

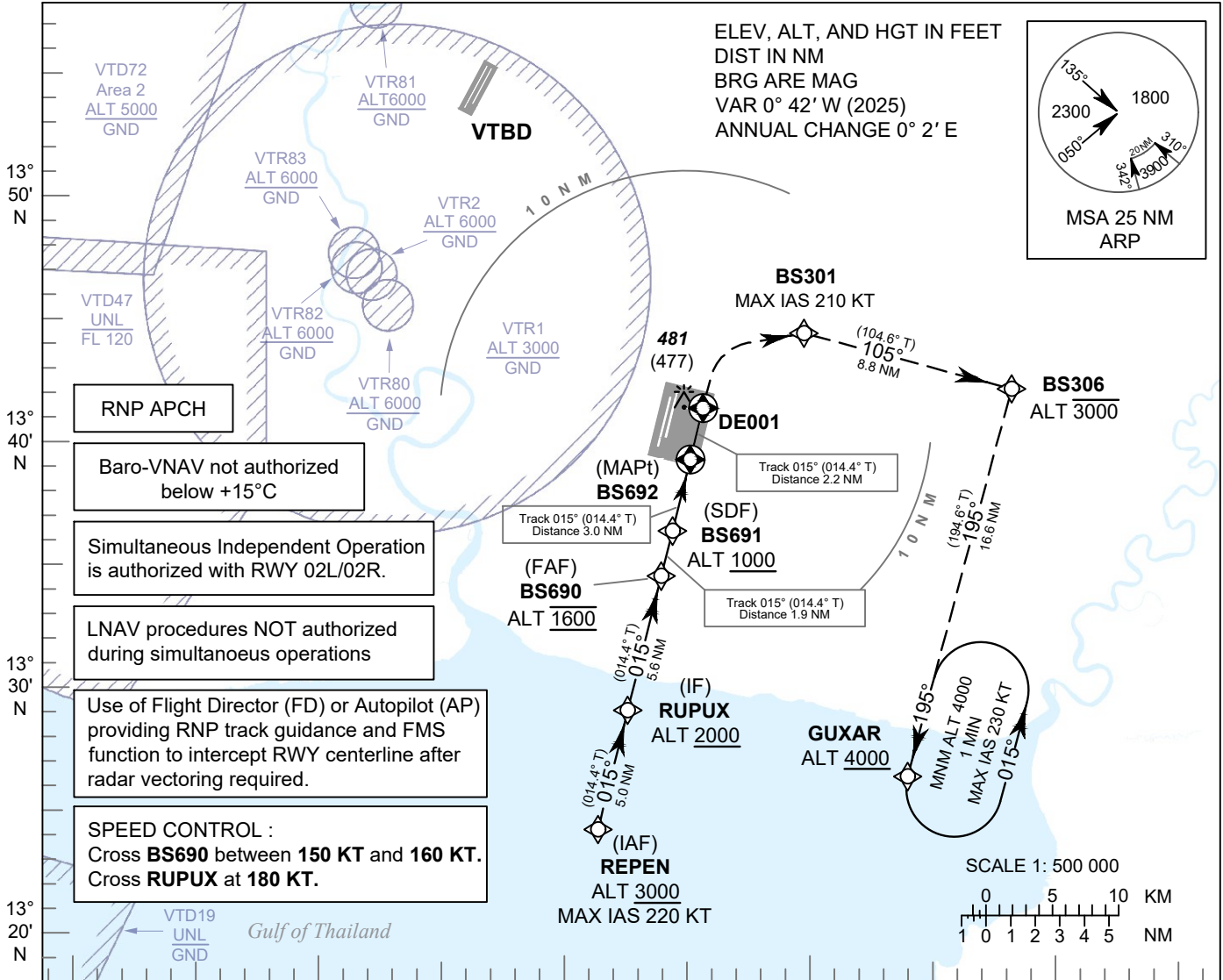
**INSTRUMENT
APPROACH
CHART - ICAO**

**AERODROME ELEV 8 FT
HEIGHTS RELATED TO
THR RWY01 - ELEV 4 FT**

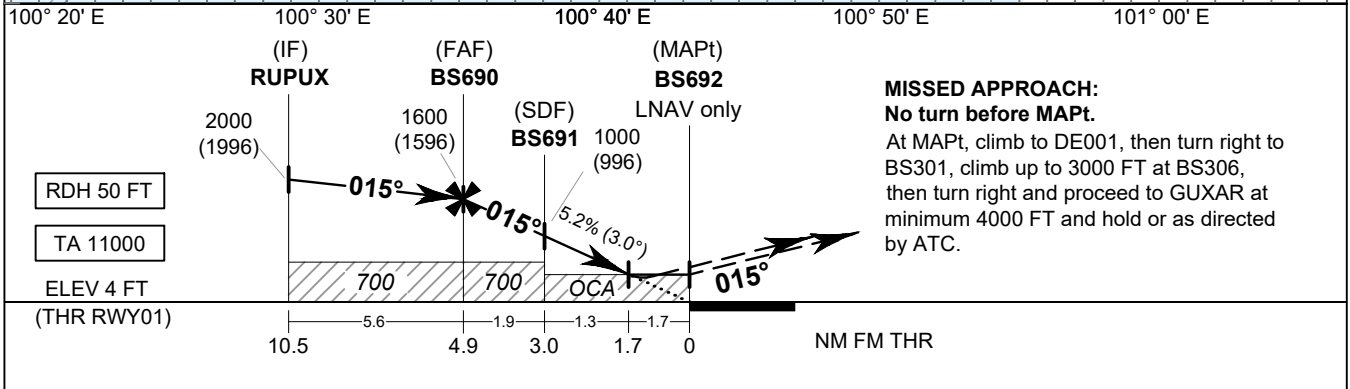
APP	: 119.1, 274.5
	: 120.3, 274.5
	: 133.4, 274.5
	: 122.35, 274.5
	: 124.35, 274.5
	: 125.2, 274.5
ARR	: 121.1, 274.5
	: 126.3, 274.5
TWR	: 118.2, 262.5
	: 119.0
ARR ATIS	: 133.6, 278.6

BANGKOK / Suvarnabhumi Intl (VTBS)

RNP RWY01



- RNP APCH
- Baro-VNAV not authorized below +15°C
- Simultaneous Independent Operation is authorized with RWY 02L/02R.
- LNAV procedures NOT authorized during simultaneous operations
- Use of Flight Director (FD) or Autopilot (AP) providing RNP track guidance and FMS function to intercept RWY centerline after radar vectoring required.
- SPEED CONTROL :
Cross **BS690** between **150 KT** and **160 KT**.
Cross **RUPUX** at **180 KT**.



OCA/H	A	B	C	D	NM to NEXT WPT	FAF	4 NM	3 NM	2 NM	1.7 NM		
LNAV / VNAV	540 (536)				Altitude (Height)	1600 (1596)	1320 (1316)	1005 (1001)	690 (686)	600 (596)		
LNAV	600 (596)				Ground speed	knot	70	90	100	120	140	160
Circling (OCH AAL)	800 (792)		900 (892)		Rate of descent FAF-MAPT 5.2%	ft/min	369	474	527	632	737	843

CHANGE: REQUIREMENT BOX. FREQ.