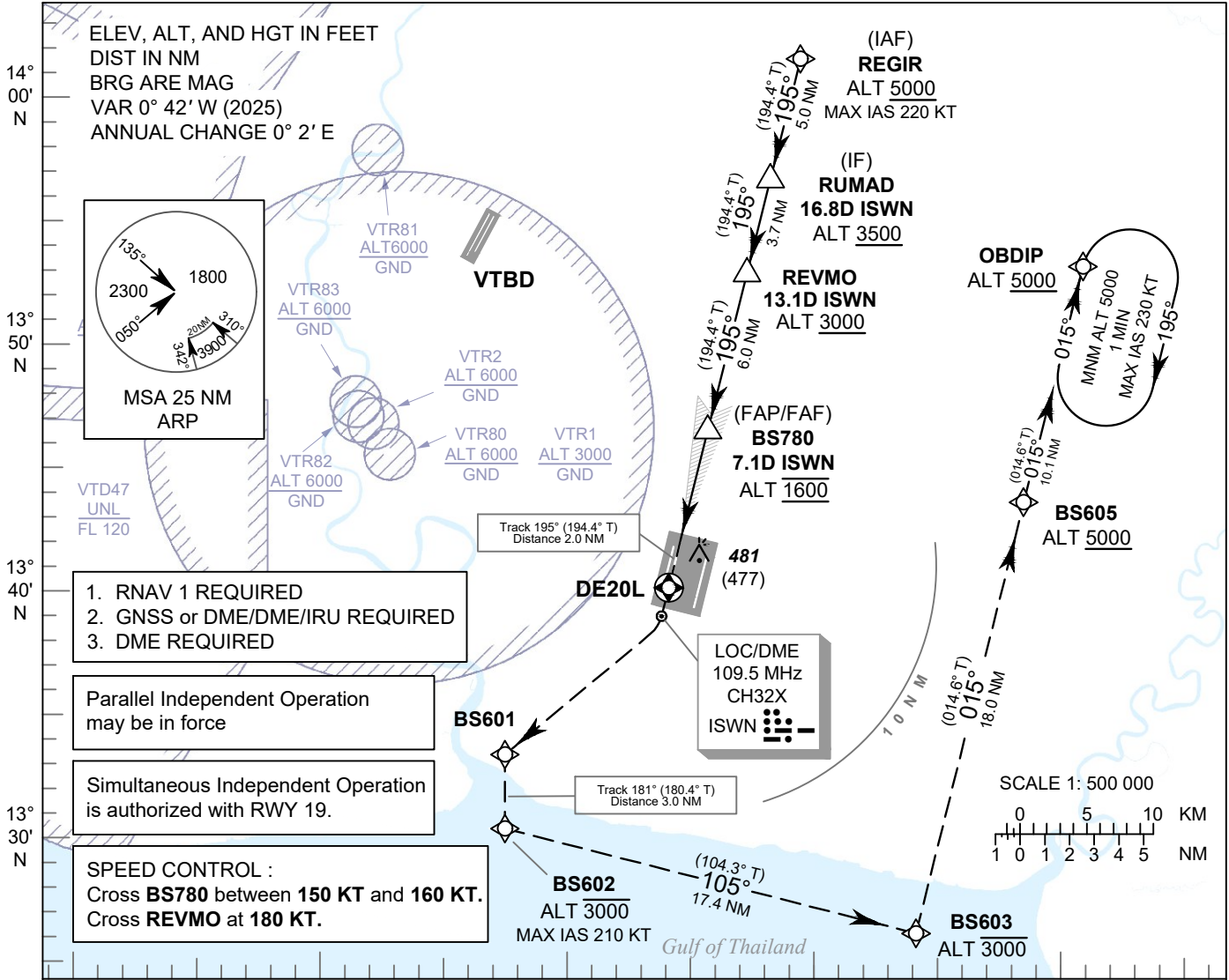


**INSTRUMENT APPROACH CHART - ICAO**      **AERODROME ELEV 8 FT**  
 HEIGHTS RELATED TO  
 THR RWY20L - ELEV 4 FT

APP	: 119.1, 274.5
	: 120.3, 274.5
	: 133.4, 274.5
	: 122.35, 274.5
	: 124.35, 274.5
	: 125.2, 274.5
ARR	: 121.1, 274.5
	: 126.3, 274.5
TWR	: 118.2, 262.5
	: 119.0
ARR ATIS	: 133.6, 278.6

**BANGKOK / Suvarnabhumi Intl (VTBS)**

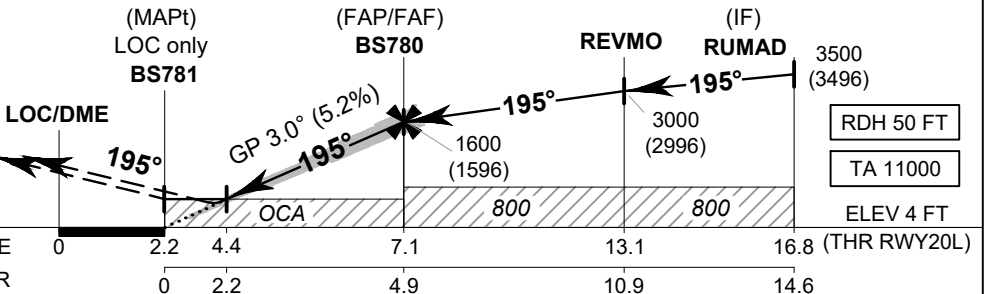
**ILS or LOC z RWY20L  
 CAT II**



**MISSED APPROACH:**

**No turn before MAPt. (for LOC only)**

At MAPt, climb to DE20L, then turn right to BS601, turn left to BS602 and climb up to 3000 FT, turn left to BS603, turn left to BS605 at minimum 5000 FT, then proceed to OBDIP at minimum 5000 FT and hold or as directed by ATC.



OCA/H	A	B	C	D	T O U G	Distance (ISWN)							
						4.4 D	5 D	6 D	7 D	FAF			
Straight-in Approach	CAT I*	290 (286)				Ground speed	knot	70	90	100	120	140	160
	CAT II**	220 (216)					Altitude (Height)	750 (746)	940 (936)	1255 (1251)	1570 (1566)	1600 (1596)	
LOC only	750 (746)				Rate of descent (5.2%)	ft/min	369	474	527	632	737	843	
Circling (OCH AAL)	800 (792)	900 (892)											

**NOTE: \*OCA (OCH) CAT I : 204 (200) FT of ILS procedures can be achieved for all aircraft categories which can commence a missed approach climb gradient of 5% (304 FT/NM) until passing ALT 1000 FT.**  
**\*\*OCA (OCH) CAT II : 130 (126) FT of ILS procedures can be achieved for all aircraft categories which can commence a missed approach climb gradient of 5% (304 FT/NM) until passing ALT 1000 FT.**

CHANGE: FREQ.