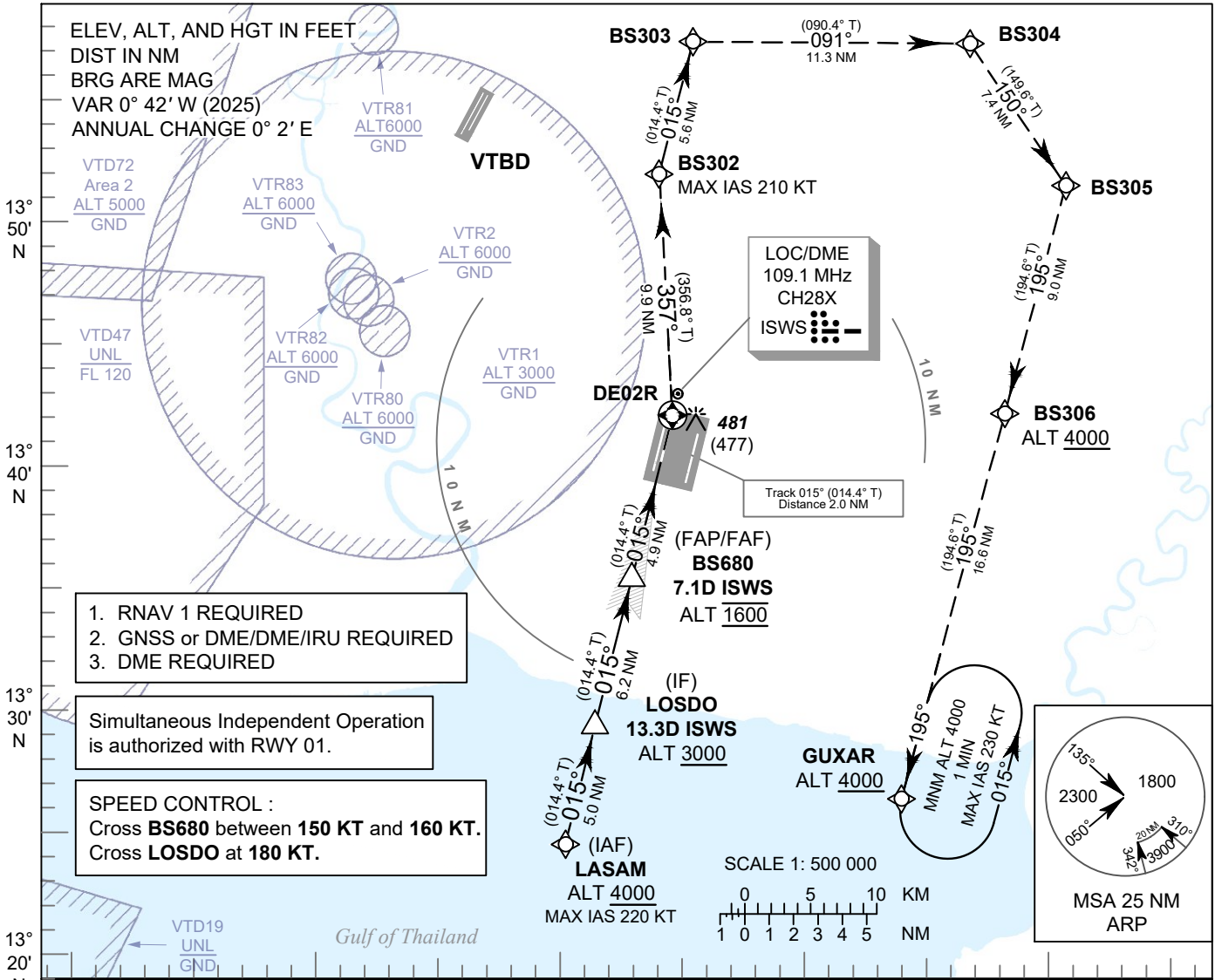


INSTRUMENT APPROACH CHART - ICAO **AERODROME ELEV 8 FT**
HEIGHTS RELATED TO THR RWY02R - ELEV 4 FT

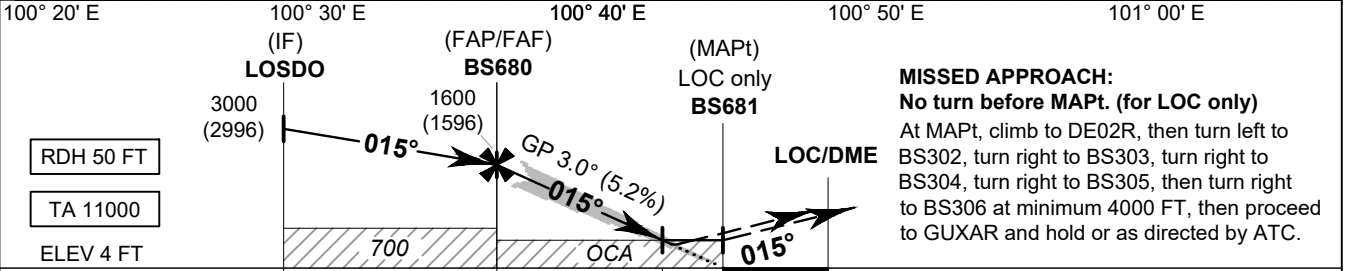
BANGKOK / Suvarnabhumi Intl (VTBS)

ILS or LOC z RWY02R CAT II

APP	: 119.1, 274.5
	: 120.3, 274.5
	: 133.4, 274.5
	: 122.35, 274.5
	: 124.35, 274.5
	: 125.2, 274.5
ARR	: 121.1, 274.5
	: 126.3, 274.5
TWR	: 118.2, 262.5
	: 119.0
ARR ATIS	: 133.6, 278.6



- 1. RNAV 1 REQUIRED
 - 2. GNSS or DME/DME/IRU REQUIRED
 - 3. DME REQUIRED
- Simultaneous Independent Operation is authorized with RWY 01.
- SPEED CONTROL :**
 Cross **BS680** between **150 KT** and **160 KT**.
 Cross **LOSDO** at **180 KT**.



(THR RWY02R)	13.3	7.1	3.7	2.2	0	DME FM LOC/DME
	11.1	4.9	1.5	0		NM FM THR

OCA/H	A	B	C	D	GS OUT	Distance (ISWS)	FAF	7 D	6 D	5 D	4 D	3.7 D	
						Straight-in Approach	CAT I*	370 (366)					1600 (1596)
	CAT II**	310 (306)											
LOC only	530 (526)					Ground speed	knot	70	90	100	120	140	160
Circling (OCH AAL)	800 (792)		900 (892)			Rate of descent (5.2%)	ft/min	369	474	527	632	737	843

NOTE: *OCA (OCH) CAT I : 250 (246) FT of ILS procedures can be achieved for all aircraft categories which can commence a missed approach climb gradient of 5% (304 FT/NM) until passing ALT 1000 FT.
 **OCA (OCH) CAT II : 150 (146) FT of ILS procedures can be achieved for all aircraft categories which can commence a missed approach climb gradient of 4% (243 FT/NM) until passing ALT 1000 FT.

CHANGE: FREQ.