

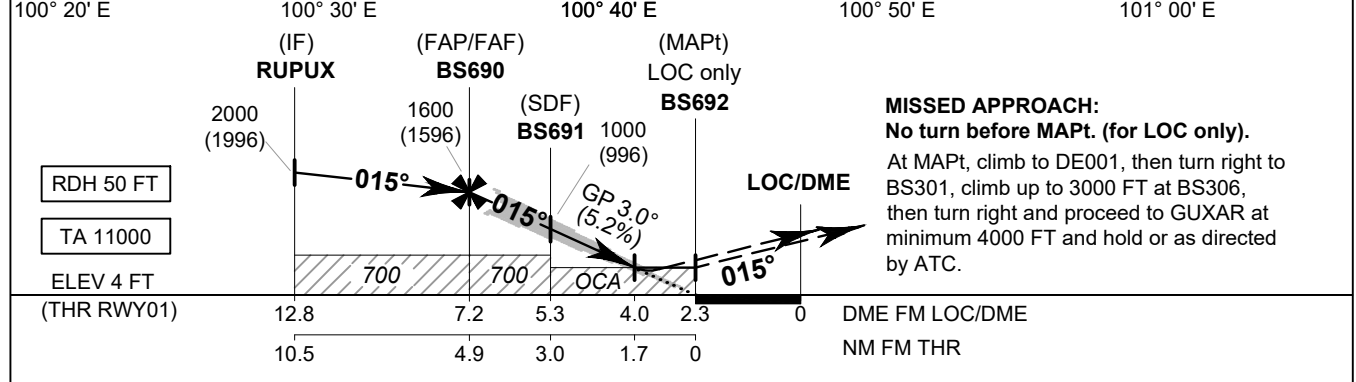
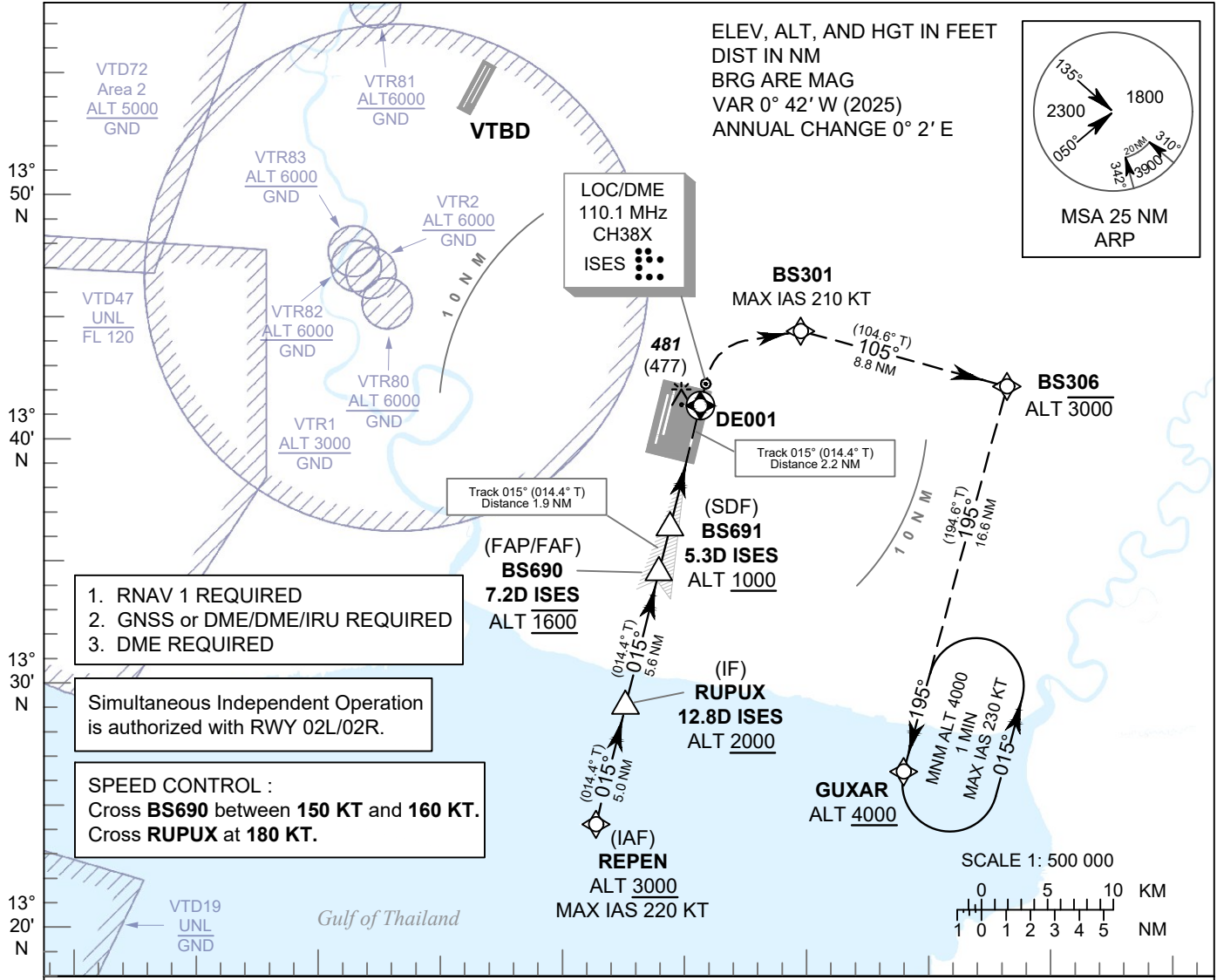
**INSTRUMENT
APPROACH
CHART - ICAO**

**AERODROME ELEV 8 FT
HEIGHTS RELATED TO
THR RWY01 - ELEV 4 FT**

APP	: 119.1, 274.5
	: 120.3, 274.5
	: 133.4, 274.5
	: 122.35, 274.5
	: 124.35, 274.5
	: 125.2, 274.5
ARR	: 121.1, 274.5
	: 126.3, 274.5
TWR	: 118.2, 262.5
	: 119.0
ARR ATIS	: 133.6, 278.6

BANGKOK / Suvarnabhumi Intl (VTBS)

**ILS or LOC z RWY01
CAT II**



OCA/H	A	B	C	D	GS OUT	Distance (ISES)	FAF	7 D	6 D	5 D	4 D		
						Straight-in Approach	CAT I	260 (256)					1600 (1596)
	CAT II	190(186)											
LOC only	590 (586)					Ground speed	knot	70	90	100	120	140	160
Circling (OCH AAL)	800 (792)	900 (892)			Rate of descent (5.2%)	ft/min	369	474	527	632	737	843	

CHANGE: FREQ.