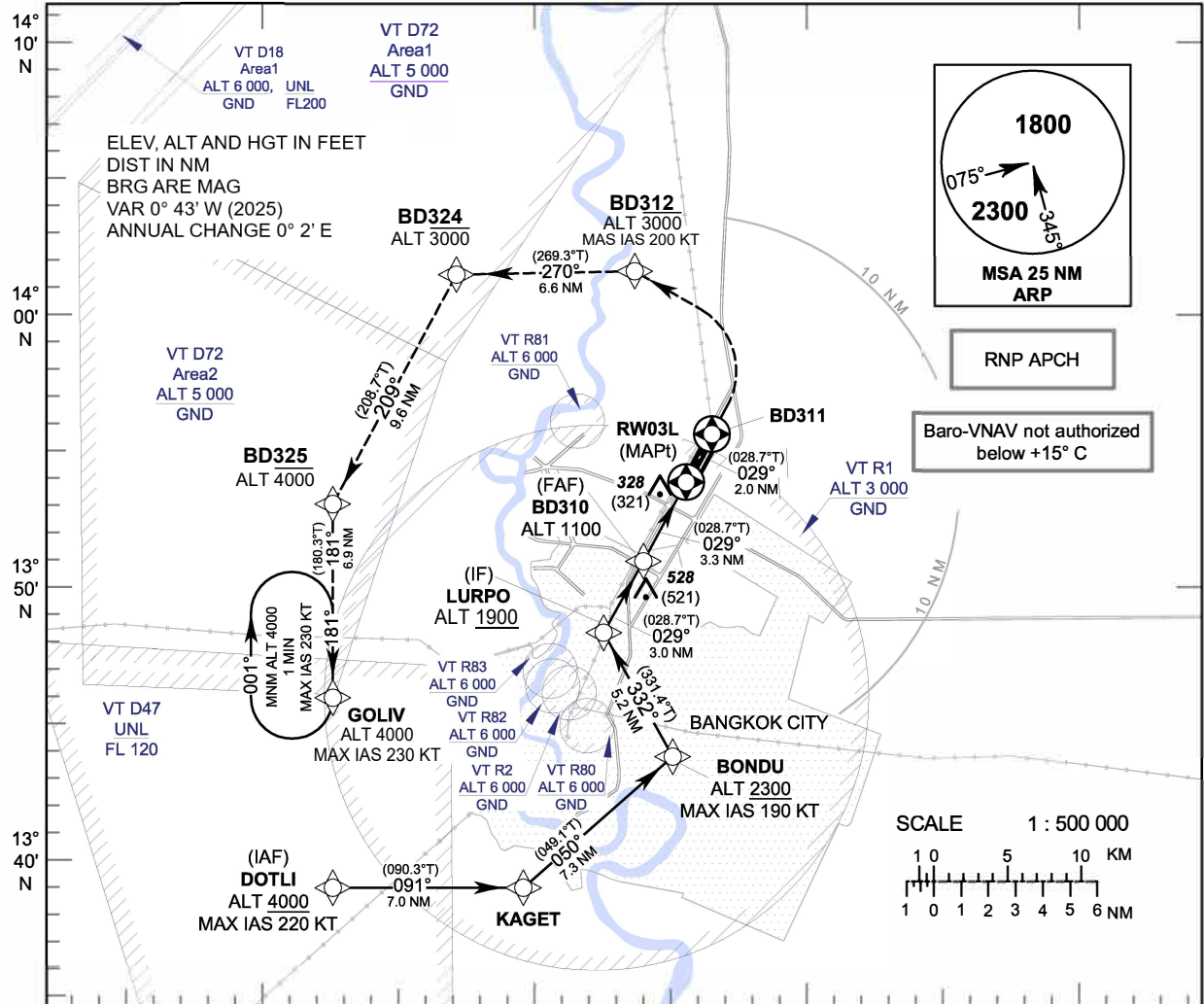


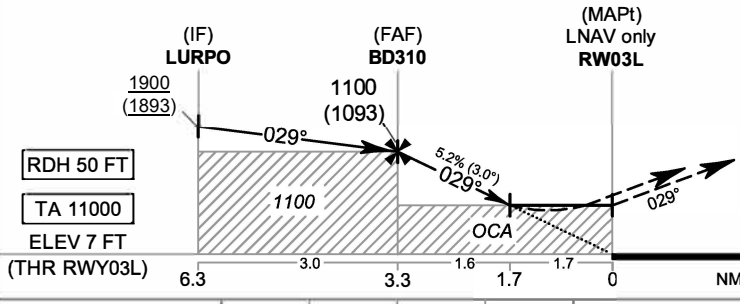
**INSTRUMENT APPROACH CHART - ICAO**      **AERODROME ELEV 9 FT**  
**HEIGHTS RELATED TO THR RWY03L - ELEV 7 FT**

APP	: 119.1, 274.5
	: 119.4, 274.5
	: 120.3, 274.5
	: 133.4, 274.5
	: 122.35, 274.5
	: 124.35, 274.5
	: 125.2, 274.5
DAR	: 133.0, 274.5
TWR	: 118.1, 236.6
ATIS	: 126.4, 344.6

**BANGKOK / Don Mueang Intl (VTBD)**  
**RNP RWY03L**



100° 20' E      100° 30' E      100° 40' E      100° 50' E



**MISSED APPROACH :**  
**No turn before MAPt.**  
**Speed restricted to MAX IAS 200 KT until BD312**  
 Climb and maintain 3000 ft. Track 029° to BD311, then turn left direct to BD312, then to BD324. At BD324 proceed to BD325 climbing up to 4000ft, then to GOLIV and hold or as directed by ATC.

OCA/H	A	B	C	D	NM to NEXT WPT	FAF	2 NM	1.7 NM					
LNAV/VNAV	490 (483)				Altitude (Height)	1100 (1093)	690 (683)	590 (583)					
LNAV	590 (583)				Ground speed	knot	70	90					
Circling (OCH AAL)	800 (791)				1100 (1091)	Rate of descent FAF-MAPt (5.2%)	ft/min	369	474	527	632	737	843
							100	120	140	160			

CHANGE: MAG VAR. FREQ.