

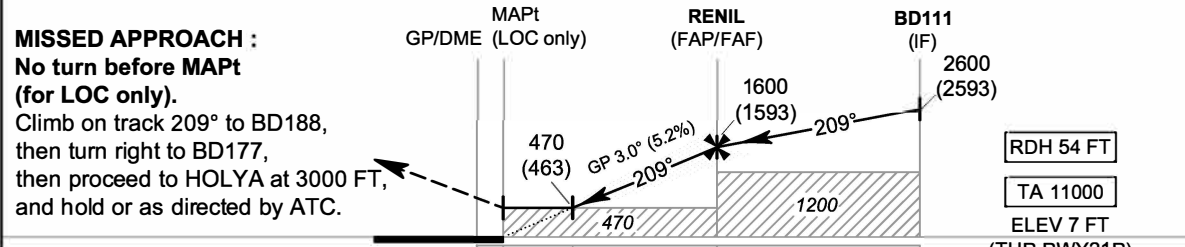
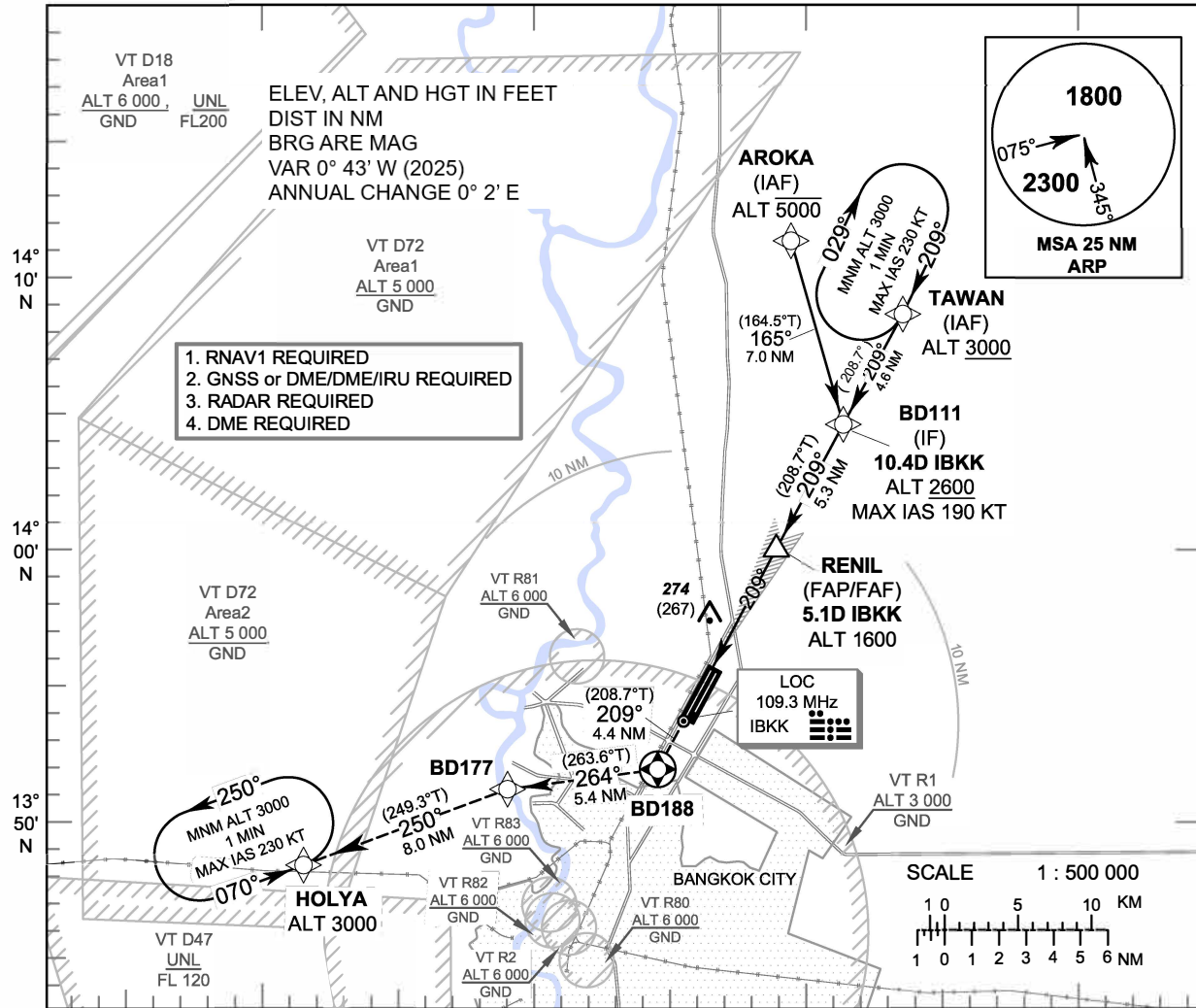
**INSTRUMENT APPROACH CHART - ICAO**      **AERODROME ELEV 9 FT**  
**HEIGHTS RELATED TO THR RWY21R - ELEV 7 FT**

APP	: 119.1, 274.5
	: 119.4, 274.5
	: 120.3, 274.5
	: 133.4, 274.5
	: 122.35, 274.5
	: 124.35, 274.5
	: 125.2, 274.5
DAR	: 133.0, 274.5
TWR	: 118.1, 236.6
ATIS	: 126.4, 344.6

**BANGKOK / Don Mueang Intl (VTBD)**

**ILS or LOC z RWY21R**

**CAT II**



DME FM GP/DME	0	0.2	1.5	5.1	10.4
NM FM THR	0	1.3	4.9	10.2	

OCA/H	A	B	C	D	GS OUT	Distance (IBKK)	1.5 D	2 D	3 D	4 D	5 D	FAF	
						Straight - in Approach	CAT I	220 (213)					Altitude (Height)
LOC only	470 (463)					Ground speed	knot	70	90	100	120	140	160
Circling (OCH AAL)	800 (791)				1100 (1091)	Rate of descent (5.2%)	(ft/min)	369	474	527	632	737	843

CHANGE: MAG VAR. FREQ.