

**STANDARD DEPARTURE CHART-  
INSTRUMENT (SID) - ICAO**

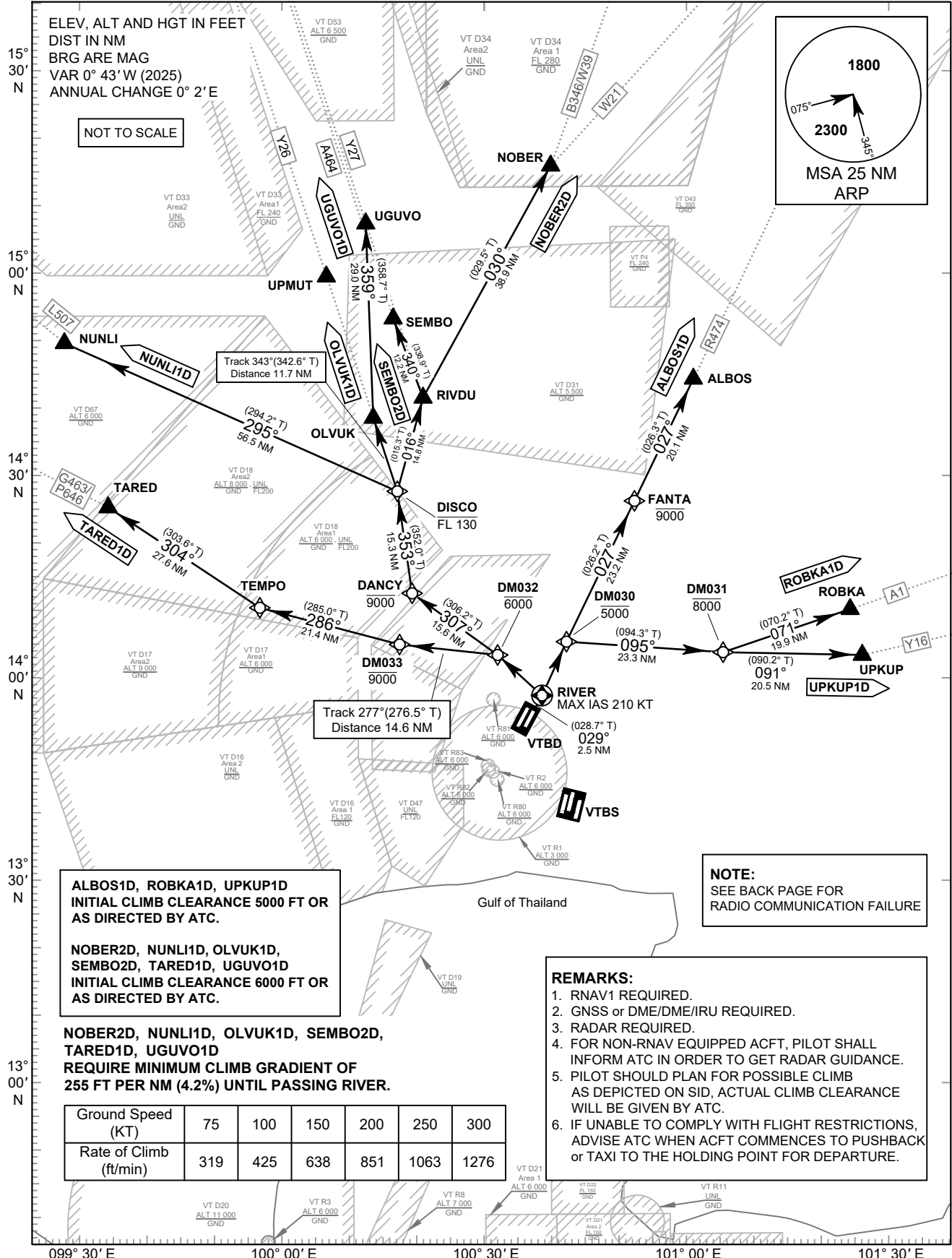
TRANSITION ALTITUDE  
11000 FT

SPEED RESTRICTION  
MAX IAS 250 KT AT OR  
BELOW ALT 10000 FT  
UNLESS OTHERWISE  
AUTHORIZED BY ATC.

APP : 119.1, 274.5  
: 119.4, 274.5  
: 120.3, 274.5  
: 133.4, 274.5  
: 122.35, 274.5  
: 124.35, 274.5  
: 125.2, 274.5  
DAR : 133.0, 274.5  
TWR : 118.1, 236.6  
DEP ATIS : 118.55

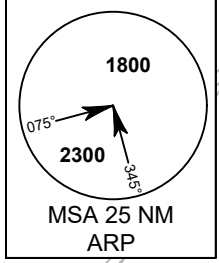
**BANGKOK/Don Mueang Intl (VTBD)  
RNAV RWY03R**

ALBOS1D NOBER2D NUNLI1D  
OLVUK1D ROBKA1D SEMBO2D  
TARED1D UPKUP1D UGUVO1D



ELEV. ALT AND HGT IN FEET  
DIST IN NM  
BRG ARE MAG  
VAR 0° 43' W (2025)  
ANNUAL CHANGE 0° 2' E

NOT TO SCALE



ALBOS1D, ROBKA1D, UPKUP1D  
INITIAL CLIMB CLEARANCE 5000 FT OR  
AS DIRECTED BY ATC.

NOBER2D, NUNLI1D, OLVUK1D,  
SEMBO2D, TARED1D, UGUVO1D  
INITIAL CLIMB CLEARANCE 6000 FT OR  
AS DIRECTED BY ATC.

NOBER2D, NUNLI1D, OLVUK1D, SEMBO2D,  
TARED1D, UGUVO1D  
REQUIRE MINIMUM CLIMB GRADIENT OF  
255 FT PER NM (4.2%) UNTIL PASSING RIVER.

Ground Speed (KT)	75	100	150	200	250	300
Rate of Climb (ft/min)	319	425	638	851	1063	1276

**NOTE:**  
SEE BACK PAGE FOR  
RADIO COMMUNICATION FAILURE

**REMARKS:**

1. RNAV1 REQUIRED.
2. GNSS or DME/DME/IRU REQUIRED.
3. RADAR REQUIRED.
4. FOR NON-RNAV EQUIPPED ACFT, PILOT SHALL INFORM ATC IN ORDER TO GET RADAR GUIDANCE.
5. PILOT SHOULD PLAN FOR POSSIBLE CLIMB AS DEPICTED ON SID, ACTUAL CLIMB CLEARANCE WILL BE GIVEN BY ATC.
6. IF UNABLE TO COMPLY WITH FLIGHT RESTRICTIONS, ADVISE ATC WHEN ACFT COMMENCES TO PUSHBACK or TAXI TO THE HOLDING POINT FOR DEPARTURE.

CHANGE : MAG VAR. FREQ.