

**STANDARD DEPARTURE CHART-
INSTRUMENT (SID) - ICAO**

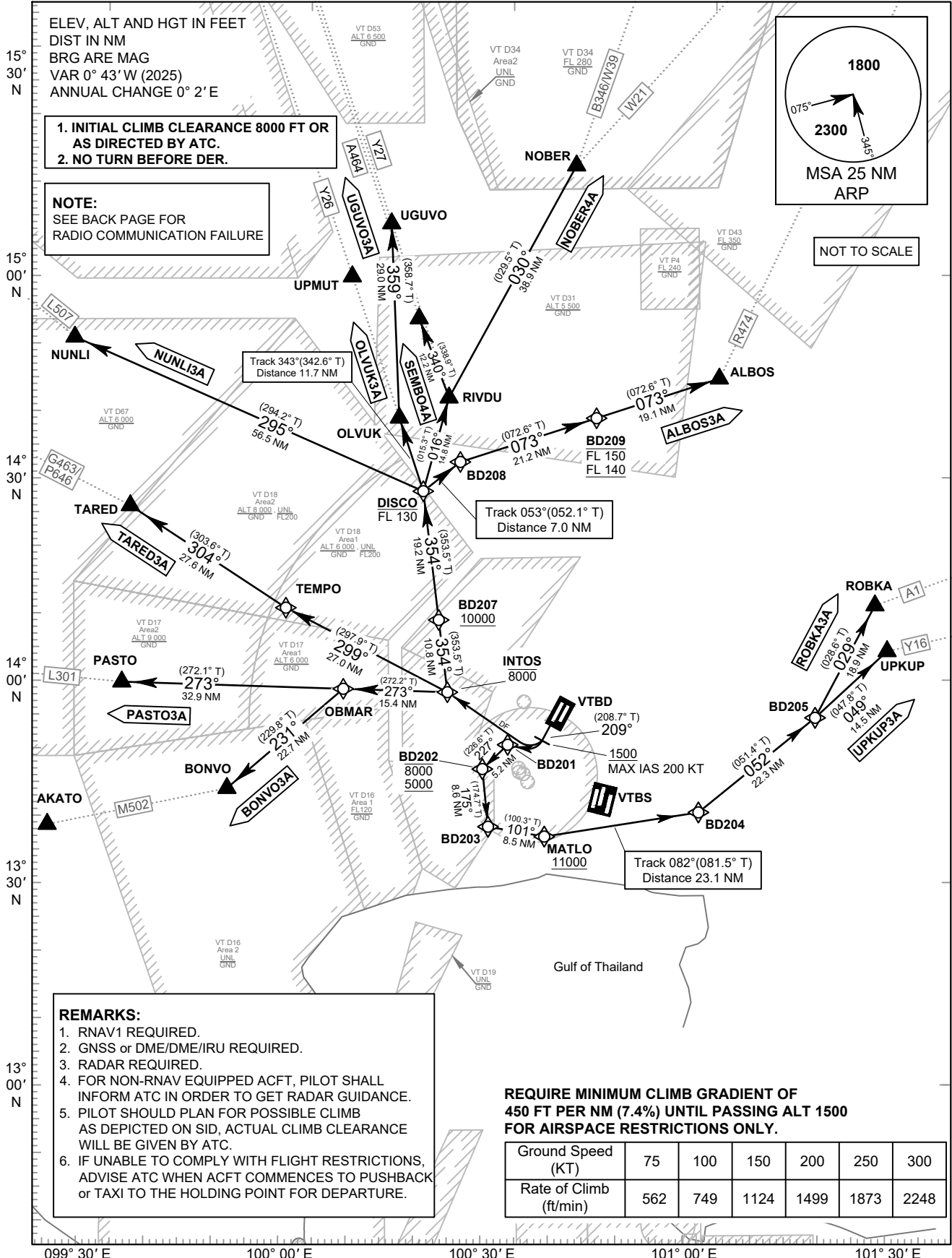
TRANSITION ALTITUDE
11000 FT

SPEED RESTRICTION
MAX IAS 250 KT AT OR
BELOW ALT 10000 FT
UNLESS OTHERWISE
AUTHORIZED BY ATC.

APP : 119.1, 274.5
: 119.4, 274.5
: 120.3, 274.5
: 133.4, 274.5
: 122.35, 274.5
: 124.35, 274.5
: 125.2, 274.5
DAR : 133.0, 274.5
TWR : 118.1, 236.6
DEP ATIS : 118.55

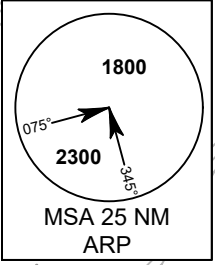
**BANGKOK/Don Mueang Intl (VTBD)
RNAV RWY21R**

ALBOS3A BONVO3A NOBER4A
NUNLI3A OLVUK3A PASTO3A
ROBKA3A SEMBO4A TARED3A
UPKUP3A UGUVO3A



1. INITIAL CLIMB CLEARANCE 8000 FT OR
AS DIRECTED BY ATC.
2. NO TURN BEFORE DER.

NOTE:
SEE BACK PAGE FOR
RADIO COMMUNICATION FAILURE



NOT TO SCALE

REMARKS:

1. RNAV1 REQUIRED.
2. GNSS or DME/DME/IRU REQUIRED.
3. RADAR REQUIRED.
4. FOR NON-RNAV EQUIPPED ACFT, PILOT SHALL INFORM ATC IN ORDER TO GET RADAR GUIDANCE.
5. PILOT SHOULD PLAN FOR POSSIBLE CLIMB AS DEPICTED ON SID, ACTUAL CLIMB CLEARANCE WILL BE GIVEN BY ATC.
6. IF UNABLE TO COMPLY WITH FLIGHT RESTRICTIONS, ADVISE ATC WHEN ACFT COMMENCES TO PUSHBACK or TAXI TO THE HOLDING POINT FOR DEPARTURE.

**REQUIRE MINIMUM CLIMB GRADIENT OF
450 FT PER NM (7.4%) UNTIL PASSING ALT 1500
FOR AIRSPACE RESTRICTIONS ONLY.**

Ground Speed (KT)	75	100	150	200	250	300
Rate of Climb (ft/min)	562	749	1124	1499	1873	2248

CHANGE : MAG VAR. FREQ.