

**STANDARD DEPARTURE CHART-
INSTRUMENT (SID) - ICAO**

TRANSITION ALTITUDE 11000 FT
SPEED RESTRICTION MAX IAS 250 KT AT OR BELOW ALT 10000 FT UNLESS OTHERWISE AUTHORIZED BY ATC.

APP	: 119.1, 274.5
	: 119.4, 274.5
	: 120.3, 274.5
	: 133.4, 274.5
	: 122.35, 274.5
	: 124.35, 274.5
	: 125.2, 274.5
DAR	: 133.0, 274.5
TWR	: 118.1, 236.6
DEP ATIS	: 118.55

**BANGKOK/Don Mueang Intl (VTBD)
RNAV RWY21L**

DOSBU3C GORSI3C HHN3C
KASNI3C KIGOB3C REGOS3C
RYN3C SABIS3C UKERA3C

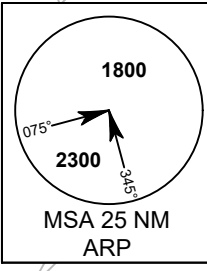
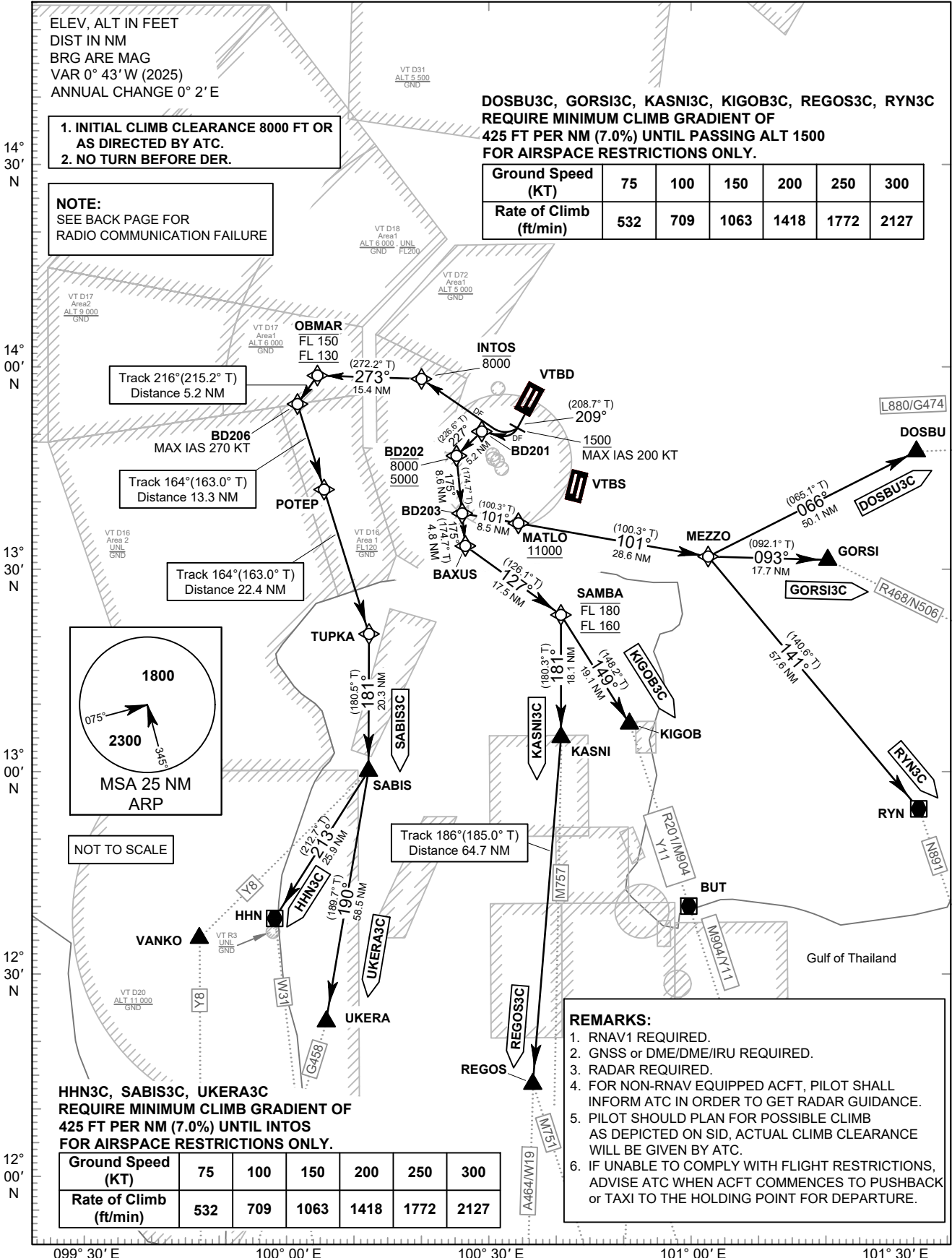
ELEV. ALT IN FEET
DIST IN NM
BRG ARE MAG
VAR 0° 43' W (2025)
ANNUAL CHANGE 0° 2' E

- INITIAL CLIMB CLEARANCE 8000 FT OR AS DIRECTED BY ATC.
- NO TURN BEFORE DER.

NOTE:
SEE BACK PAGE FOR
RADIO COMMUNICATION FAILURE

**DOSBU3C, GORSI3C, KASNI3C, KIGOB3C, REGOS3C, RYN3C
REQUIRE MINIMUM CLIMB GRADIENT OF
425 FT PER NM (7.0%) UNTIL PASSING ALT 1500
FOR AIRSPACE RESTRICTIONS ONLY.**

Ground Speed (KT)	75	100	150	200	250	300
Rate of Climb (ft/min)	532	709	1063	1418	1772	2127



NOT TO SCALE

**HHN3C, SABIS3C, UKERA3C
REQUIRE MINIMUM CLIMB GRADIENT OF
425 FT PER NM (7.0%) UNTIL INTOS
FOR AIRSPACE RESTRICTIONS ONLY.**

Ground Speed (KT)	75	100	150	200	250	300
Rate of Climb (ft/min)	532	709	1063	1418	1772	2127

- REMARKS:**
- RNAV1 REQUIRED.
 - GNSS or DME/DME/IRU REQUIRED.
 - RADAR REQUIRED.
 - FOR NON-RNAV EQUIPPED ACFT, PILOT SHALL INFORM ATC IN ORDER TO GET RADAR GUIDANCE.
 - PILOT SHOULD PLAN FOR POSSIBLE CLIMB AS DEPICTED ON SID, ACTUAL CLIMB CLEARANCE WILL BE GIVEN BY ATC.
 - IF UNABLE TO COMPLY WITH FLIGHT RESTRICTIONS, ADVISE ATC WHEN ACFT COMMENCES TO PUSHBACK or TAXI TO THE HOLDING POINT FOR DEPARTURE.

CHANGE: MAG VAR. FREQ.