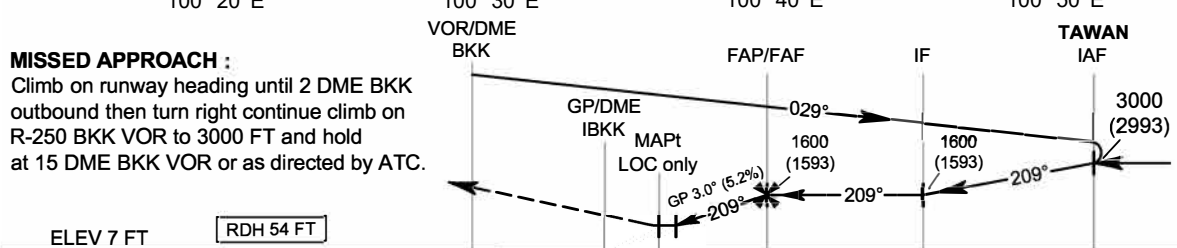
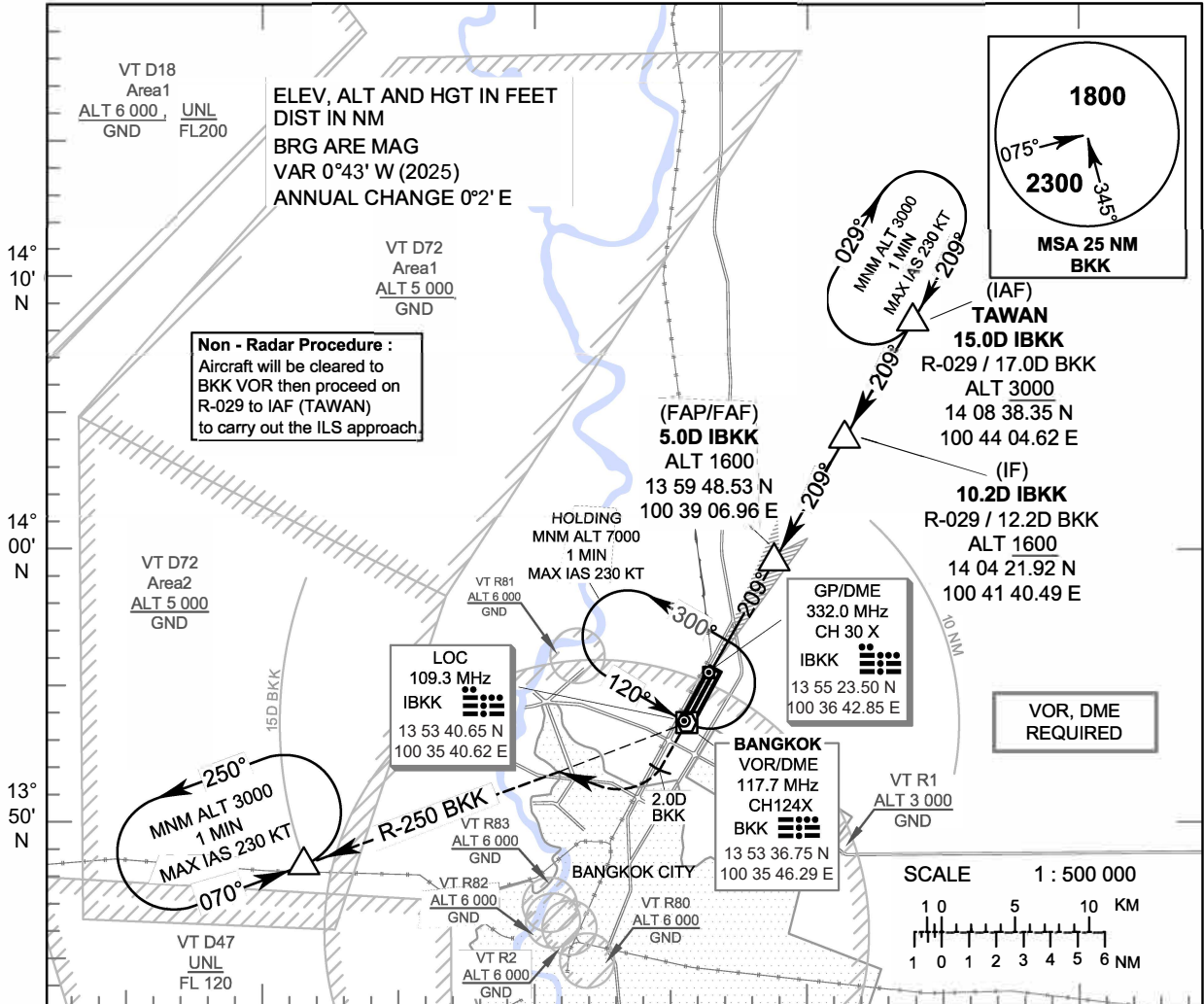


**INSTRUMENT APPROACH CHART - ICAO**      **AERODROME ELEV 9 FT**  
 HEIGHTS RELATED TO  
 THR RWY21R - ELEV 7 FT

APP	: 119.1, 274.5
	: 119.4, 274.5
	: 120.3, 274.5
	: 133.4, 274.5
	: 122.35, 274.5
	: 124.35, 274.5
	: 125.2, 274.5
DAR	: 133.0, 274.5
TWR	: 118.1, 236.6
ATIS	: 126.4, 344.6

**BANGKOK / Don Mueang Intl (VTBD)**  
 ILS or LOC y RWY21R  
 CAT II



CHANGE: MAG VAR: FREQ.

OCA/H		A	B	C	D	Distance (IBKK)	1.5 DME	2 DME	3 DME	4 DME		
Straight-in Approach	CAT I	220 (213)				Altitude (Height)	470 (463)	630 (623)	950 (943)	1265 (1258)		
	CAT II	120 (113)	150 (143)			Ground speed	knot	100	120	140	160	180
LOC only		470 (463)				FAF-MAPt 3.8 NM (min:s)	2:17	1:54	1:38	1:26	1:16	1:08
Circling (OCH AAL)		800 (791)	1100 (1091)			Rate of descent (ft/min)	530	637	743	849	955	1061