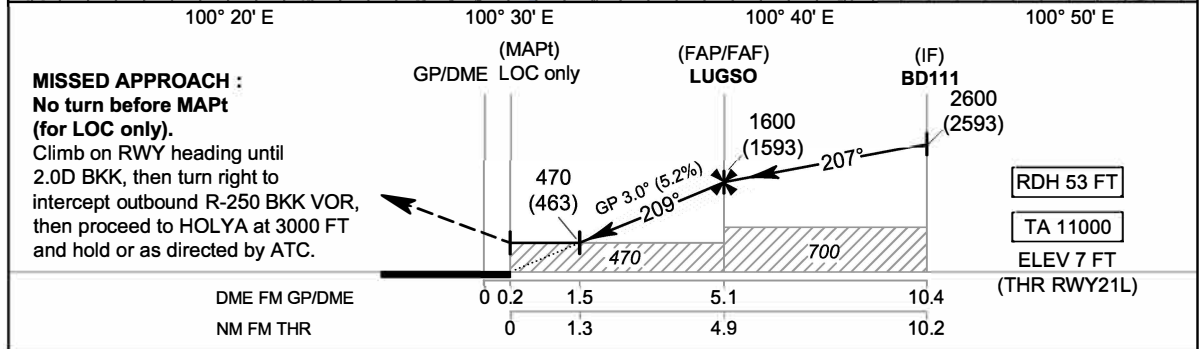
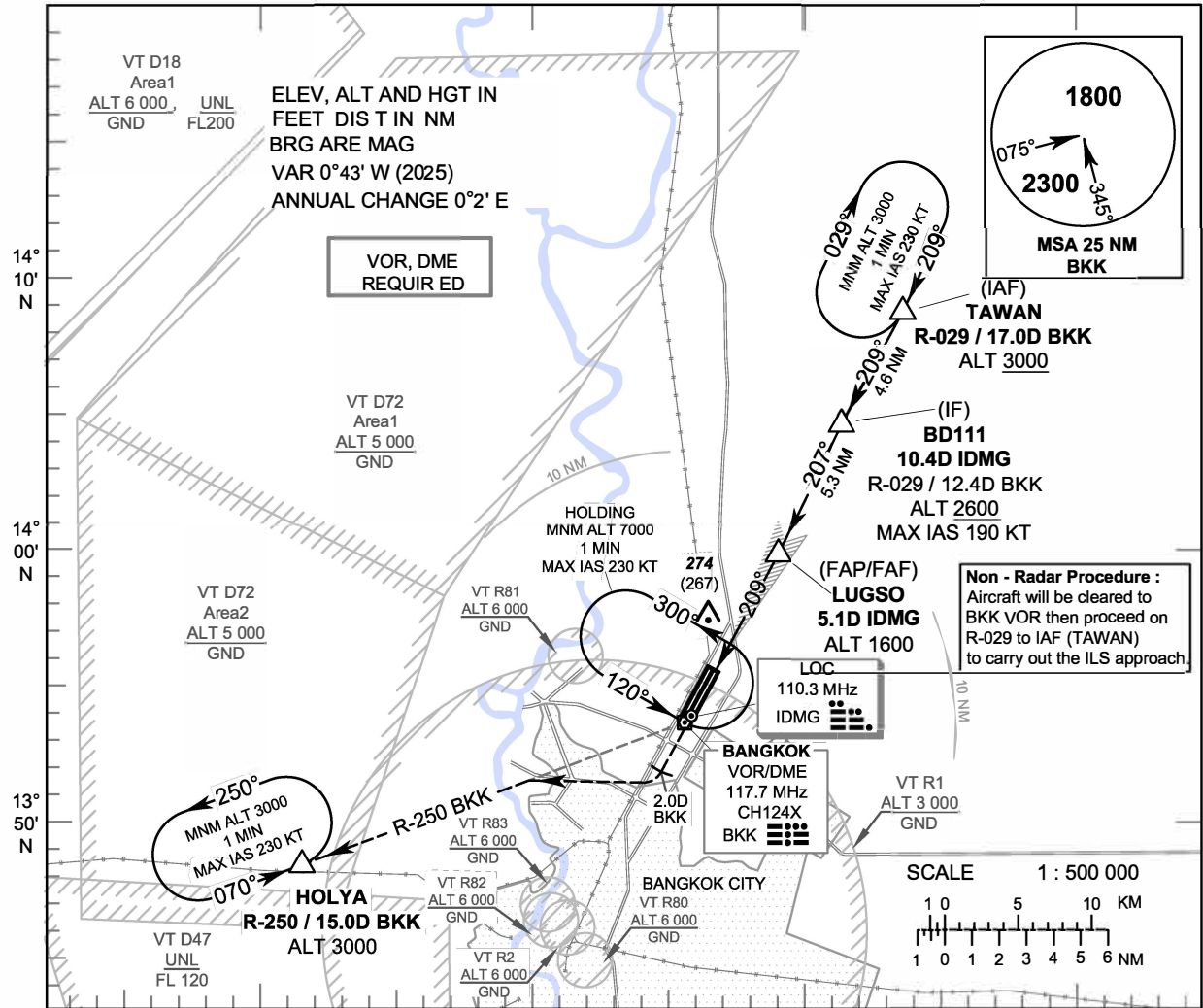


INSTRUMENT APPROACH CHART - ICAO AERODROME ELEV 9 FT
 HEIGHTS RELATED TO THR RWY21L - ELEV 7 FT

APP	: 119.1,274.5
	: 119.4,274.5
	: 120.3,274.5
	: 133.4, 274.5
	: 122.35, 274.5
	: 124.35, 274.5
	: 125.2,274.5
DAR	: 133.0,274.5
TWR	: 118.1, 236.6
ATIS	: 126.4,344.6

BANGKOK / Don Mueang Intl (VTBD)
 ILS or LOC y RWY21L



MISSED APPROACH :
No turn before MAPt (for LOC only).
 Climb on RWY heading until 2.0D BKK, then turn right to intercept outbound R-250 BKK VOR, then proceed to HOLYA at 3000 FT and hold or as directed by ATC.

DME FM GP/DME	0	0.2	1.5	5.1	10.4
NM FM THR	0	0.2	1.3	4.9	10.2

OCA/H	A	B	C	D	GS OUT	Distance (IDMG)	1.5 D	2 D	3 D	4 D	5 D	FAF	
						Altitude (Height)	470 (463)	625 (618)	940 (933)	1260 (1253)	1575 (1568)	1600 (1593)	
LOC only	470 (463)					Ground speed	knot	70	90	100	120	140	160
Circling (OCH AAL)	800 (791)				1100 (1091)	Rate of descent (5.2%)	ft/min	369	474	527	632	737	843

CHANGE: MAG VAR. FREQ.