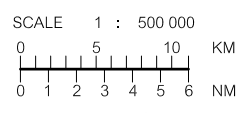
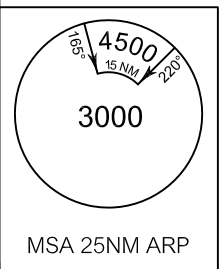
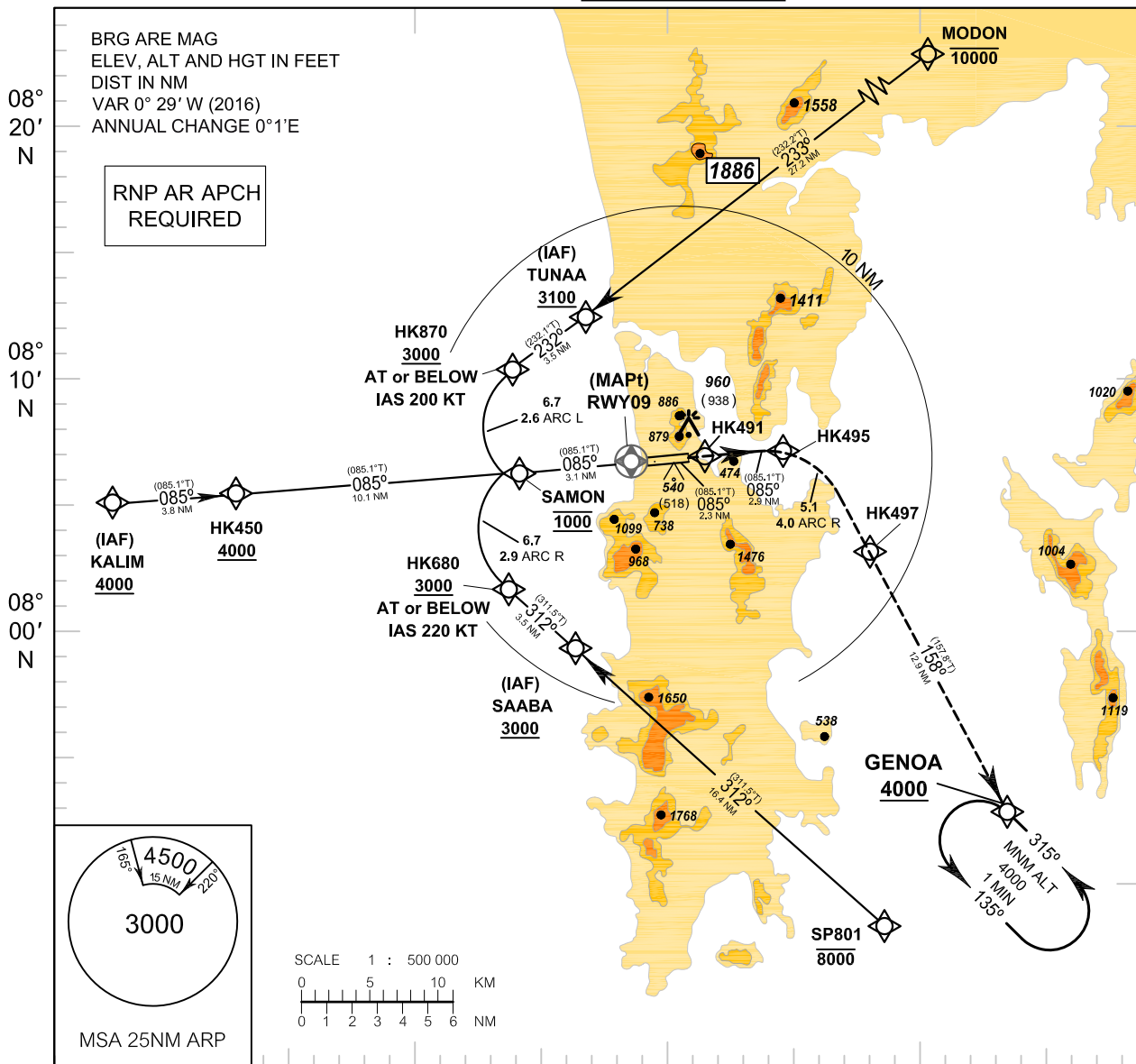


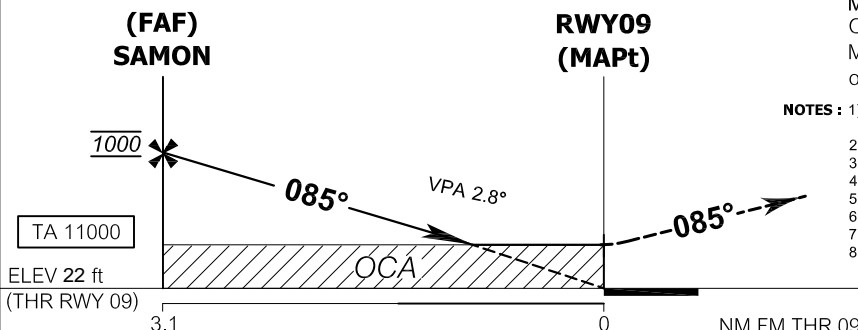
**INSTRUMENT AERODROME ELEV 84 FT**  
**APPROACH HEIGHTS RELATED TO**  
**CHART - ICAO THR RWY09 - ELEV 22 FT**

APP : 124.7, 284.0  
 ARR : 120.7  
 TWR : 118.1, 236.6  
 GND : 121.9  
 ATIS : 128.0

**PHUKET / Phuket Intl (VTSP)**  
**RNP y RWY09 (AR)**



98° 10' E                      98° 20' E                      98° 30' E



**MISSED APPROACH :**  
 Climb to 4000 ft via the RNAV(RNP)  
 Missed Approach track to GENOA  
 or as directed by ATC.

- NOTES :**
- 1) Approach not authorized when airport temperature below 20°C.
  - 2) RF Required.
  - 3) VTSP altimeter setting required.
  - 4) GNSS Required.
  - 5) PAPI and vertical path angle not coincident.
  - 6) Procedure requires RNP 0.30 from IAFs to RWY.
  - 7) Procedure requires RNP 0.40 from RWY to HK491.
  - 8) TOGA to Nav required.

OCA/H	C	D
RNP 0.30	650 (628)	

REMARK: 1. CIRCLING AND ALTERNATE - N/A  
 2. AREA OUTSIDE IMAGE IS NOT TO SCALE

CHANGE: AERODROME ELEV. THR RWY 09 ELEV.