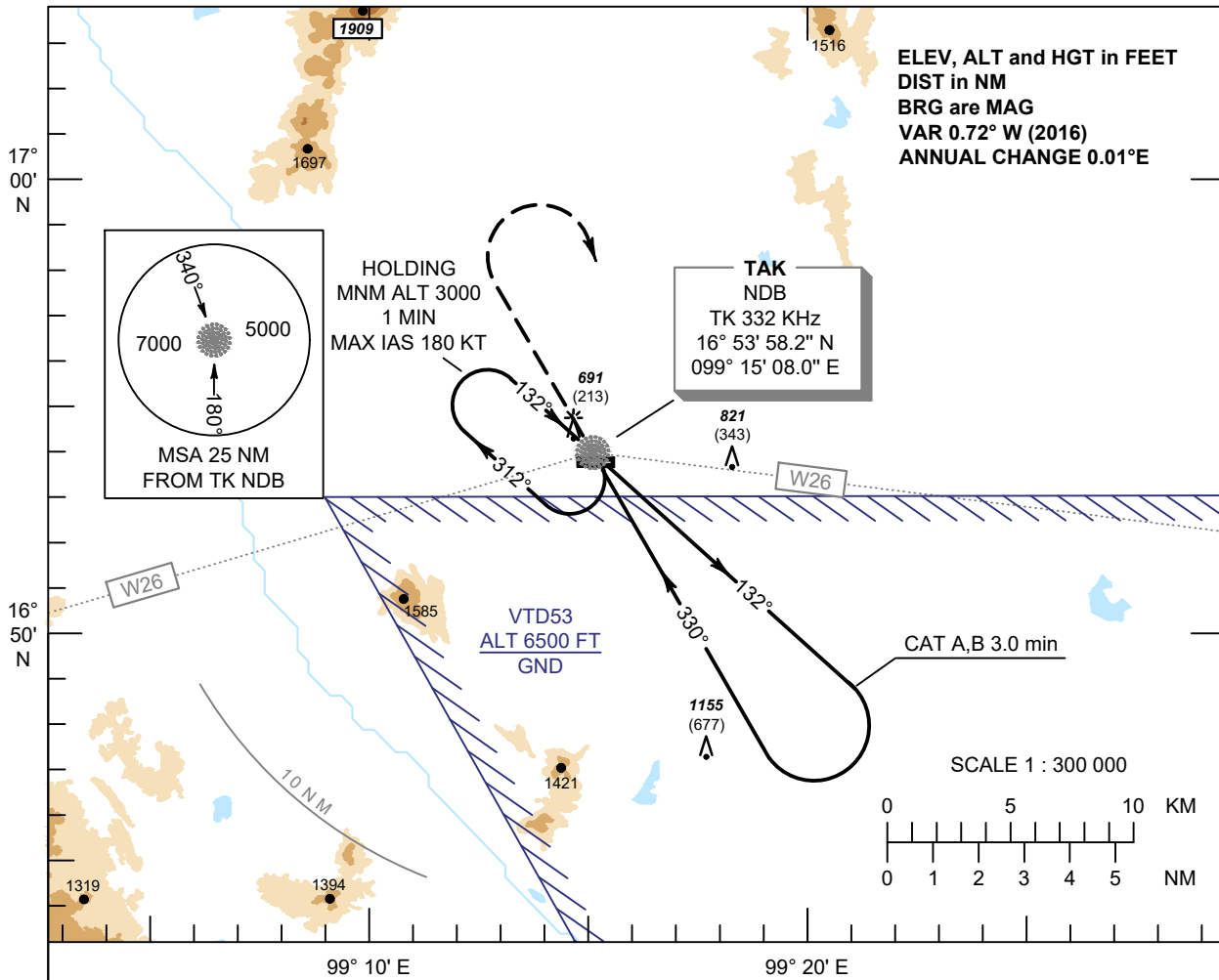


**INSTRUMENT
APPROACH
CHART - ICAO**

**AERODROME ELEV 478 FT
HEIGHT RELATED TO
AERODROME ELEV**

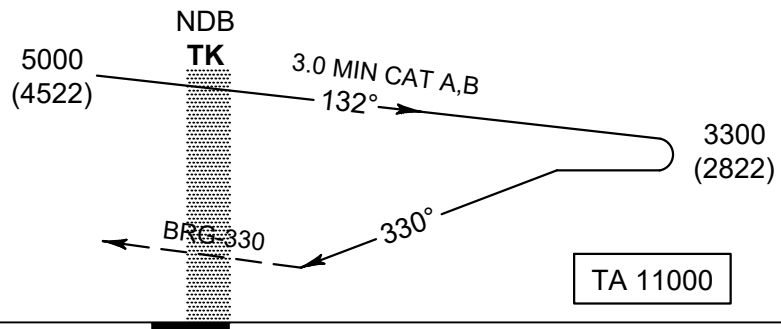
APP : 126.0
TWR : 118.8, 236.6

**TAK / Tak
NDB a**



MISSED APPROACH :

At TK NDB climb on BRG-330 to 2000 ft, then turn right and continue climb to TK NDB at or above 3000 FT, then continue climb in the holding pattern to 5000 ft and hold or as directed by ATC.



CHANGE: MISSED APPROACH PROCEDURE.

OCA/H	A	B
Straight - in approach	Not Authorized	
Circling (OCH AAL)	1600 (1122)	1800 (1322)