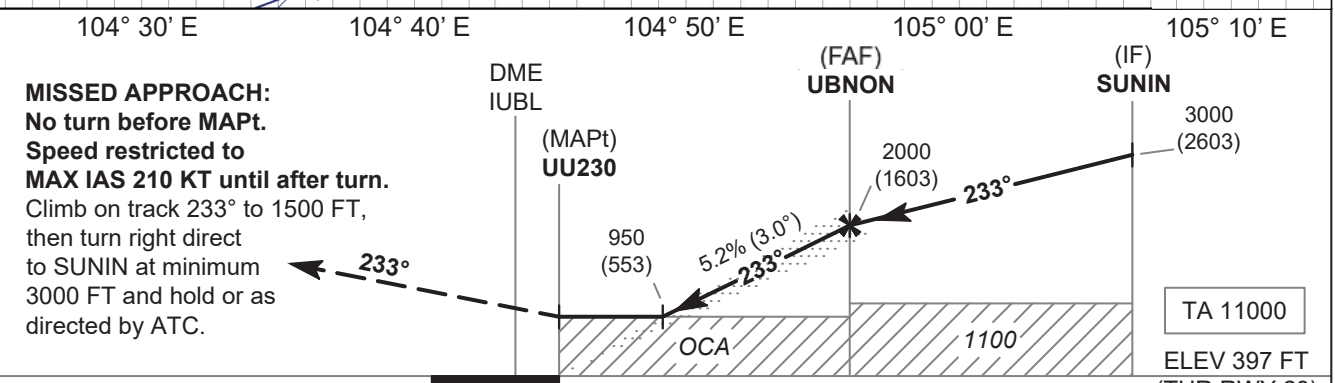
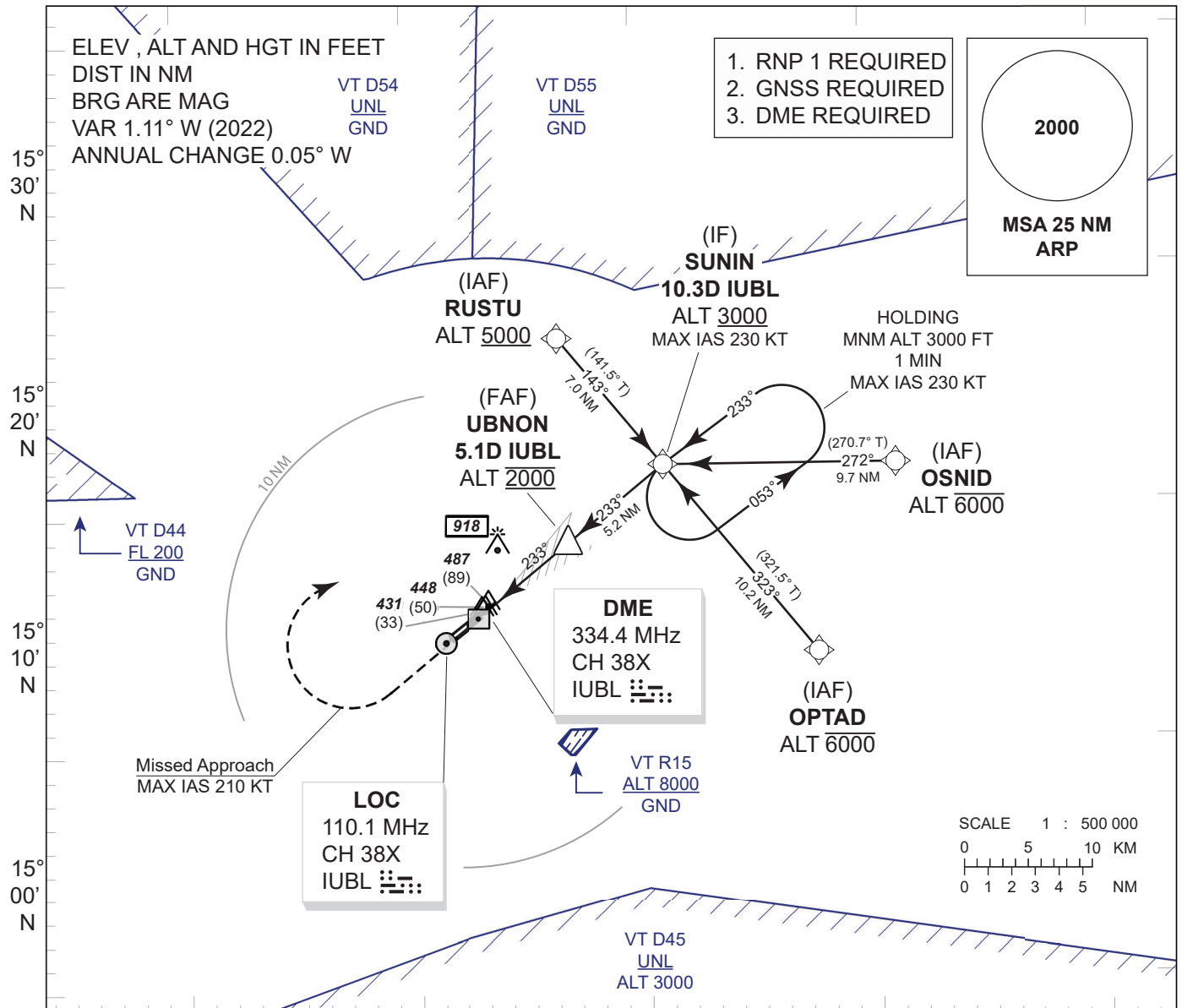


**INSTRUMENT
APPROACH
CHART - ICAO**

**AERODROME ELEV 411 FT
HEIGHT RELATED TO
THR RWY23 - ELEV 397 FT**

APP : 123.5, 257.8
TWR : 119.9, 274.5
GND : 121.9, 275.8
ATIS : 128.2

**UBON RATCHATHANI /
Ubon Ratchathani (VTUU)
LOC z RWY23**



MISSED APPROACH:	DME IUBL	(FAF) UBNON	(IF) SUNIN		
No turn before MAPt.	(MAPt) UU230	2000 (1603)	3000 (2603)		
Speed restricted to MAX IAS 210 KT until after turn.	950 (553)	233°			
Climb on track 233° to 1500 FT, then turn right direct to SUNIN at minimum 3000 FT and hold or as directed by ATC.	5.2% (3.0°)				
	OCA	1100	TA 11000		
			ELEV 397 FT (THR RWY 23)		
DME FM IUBL	0	0.2	1.8	5.1	10.3
NM FM THR	0	1.6	4.9	10.1	

CHANGE: FAF.	OCA/H	A	B	C	D	Distance (IUBL)	1.8 D	2 D	3 D	4 D	FAF		
	Straight - in Approach	950 (553)					Altitude (Height)	950 (553)	1015 (618)	1330 (933)	1645 (1248)	2000 (1603)	
							Ground speed	knot	70	90	100	120	140
	Circling (OCH AAL)	1400 (989)					Rate of descent 5.2%	ft/min	369	474	527	632	737