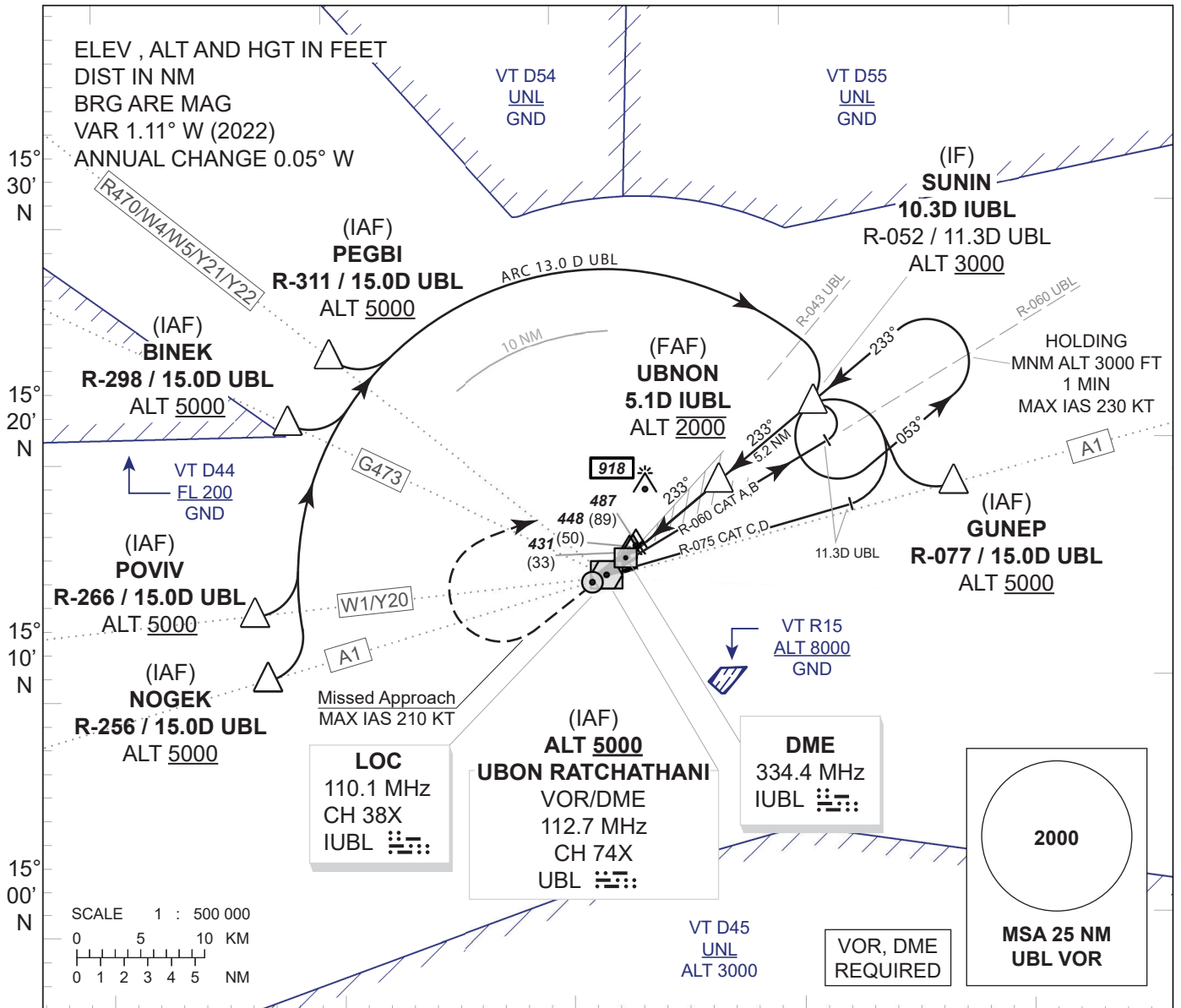


**INSTRUMENT  
APPROACH  
CHART - ICAO**

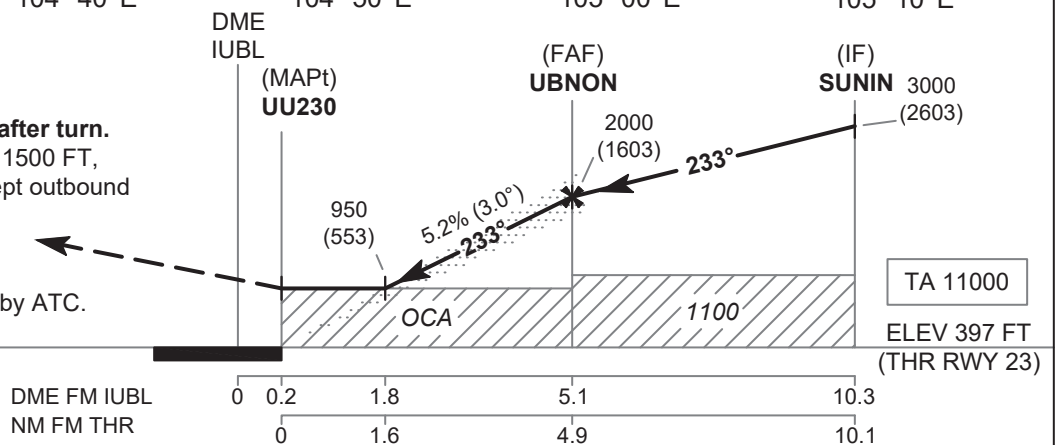
**AERODROME ELEV 411 FT  
HEIGHT RELATED TO  
THR RWY23 - ELEV 397 FT**

APP : 123.5, 257.8  
TWR : 119.9, 274.5  
GND : 121.9, 275.8  
ATIS : 128.2

**UBON RATCHATHANI /  
Ubon Ratchathani (VTUU)  
LOC y RWY23**



**MISSED APPROACH:**  
No turn before MAPt.  
Speed restricted to  
**MAX IAS 210 KT** until after turn.  
Climb straight ahead to 1500 FT,  
then turn right to intercept outbound  
R-052 UBL VOR and  
proceed to SUNIN  
at minimum 3000 FT  
and hold or as directed by ATC.



CHANGE: FAF, PROFILE VIEW.

OCA/H	A	B	C	D	Distance (IUBL)	1.8 D	2 D	3 D	4 D	FAF		
Straight - in Approach	950 (553)				Altitude (Height)	950 (553)	1015 (618)	1330 (933)	1645 (1248)	2000 (1603)		
					Ground speed	knot	70	90	100	120	140	160
Circling (OCH AAL)	1400 (989)				Rate of descent 5.2%	ft/min	369	474	527	632	737	843