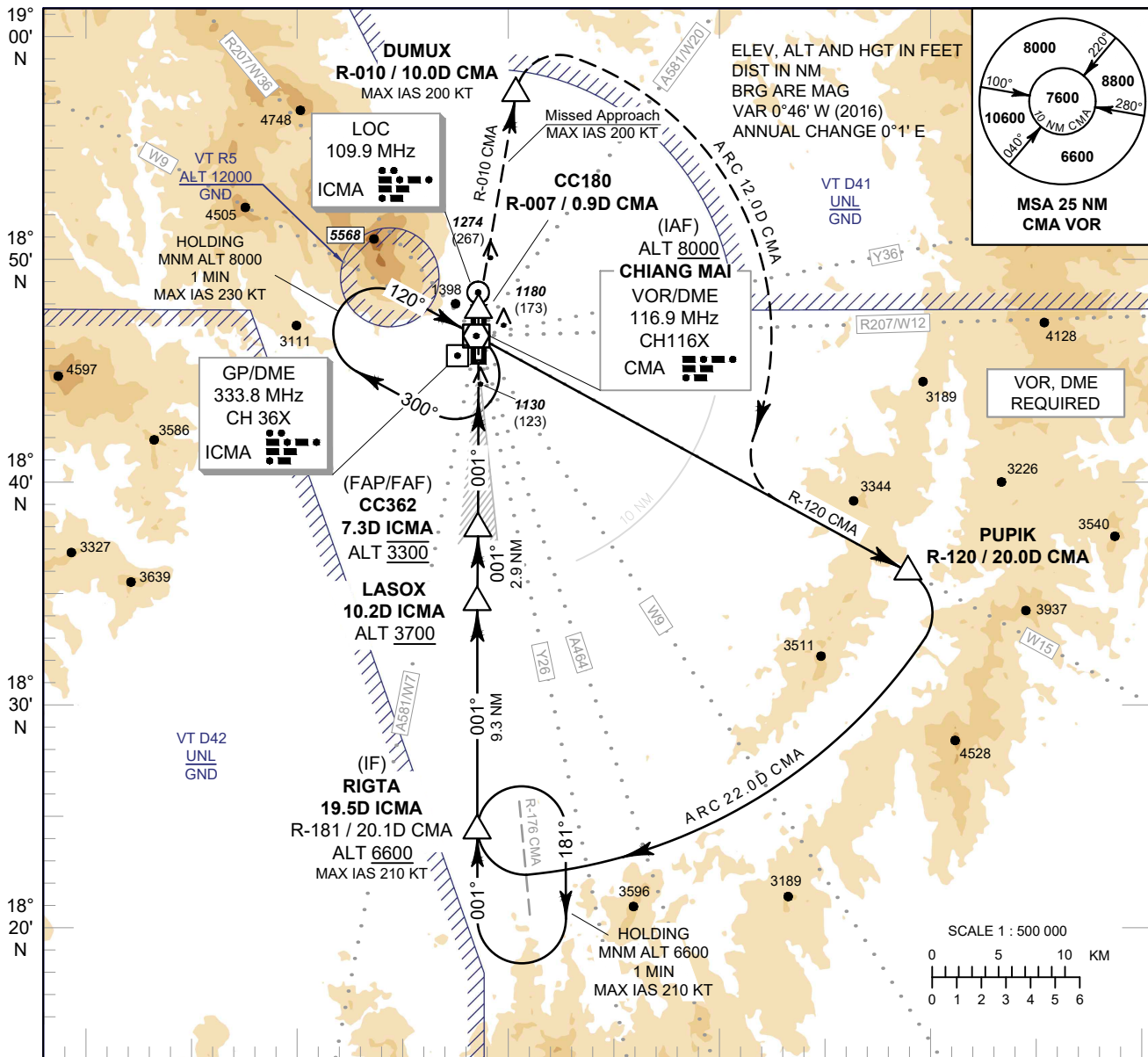


**INSTRUMENT APPROACH CHART - ICAO**  
**AERODROME ELEV 1036 FT**  
**HEIGHTS RELATED TO THR RWY36 - ELEV 1007 FT**

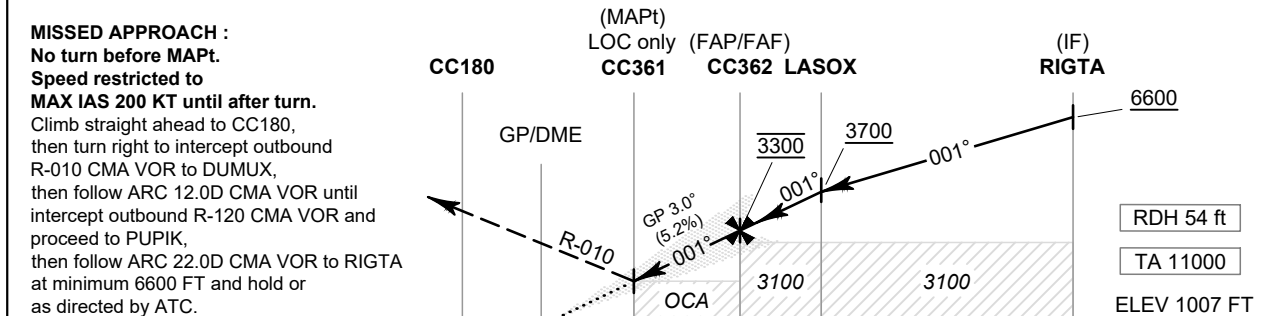
APP : 129.6, 305.4  
 TWR : 118.1, 236.6  
 GND : 121.9, 275.8  
 ATIS : 127.425, 301.5

**CHIANG MAI / Chiang Mai Intl (VTCC)**

**ILS or LOC y RWY36**



098° 40' E    098° 50' E    099° 00' E    099° 10' E    099° 20' E    099° 30' E



**MISSED APPROACH :**  
 No turn before MAPt.  
 Speed restricted to MAX IAS 200 KT until after turn.  
 Climb straight ahead to CC180, then turn right to intercept outbound R-010 CMA VOR to DUMUX, then follow ARC 12.0D CMA VOR until intercept outbound R-120 CMA VOR and proceed to PUPIK, then follow ARC 22.0D CMA VOR to RIGTA at minimum 6600 FT and hold or as directed by ATC.

DME FM GP/DME    0    0.2    2.0    7.3    10.2    19.5  
 NM FM THR    0    1.8    7.1    10.0    19.3

OCA/H		A	B	C	D	Distance (ICMA)	2.0 D	3 D	4 D	5 D	6 D	7 D	FAF
Straight-in Approach	CAT I	1420 (413)				Altitude (Height)	1630 (623)	1945 (938)	2260 (1253)	2575 (1568)	2895 (1888)	3210 (2203)	3300 (2293)
	LOC only	1630 (623)				Altitude (Height)	1630 (623)	1945 (938)	2260 (1253)	2575 (1568)	2895 (1888)	3210 (2203)	3300 (2293)
Circling* (OCH AAL)		2030 (994)		2220 (1184)	2420 (1384)	Ground Speed	knot	70	90	100	120	140	160
* FOR CIRCLING RESTRICTION SEE VERSO						Rate of Descent	ft/min	369	474	527	632	737	843

CHANGE: ATIS FREQUENCY.