

STANDARD DEPARTURE CHART - INSTRUMENT (SID) - ICAO

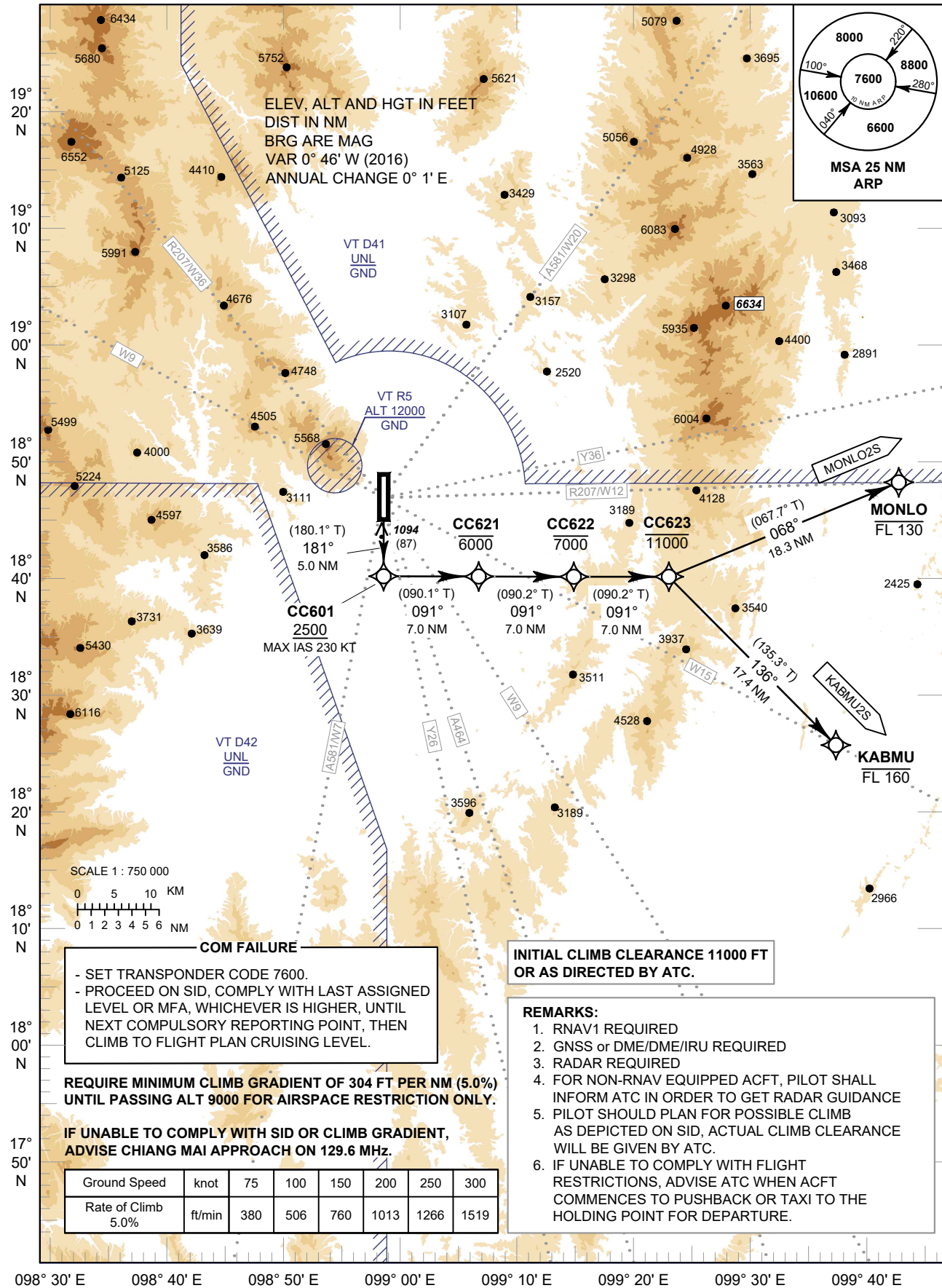
TRANSITION ALTITUDE
11000 FT

CHIANG MAI / Chiang Mai Intl (VTCC)

APP : 129.6 , 305.4
TWR : 118.1 , 236.6
GND : 121.9 , 275.8
ATIS : 127.425 , 301.5

RNAV RWY18

KABMU2S MONLO2S



COM FAILURE

- SET TRANSPONDER CODE 7600.
- PROCEED ON SID, COMPLY WITH LAST ASSIGNED LEVEL OR MFA, WHICHEVER IS HIGHER, UNTIL NEXT COMPULSORY REPORTING POINT, THEN CLIMB TO FLIGHT PLAN CRUISING LEVEL.

REQUIRE MINIMUM CLIMB GRADIENT OF 304 FT PER NM (5.0%) UNTIL PASSING ALT 9000 FOR AIRSPACE RESTRICTION ONLY.

IF UNABLE TO COMPLY WITH SID OR CLIMB GRADIENT, ADVISE CHIANG MAI APPROACH ON 129.6 MHz.

Ground Speed	knot	75	100	150	200	250	300
Rate of Climb 5.0%	ft/min	380	506	760	1013	1266	1519