

**STANDARD DEPARTURE CHART -
INSTRUMENT (SID) - ICAO**

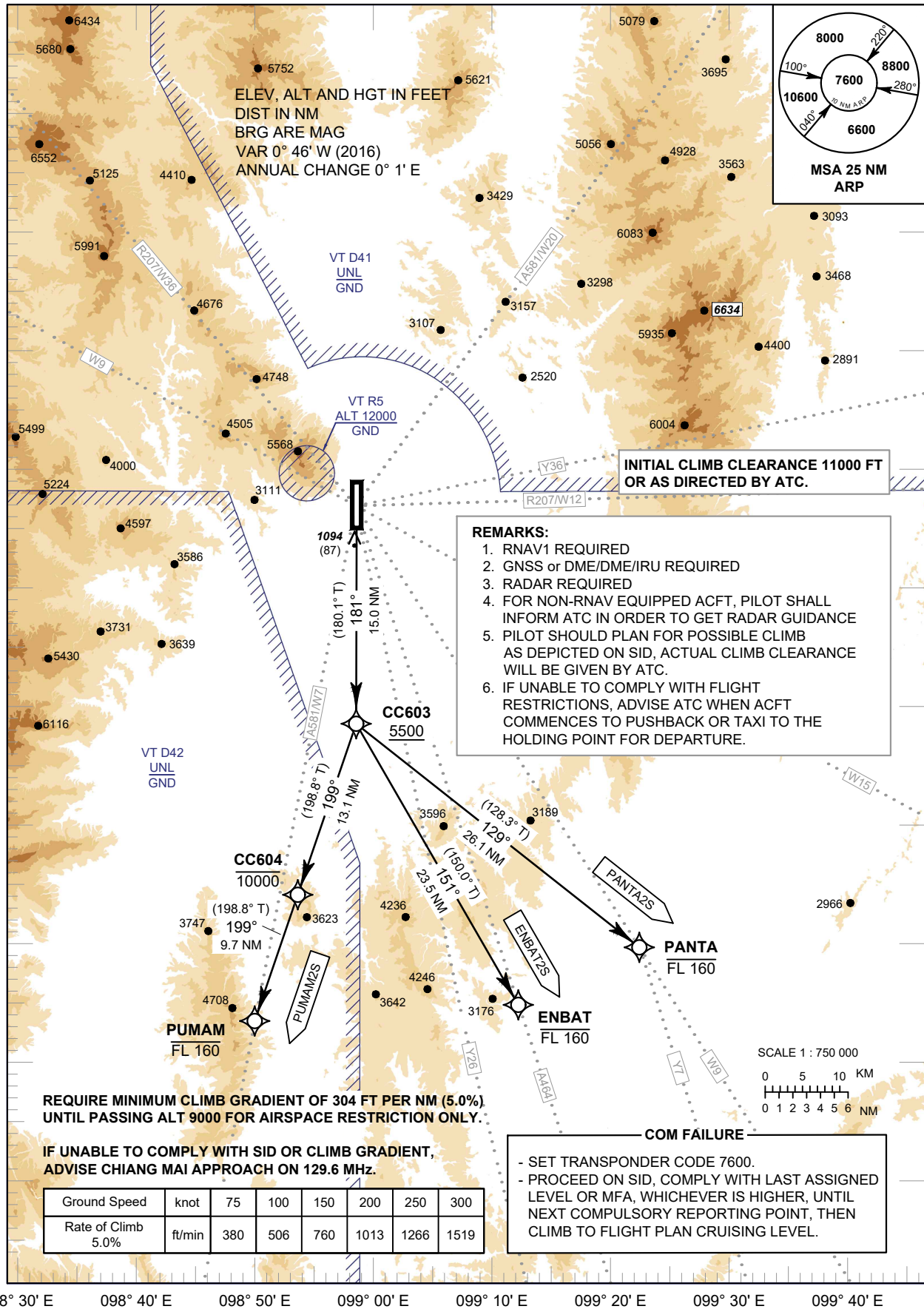
TRANSITION ALTITUDE
11000 FT

CHIANG MAI / Chiang Mai Intl (VTCC)

APP : 129.6 , 305.4
TWR : 118.1 , 236.6
GND : 121.9 , 275.8
ATIS : 127.425 , 301.5

RNAV RWY18

ENBAT2S PANTA2S PUMAM2S



CHANGE: ATIS FREQUENCY.