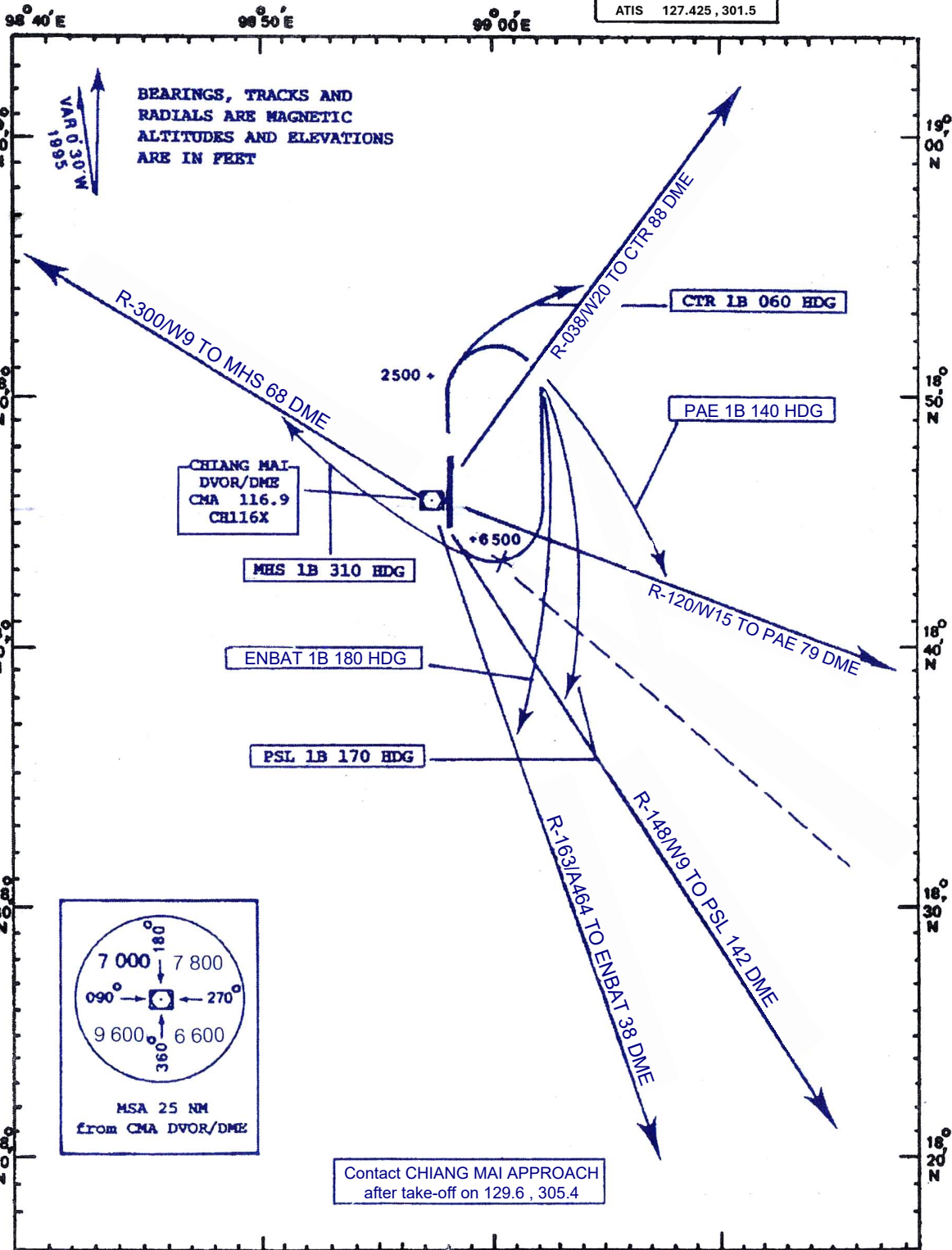


**STANDARD DEPARTURE CHART
INSTRUMENT (SID) - ICAO**

**TRANSITION ALTITUDE
11 000 ft**

TWR 118.1, 236.6
APP 129.6, 305.4
GND 121.9, 275.8
ATIS 127.425, 301.5

**CHIANG MAI
RWY 36**

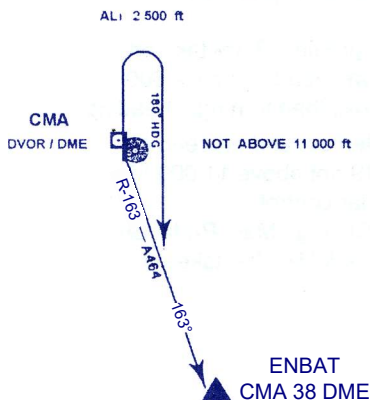


CHANGE: REVISED CHART. ATIS FREQUENCY.

STANDARD INSTRUMENT DEPARTURE RUNWAY 36

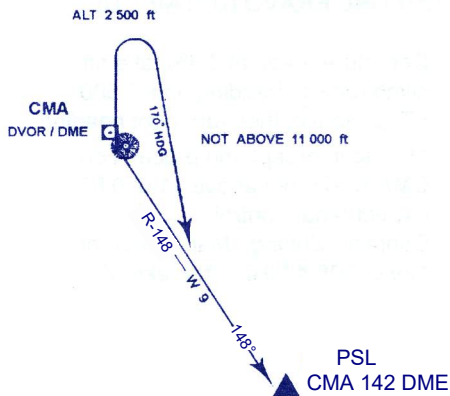
ENBAT ONE BRAVO (ENBAT 1B)

Departure gradient 3.3% take off, climb runway heading until 2 500 FT, or above, then turn right heading 180° to intercept and proceed on CMA R-163 not above 11 000 FT. Expect radar control. Contact Chiang Mai Approach on 129.6, 305.4 MHZ after take-off.



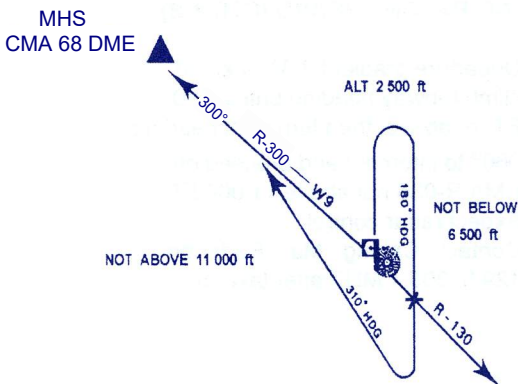
PHITSANULOK ONE BRAVO (PSL 1B)

Departure gradient 3.3% take off, climb runway heading until 2 500 FT, or above, then turn right heading 170° to intercept and proceed on CMA R-148 not above 11 000 FT. Expect radar control. Contact Chiang Mai Approach on 129.6, 305.4 MHZ after take-off.



MAE HONG SON ONE BRAVO (MHS 1B)

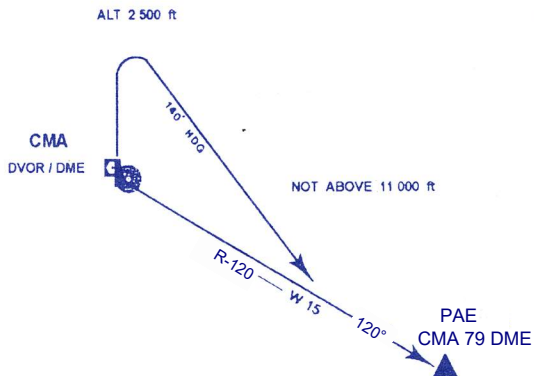
Departure gradient 3.3% take off, climb runway heading until 2 500 FT, or above, then turn right heading 180° to cross CMA R-130 not below 6 500 FT turn right heading 310° to intercept and proceed on CMA R-300 not above 11 000 FT. Expect radar control. Contact Chiang Mai Approach on 129.6, 305.4 MHZ after take-off.



STANDARD INSTRUMENT DEPARTURE RUNWAY 36

PHRAE ONE BRAVO (PAE 1B)

Departure gradient 3.3% take off, climb runway heading until 2 500 FT, or above, then turn right heading 140° to intercept and proceed on CMA R-120 not above 11 000 FT. Expect radar control. Contact Chiang Mai Approach on 129.6, 305.4 MHZ after take-off.



CHIANG RAI ONE BRAVO (CTR 1B)

Departure gradient 3.3% take off, climb runway heading until 2 500 FT, or above, then turn right heading 060° to intercept and proceed on CMA R-038 not above 11 000 FT. Expect radar control. Contact Chiang Mai Approach on 129.6, 305.4 MHZ after take-off.

