

**STANDARD ARRIVAL CHART -
INSTRUMENT (STAR) - ICAO**

TRANSITION ALTITUDE
11000 FT

SPEED RESTRICTION
MAX IAS 250 KT AT OR
BELOW ALT 10000 FT
UNLESS OTHERWISE
AUTHORIZED BY ATC.

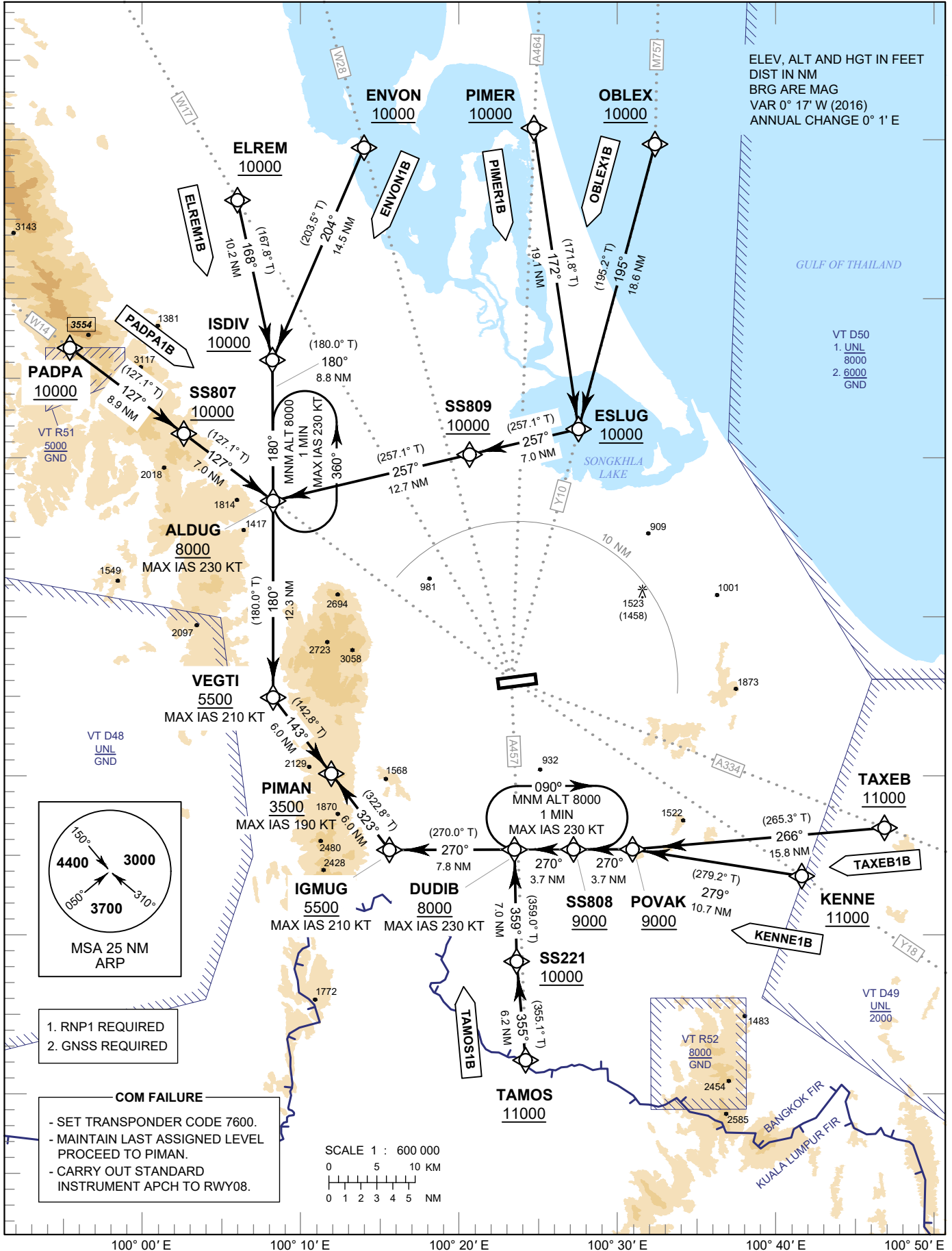
APP : 126.7, 301.5
TWR : 118.1, 275.8
GND : 121.9, 257.8
ATIS : 128.8

**SONGKHLA / Hat Yai Intl (VTSS)
RNAV RWY08**

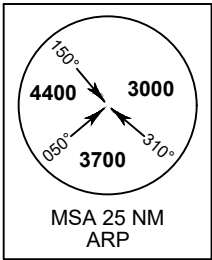
ELREM1B ENVON1B
KENNE1B OBLEX1B PADPA1B
PIMER1B TAMOS1B TAXEB1B

ELEV, ALT AND HGT IN FEET
DIST IN NM
BRG ARE MAG
VAR 0° 17' W (2016)
ANNUAL CHANGE 0° 1' E

VT D50
1. UNL
8000
2. 6000
GND



CHANGE : CANCEL STAR NOBIT1B AND W14 (HTY-PT-NTW).
COURSE AND DISTANCE TAMOS TO SS221.



1. RNP1 REQUIRED
2. GNSS REQUIRED

COM FAILURE

- SET TRANSPONDER CODE 7600.
- MAINTAIN LAST ASSIGNED LEVEL
- PROCEED TO PIMAN.
- CARRY OUT STANDARD INSTRUMENT APCH TO RWY08.

