

**STANDARD DEPARTURE CHART -  
INSTRUMENT (SID) - ICAO**

TRANSITION ALTITUDE  
11000 FT

APP : 126.7, 301.5  
TWR : 118.1, 275.8  
GND : 121.9, 257.8  
ATIS : 128.8

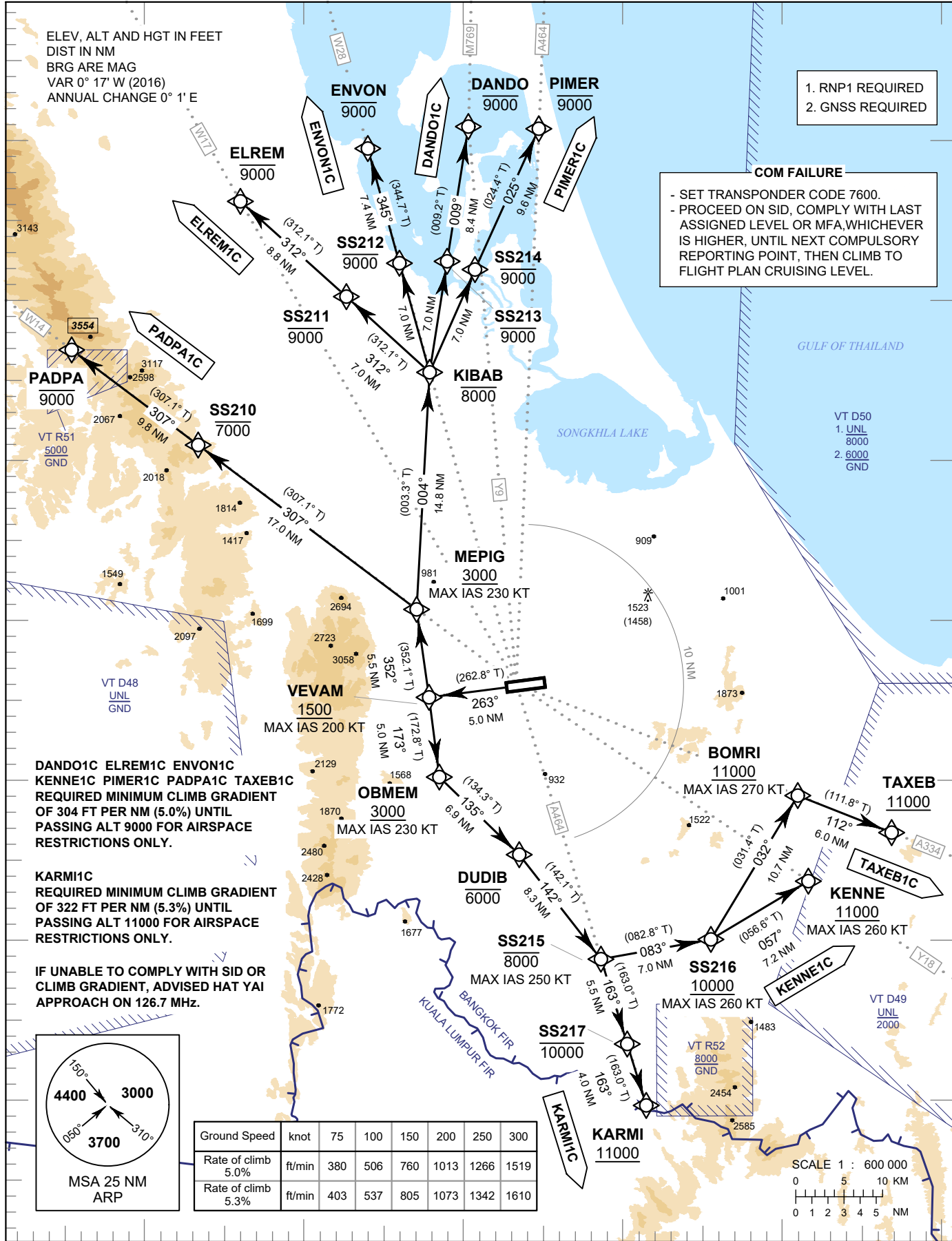
**SONGKHLA / Hat Yai Intl (VTSS)  
RNAV RWY26**

DANDO1C ELREM1C  
ENVON1C KARM1C KENNE1C  
PADPA1C PIMER1C TAXEB1C

- 1. RNP1 REQUIRED
- 2. GNSS REQUIRED

**COM FAILURE**

- SET TRANSPONDER CODE 7600.
- PROCEED ON SID, COMPLY WITH LAST ASSIGNED LEVEL OR MFA,WHICHEVER IS HIGHER, UNTIL NEXT COMPULSORY REPORTING POINT, THEN CLIMB TO FLIGHT PLAN CRUISING LEVEL.

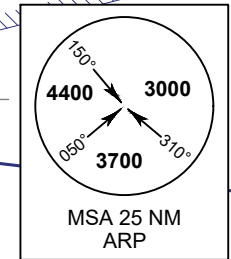


ELEV, ALT AND HGT IN FEET  
DIST IN NM  
BRG ARE MAG  
VAR 0° 17' W (2016)  
ANNUAL CHANGE 0° 1' E

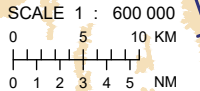
DANDO1C ELREM1C ENVON1C  
KENNE1C PIMER1C PADPA1C TAXEB1C  
REQUIRED MINIMUM CLIMB GRADIENT  
OF 304 FT PER NM (5.0%) UNTIL  
PASSING ALT 9000 FOR AIRSPACE  
RESTRICTIONS ONLY.

KARM1C  
REQUIRED MINIMUM CLIMB GRADIENT  
OF 322 FT PER NM (5.3%) UNTIL  
PASSING ALT 11000 FOR AIRSPACE  
RESTRICTIONS ONLY.

IF UNABLE TO COMPLY WITH SID OR  
CLIMB GRADIENT, ADVISED HAT YAI  
APPROACH ON 126.7 MHz.



Ground Speed	knot	75	100	150	200	250	300	
Rate of climb	5.0%	ft/min	380	506	760	1013	1266	1519
Rate of climb	5.3%	ft/min	403	537	805	1073	1342	1610



CHANGE : CANCEL SID NOBIT1C AND W14 (HTY-PT-NTW).