

**STANDARD DEPARTURE CHART -
INSTRUMENT (SID) - ICAO**

TRANSITION ALTITUDE
11000 FT

APP : 126.7, 301.5
TWR : 118.1, 275.8
GND : 121.9, 257.8
ATIS : 128.8

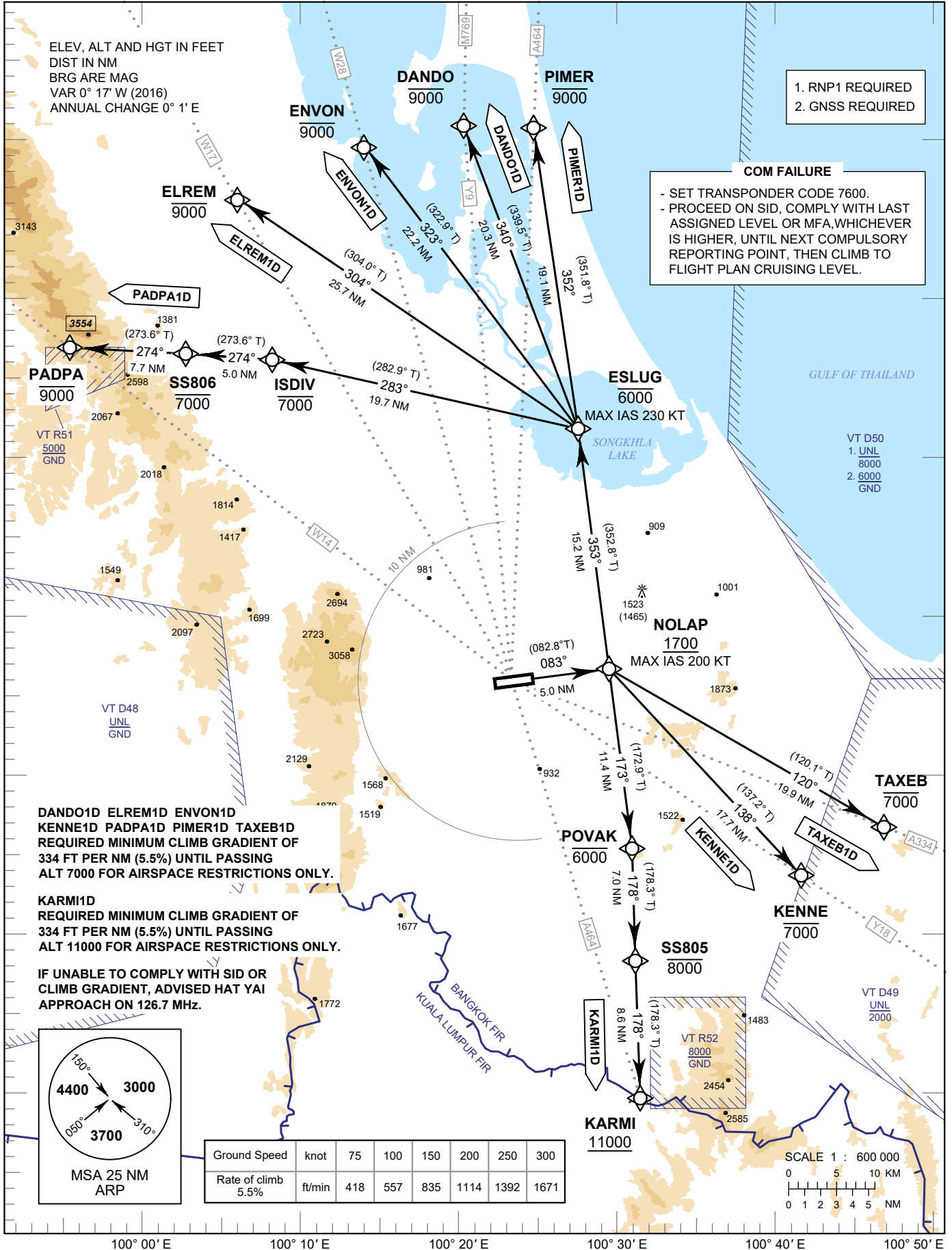
**SONGKHLA / Hat Yai Intl (VTSS)
RNAV RWY08**

DANDO1D ELREM1D
ENVON1D KARM11D KENNE1D
PADPA1D PIMER1D TAXEB1D

1. RNP1 REQUIRED
2. GNSS REQUIRED

COM FAILURE

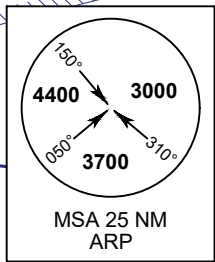
- SET TRANSPONDER CODE 7600.
- PROCEED ON SID, COMPLY WITH LAST ASSIGNED LEVEL OR MFA, WHICHEVER IS HIGHER, UNTIL NEXT COMPULSORY REPORTING POINT, THEN CLIMB TO FLIGHT PLAN CRUISING LEVEL.



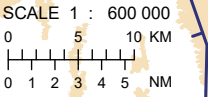
DANDO1D ELREM1D ENVON1D
KENNE1D PADPA1D PIMER1D TAXEB1D
REQUIRED MINIMUM CLIMB GRADIENT OF
334 FT PER NM (5.5%) UNTIL PASSING
ALT 7000 FOR AIRSPACE RESTRICTIONS ONLY.

KARM11D
REQUIRED MINIMUM CLIMB GRADIENT OF
334 FT PER NM (5.5%) UNTIL PASSING
ALT 11000 FOR AIRSPACE RESTRICTIONS ONLY.

IF UNABLE TO COMPLY WITH SID OR
CLIMB GRADIENT, ADVISED HAT YAI
APPROACH ON 126.7 MHZ.



Ground Speed	knot	75	100	150	200	250	300
Rate of climb	ft/min	418	557	835	1114	1392	1671
		5.5%					



CHANGE : CANCEL SID NOBIT1D AND W14 (HTY-PT-NTW).