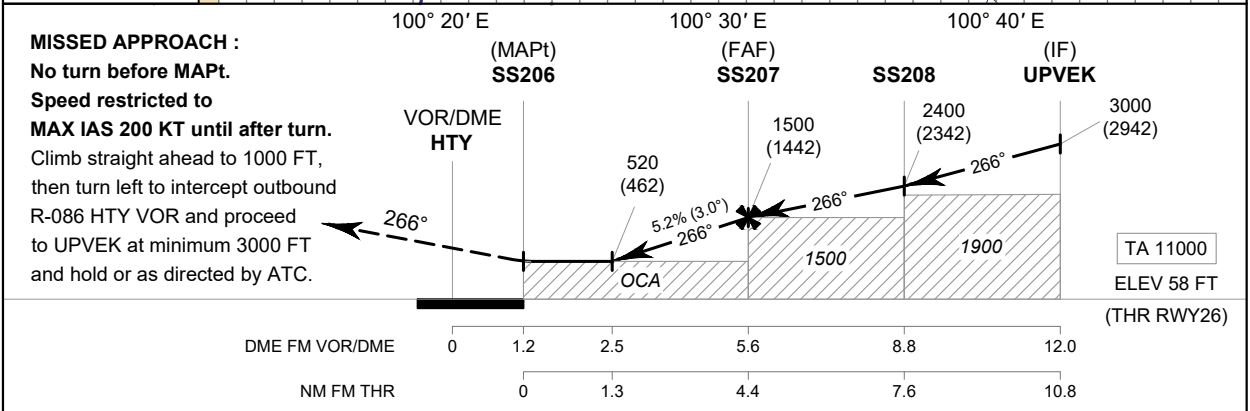
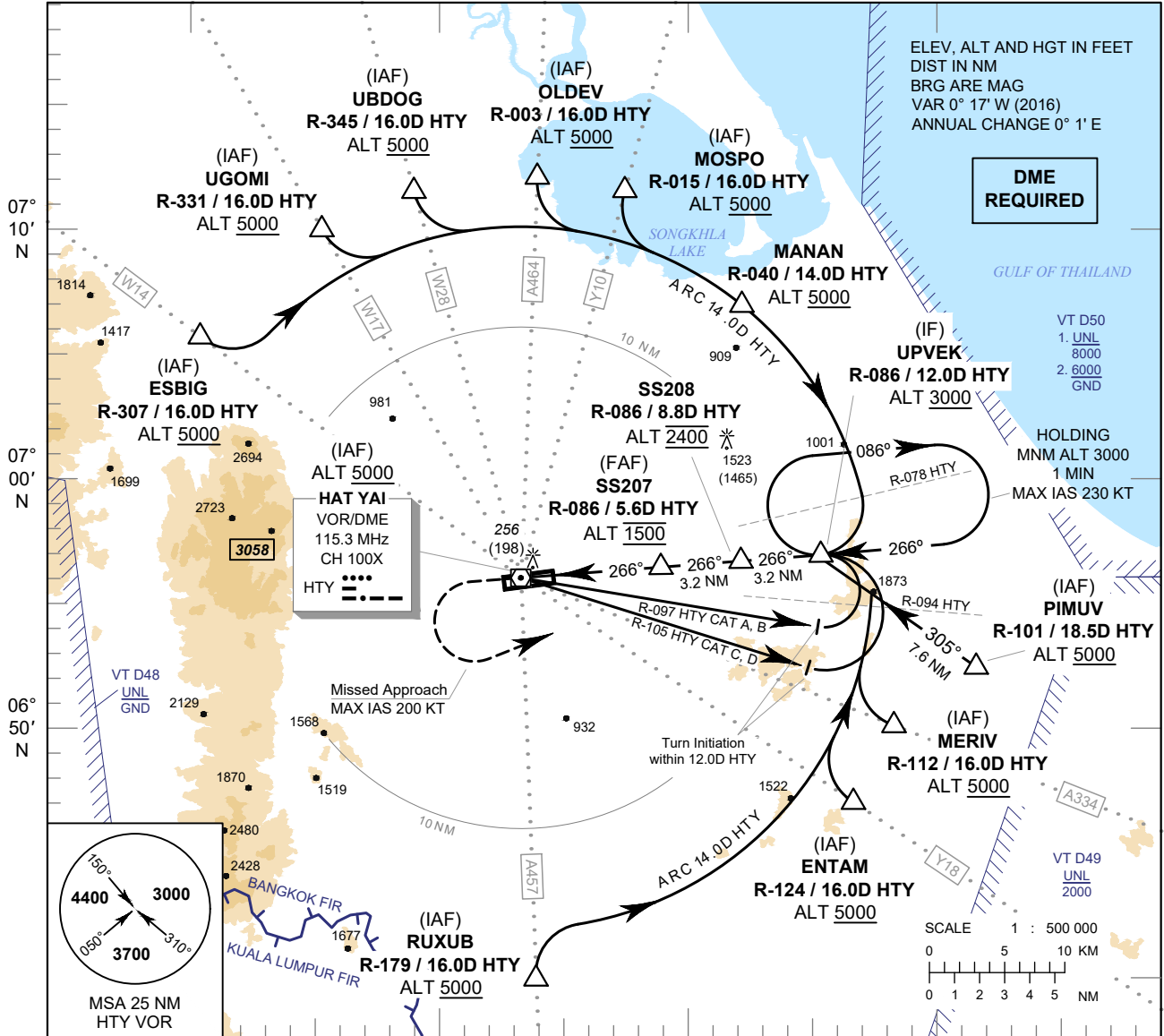


**INSTRUMENT**      **AERODROME ELEV 90 FT**  
**APPROACH**        HEIGHTS RELATED TO  
**CHART - ICAO**     THR RWY26 - ELEV 58 FT

APP : 126.7, 301.5  
TWR : 118.1, 275.8  
GND : 121.9, 257.8  
ATIS : 128.8

**SONGKHLA / Hat Yai Intl (VTSS)**  
**VOR RWY26**



OCA/H	A	B	C	D	Distance (HTY)	2.5D	3D	4D	5D	FAF	
						Altitude (Height)	Ground Speed	Rate of Descent	ft/min		
Straight - in Approach	520 (462)				520 (462)	680 (622)	995 (937)	1310 (1252)	1500 (1442)		
					knot	70	90	100	120	140	160
Circling (OCH AAL)	900 (810)		1500 (1410)		ft/min	369	474	527	632	737	843

CHANGE : CANCEL W14 (HTY-PT-NTW).