

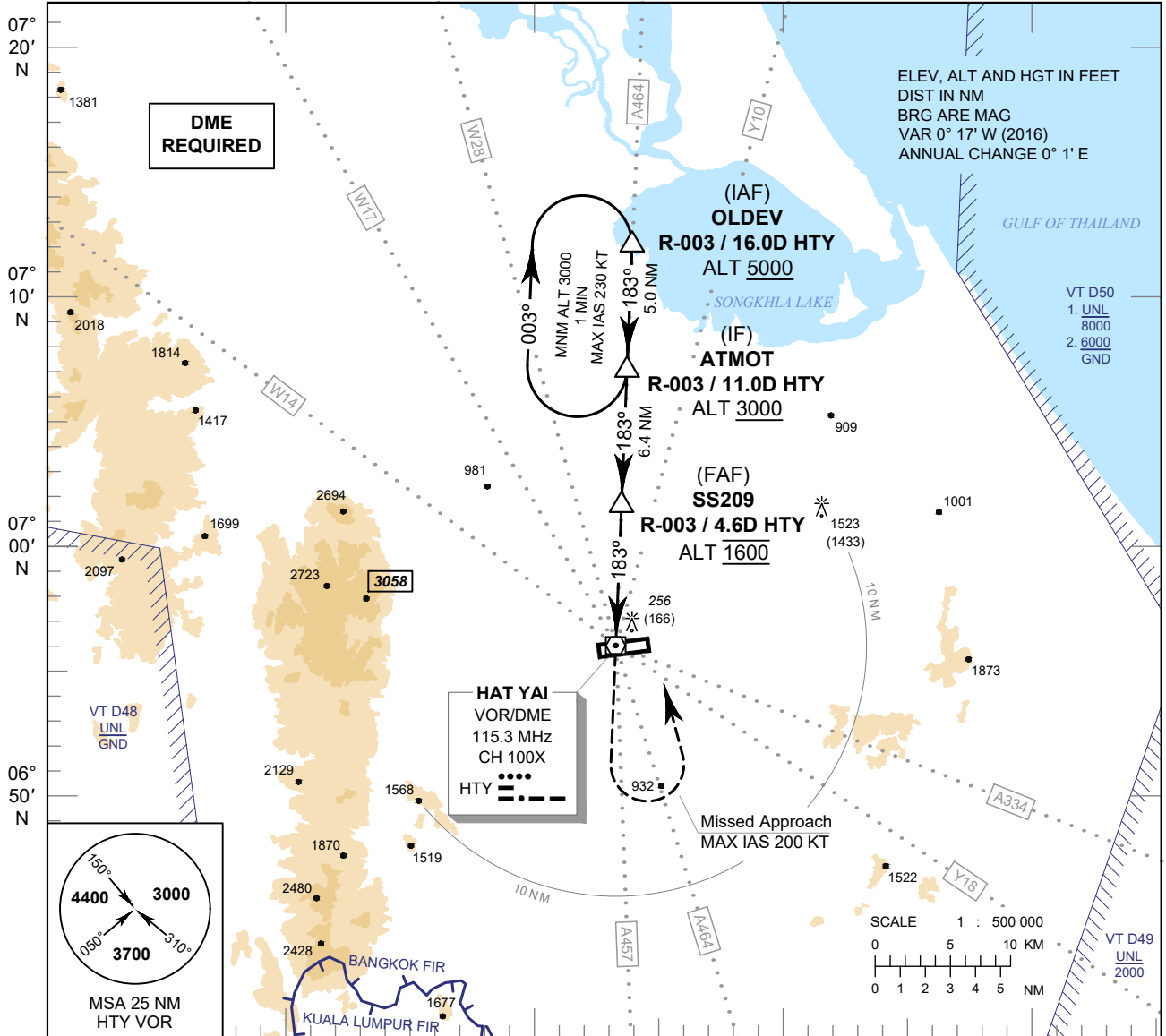
INSTRUMENT APPROACH CHART - ICAO

AERODROME ELEV 90 FT
HEIGHTS RELATED TO AERODROME ELEV

APP : 126.7, 301.5
 TWR : 118.1, 275.8
 GND : 121.9, 257.8
 ATIS : 128.8

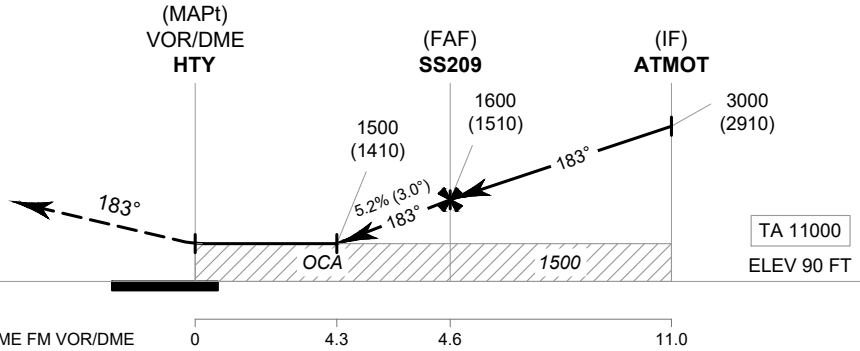
SONGKHLA / Hat Yai Intl (VTSS)

VOR a



MISSED APPROACH :

No turn before MAPt.
Speed restricted to MAX IAS 200 KT until after turn.
 Climb straight ahead to 2000 FT, then turn left to intercept outbound R-003 HTY VOR and proceed to ATMOT at minimum 3000 FT and hold or as directed by ATC.



OCA/H	A	B	C	D	Distance (HTY)	4.3D			FAF			
Straight - in Approach	Not authorized				Altitude (Height)	1500 (1410)			1600 (1510)			
					Ground Speed	knot	70	90	100	120	140	160
Circling (OCH AAL)	900 (810)		1500 (1410)		Rate of Descent 5.2%	ft/min	369	474	527	632	737	843

CHANGE : CANCEL W14 (HTY-PT-NTW).