

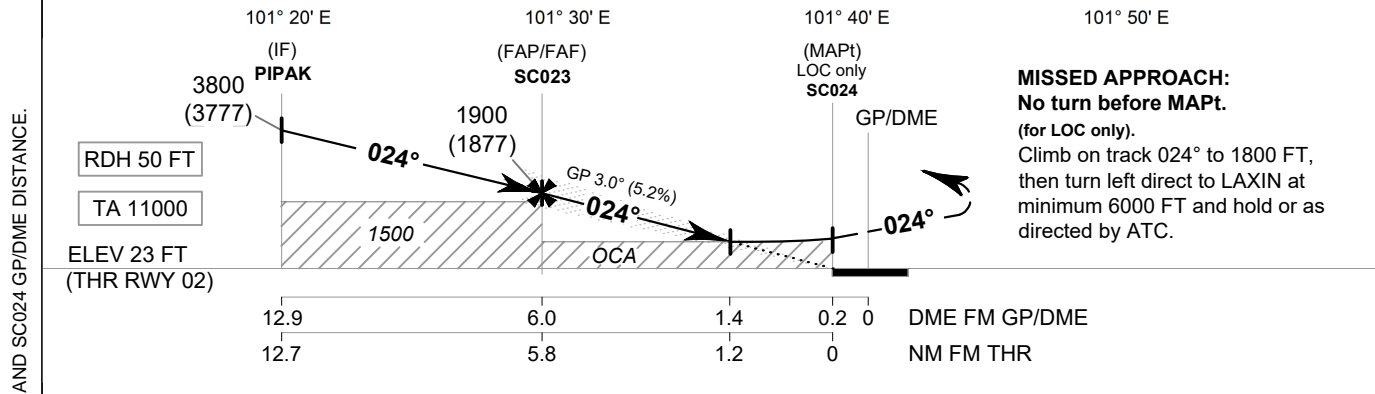
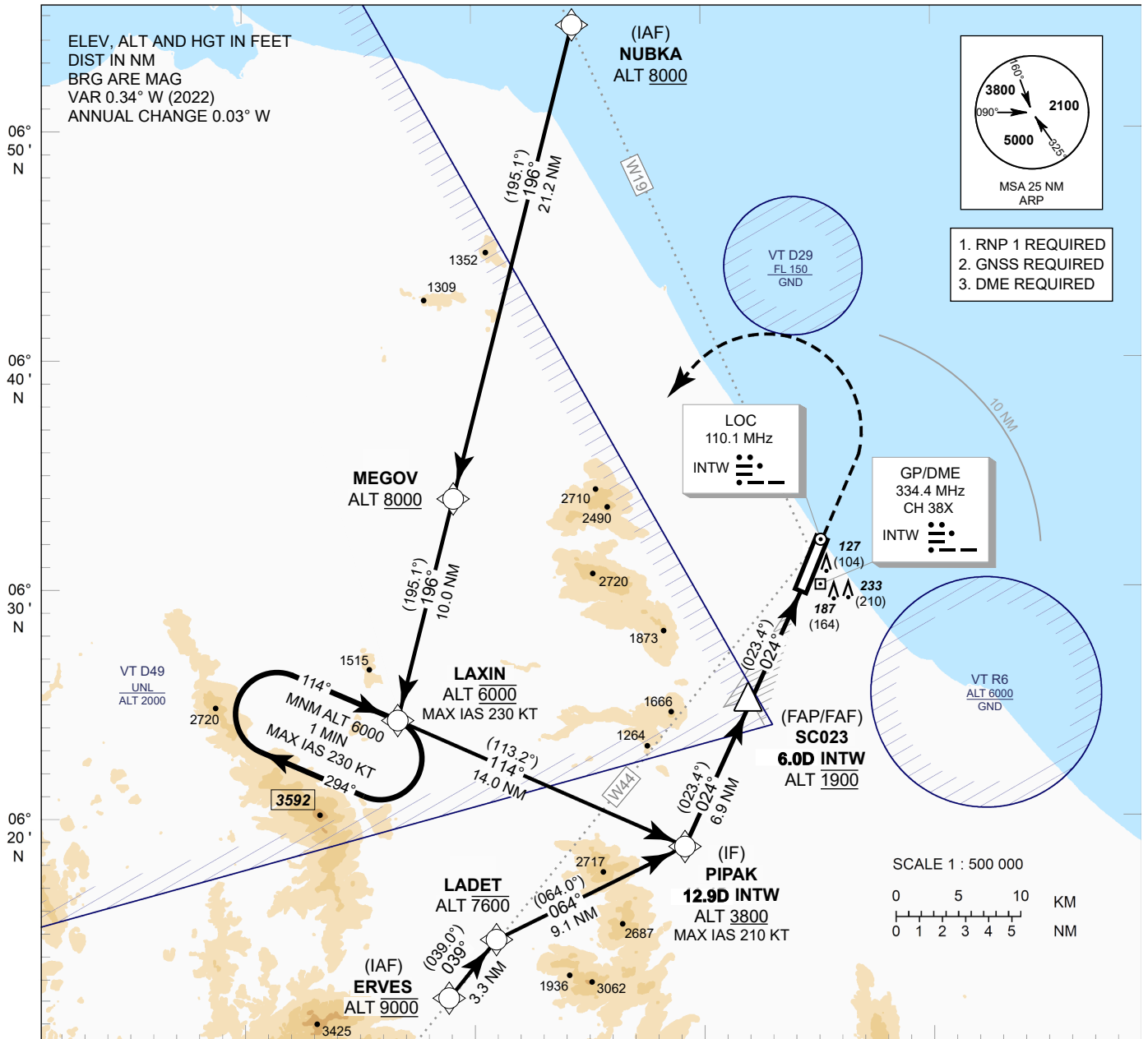
INSTRUMENT APPROACH CHART - ICAO

AERODROME ELEV 23 FT
HEIGHTS RELATED TO THR RWY02 - ELEV 23 FT

APP : 125.55 MHz
 TWR : 122.7, 236.6 MHz
 GND : 121.9 MHz
 ATIS : 383.0 kHz

NARATHIWAT / Narathiwat (VTSC)

ILS or LOC z RWY02



CHANGE: PIPAK, SC023 AND SC024 GP/DME DISTANCE.

MISSED APPROACH:
No turn before MAPt.
 (for LOC only).
 Climb on track 024° to 1800 FT, then turn left direct to LAXIN at minimum 6000 FT and hold or as directed by ATC.

OCA/H		A	B	C	D	GS OUT	Distance (INTW)	FAF	6D	5D	4D	3D	2D	1.4D	
Straight - in Approach	CAT I	300 (277)						12.9	1900 (1877)	1840 (1817)	1525 (1502)	1210 (1187)	895 (872)	580 (557)	450 (427)
LOC only		450 (427)					12.7		knot	70	90	100	120	140	160
Circling (OCH AAL)		900 (877)							ft/min	369	474	527	632	737	843