

INSTRUMENT APPROACH CHART - ICAO

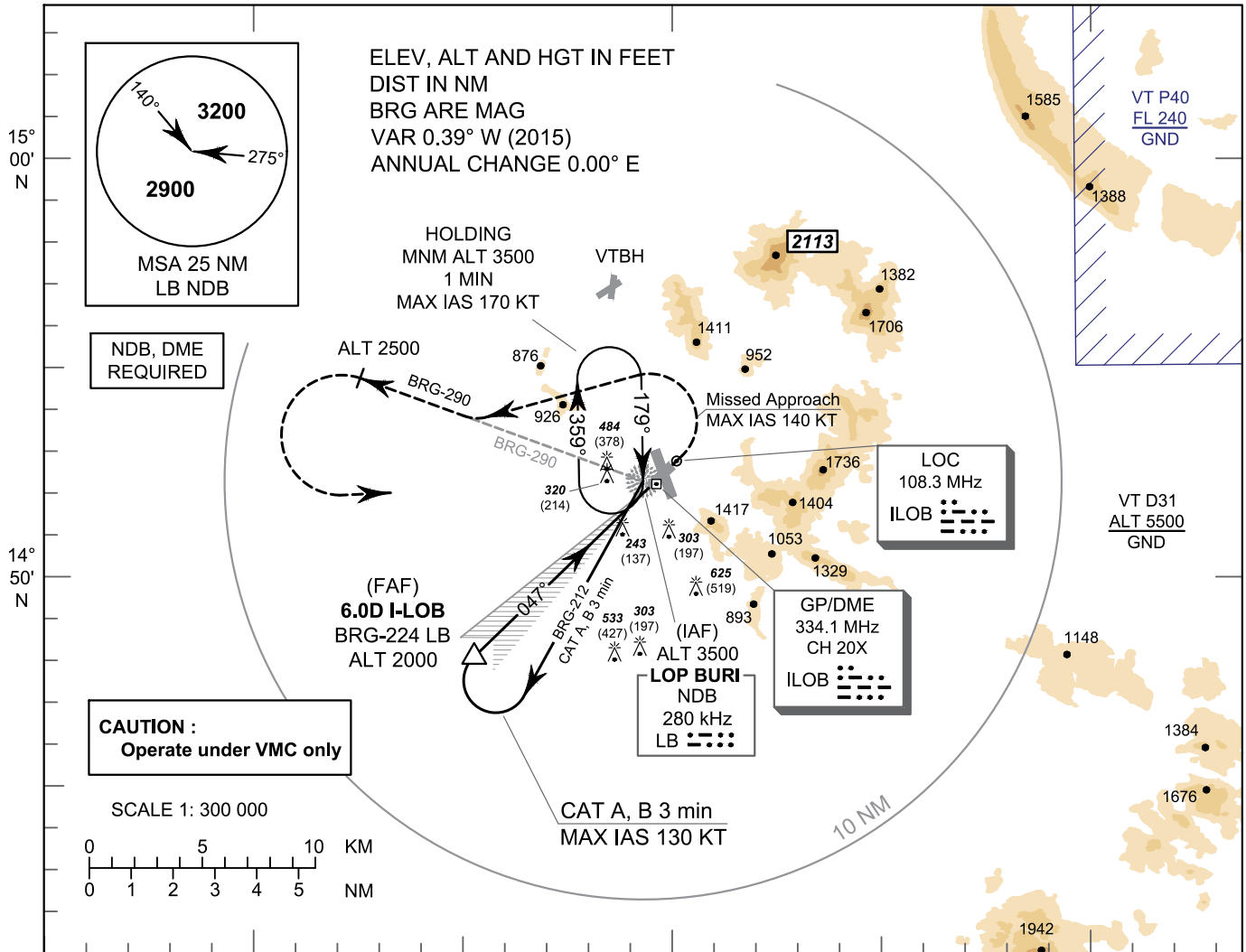
AERODROME ELEV 133 FT
 HEIGHTS RELATED TO THR RWY05 - ELEV 106 FT

TWR : 122.6 , 238.6
 GND : 121.75 , 257.8

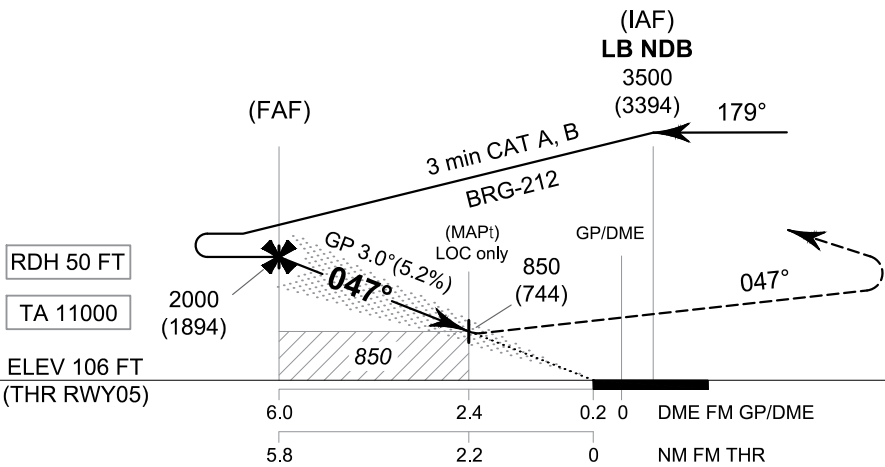
LOP BURI / KHOK KATHIAM (VTBL)
ILS or LOC RWY05

CAT A, B

Military Use only



100° 30' E 100° 40' E 100° 50' E



MISSED APPROACH:
 No turn before MAPt (for LOC only).
 Speed restricted to MAX IAS 140 KT
 until after turn.

Climb straight ahead to 1000 FT,
 then turn left to intercept outbound
 BRG-290 LB NDB and continue climb
 until 2500 FT, then turn left direct to
 LB NDB at 3500 FT and hold or
 as directed by ATC.

CHANGE: NEW CHART.

OCA/H		A	B	GS OUT	Distance (ILOB)	FAF	5 D	4 D	3 D	2.4 D	
Straight - in Approach	CAT I	790 (684)			Altitude (Height)	2000 (1894)	1670 (1564)	1355 (1249)	1040 (934)	850 (744)	
LOC only		850 (744)		Ground speed	knot	70	90	100	120	140	160
Circling (OCH AAL)		Not Authorized		Rate of descent (5.2%)	(ft/min)	369	474	527	632	737	843