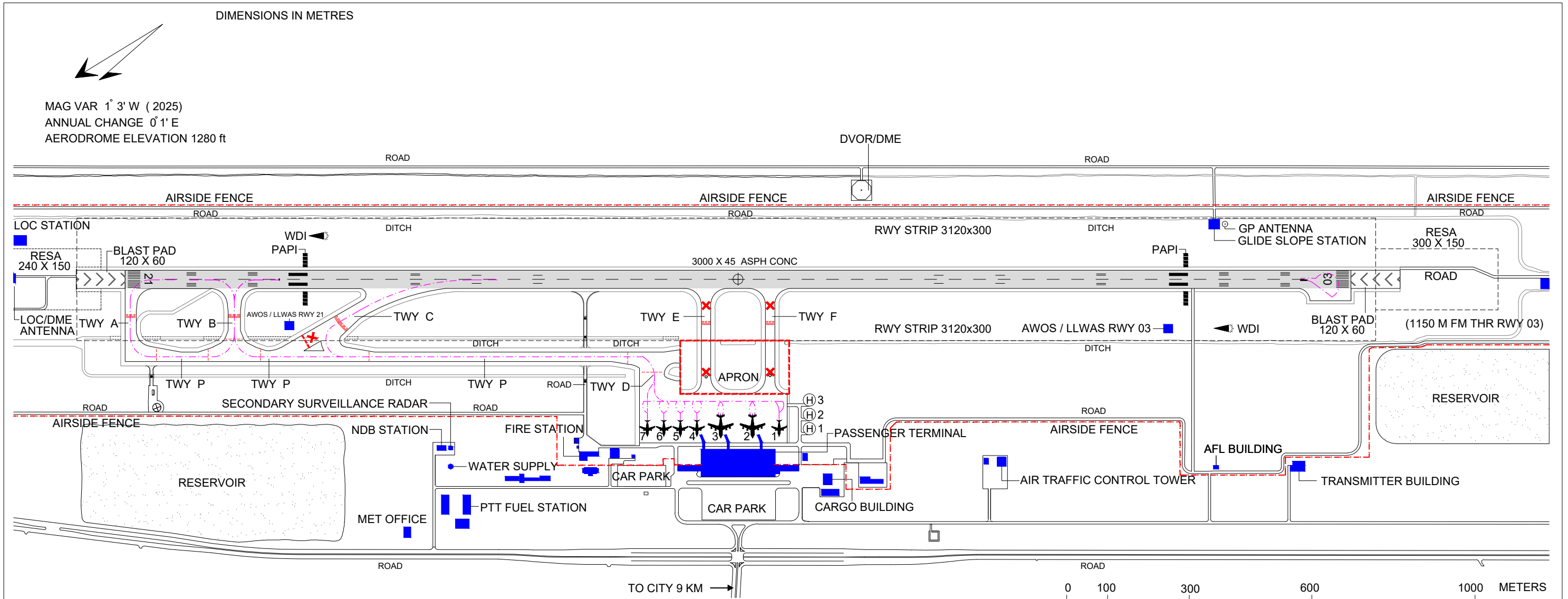


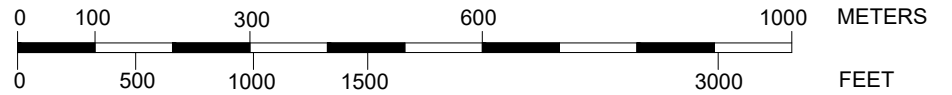
# Mae Fah Laung-Chiang Rai International Airport / Aerodrome Ground Movement Chart



DIMENSIONS IN METRES

MAG VAR 1° 3' W (2025)  
ANNUAL CHANGE 0° 1' E  
AERODROME ELEVATION 1280 ft

TO CITY 9 KM →



## LEGEND

AERODROME REFERENCE POINT	19 57 08 N 99 52 59 E	
BUILDING OR LARGE STRUCTURE		
TAXI ROUTES		
HELICOPTER STAND AND IDENTIFICATION	(H) 1	
AIRCRAFT STAND AND IDENTIFICATION	✈ 1	
RUNWAY HOLDING POSITION		
INTERMEDIATE HOLDING POSITION		
WIND DIRECTION INDICATOR (LIGHTED)		
ANTENNA		
VOR CHECK POINT		
CLOSED TAXIWAY		
CONSTRUCTION BARRIERS		

## TAXIWAYS ; STRENGTH, SURFACE AND WIDTH

ID	PCN-SFC	WIDTH (M)
A	PCR 1500/R/D/W/T	27.5
B	PCR 1500/R/D/W/T	30
C	PCR 1500/R/D/W/T	35
D	PCR 1500/R/D/W/T	23
P	PCR 1500/R/D/W/T	23

## REMARK :

- SITE OF ARP CENTER LINE OF RUNWAY 1500 M FM THR RWY 21
- RUNWAY SURFACE : ASPH CONC STRENGTH : PCR 1000/F/A/X/T
- ACFT STAND NR 2,3 AND 4 AVAILABLE WITH SINGLE-END PASSENGER LOADING BRIDGES
- ALL ACFT STAND IS NOSE-IN PARKING
- ENGINE RUN-UP AREA LOCATED ON THE BEGINNING OF RWY 21 (FACE SOUTH)
- ISOLATE AIRCRAFT PARKING POSITION LOCATED AT THE NORTH END OF TWY P BETWEEN TWY A AND TWY B
- ACFT CODE LETTER C AND D MUST BACKTRACK ON RWY TURN PAD ONLY WHEN RWY 21 IS IN USE FOR ARRIVING
- RWY TURN PAD AT THE END OF RWY 21 USED ONLY FOR ACFT WITH OUTER MAIN GEAR WHEEL SPAN (OMGWS) LESS THAN 9M
- TWY C USED FOR EXIT FROM RWY ONLY
- TWY C (PORTION TO B), E AND F ARE CLOSED DUE TO WIP.
- TURN PAD AT THE END OF RWY 03 IS TERMINATED, DO NOT USE.