

**STANDARD ARRIVAL CHART -
INSTRUMENT (STAR) - ICAO**

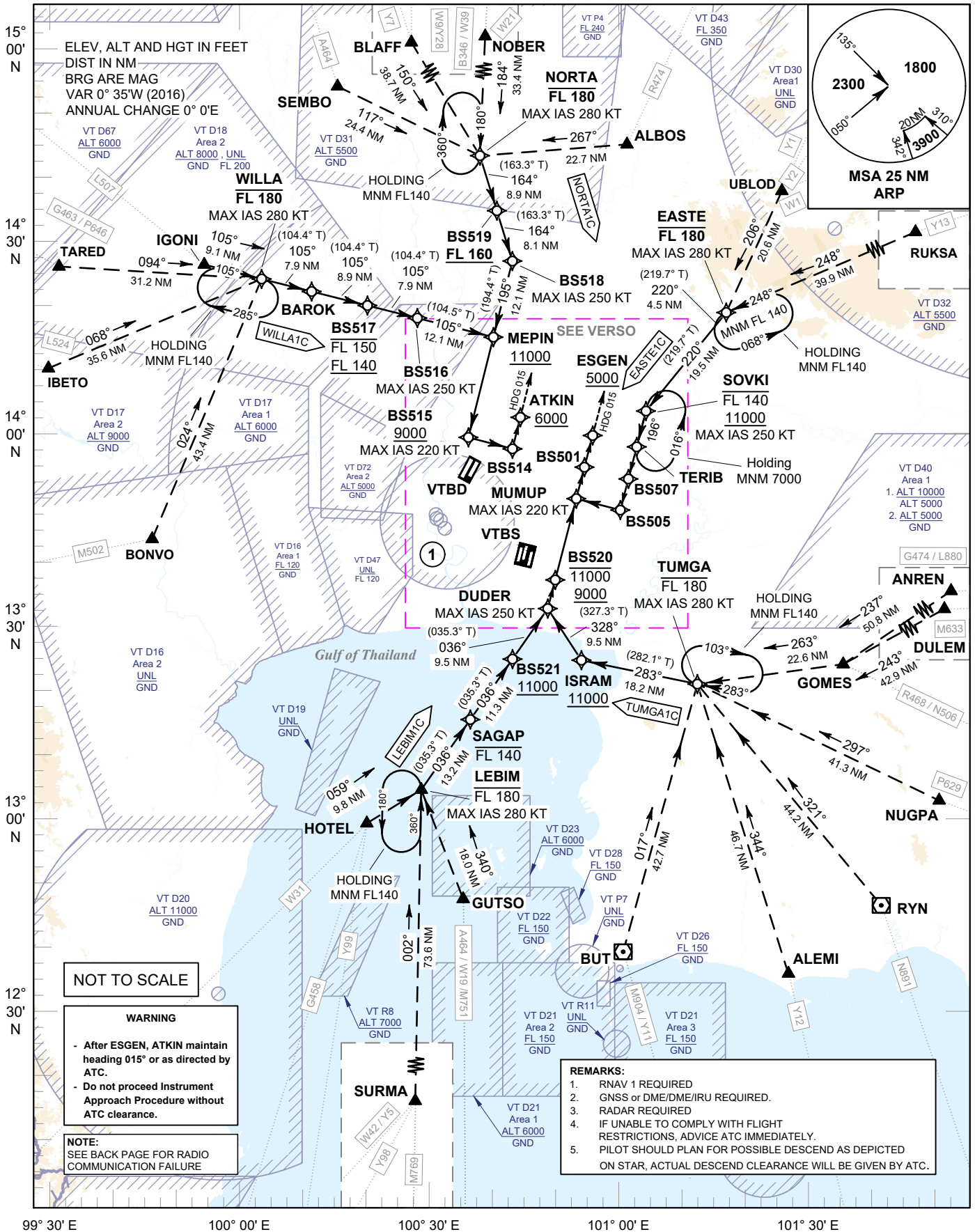
TRANSITION ALTITUDE
11000 FT

SPEED RESTRICTION
MAX IAS 250 KT AT OR
BELOW ALT 10000 FT
UNLESS OTHERWISE
AUTHORIZED BY ATC.

APP	: 119.1, 262.5
	: 120.3, 262.5
	: 133.4, 262.5
	: 122.35, 262.5
	: 124.35, 262.5
	: 125.2, 262.5
ARR	: 121.1, 262.5
	: 126.3, 262.5
TWR	: 118.2, 274.5
	: 119.0
ARR ATIS	: 133.6, 278.6

**BANGKOK/Suvarnabhumi Intl (VTBS)
RNAV RWY19/20L/20R**

EASTE1C LEBIM1C NORTA1C
TUMGA1C WILLA1C



99° 30' E 100° 00' E 100° 30' E 101° 00' E 101° 30' E

RADIO COMMUNICATION FAILURE

1	SET THE AIRCRAFT TRANSPONDER TO MODE A/C CODE 7600
2	PROCEED ACCORDING TO THE STAR ROUTE TO THE TERMINATION POINT ATKIN/ESGEN, DESCEND IN ACCORDANCE WITH THE PUBLISHED ALL SPEED AND ALTITUDE RESTRICTIONS OF THE RELEVANT STAR PROCEDURE, THENCE: AFTER PASSING ATKIN/ESGEN FLY HEADING 015 AND MAINTAIN ALTITUDE 6000 FT FOR NEXT 10 NM, THEN TURN RIGHT/LEFT AND DESCEND TO 2000 FT AND CARRY OUT THE APPROPRIATE APPROACH PROCEDURE.
3	WHEN AN ARRIVING AIRCRAFT IS BEING RADAR VECTORED , IF NO TRANSMISSIONS ARE HEARD ON THE FREQUENCY IN USE FOR A PERIOD OF TWO MINUTES , A RADIO FREQUENCY CHECK IS TO BE MADE. IF THE RADIO FREQUENCY CHECK INDICATES A RADIO COMMUNICATION FAILURE. PILOT SHOULD PROCEED IN THE MOST DIRECT MANNER POSSIBLE TO REJOIN THE STAR PROCEDURE APPROPRIATE TO ITS ATS ROUTE AND LANDING DIRECTION AND THEN COMPLY WITH THE PROCEDURES IN ITEM 2 ABOVE.
4	FOR MORE INFORMATION OR OTHER CASES. REFER TO AIP VTBS AD 2.22, RADIO COMMUNICATION FAILURE.

**STANDARD ARRIVAL CHART -
INSTRUMENT (STAR) - ICAO**

**BANGKOK/Suvarnabhumi Intl (VTBS)
RNAV RWY19/20L/20R**

**EASTE1C LEBIM1C NORTA1C
TUMGA1C WILLA1C**

TABULAR DESCRIPTION (1)

RNAV RWY19/20L/20R											
Serial Number	Path Descriptor	Waypoint Identifier	Flyover	Course ° M (° T)	Magnetic Variation	Distance (NM)	Turn Direction	Altitude (FT)	Speed (KT)	VPA/TCH	Navigation Specification
EASTE1C											
TRANSITION RUKSA FROM Y13											
010	IF	RUKSA	-	-	+ 0.6	-	-	-	-	-	RNAV 1
020	TF	EASTE	-	248°(247.7°)	+ 0.6	39.9	-	-FL180	-280	-	RNAV 1
TRANSITION UBL0D FROM Y1, Y2											
010	IF	UBL0D	-	-	+ 0.6	-	-	-	-	-	RNAV 1
020	TF	EASTE	-	206°(205.2°)	+ 0.6	20.6	-	-FL180	-280	-	RNAV 1
010	IF	EASTE	-	-	+ 0.6	-	-	-FL180	-280	-	RNAV 1
020	TF	SOVKI	-	220°(219.7°)	+ 0.6	19.5	-	-FL140; +11000	-250	-	RNAV 1
030	TF	TERIB	-	196°(195.0°)	+ 0.6	5.7	-	-	-	-	RNAV 1
040	TF	BS507	-	196°(195.0°)	+ 0.6	5.1	-	-	-	-	RNAV 1
050	TF	BS505	-	196°(195.0°)	+ 0.6	4.9	-	-	-	-	RNAV 1
060	TF	MUMUP	-	286°(285.0°)	+ 0.6	7.0	-	-	-220	-	RNAV 1
070	TF	BS501	-	016°(015.0°)	+ 0.6	5.0	-	-	-	-	RNAV 1
080	TF	ESGEN	-	016°(015.0°)	+ 0.6	5.0	-	+5000	-	-	RNAV 1
090	VM	-	-	015°(-)	+ 0.6	-	-	-	-	-	RNAV 1

**STANDARD ARRIVAL CHART -
INSTRUMENT (STAR) - ICAO**

**BANGKOK/Suvarnabhumi Intl (VTBS)
RNAV RWY19/20L/20R**

**EASTE1C LEBIM1C NORTA1C
TUMGA1C WILLA1C**

TABULAR DESCRIPTION (2)

RNAV RWY19/20L/20R											
Serial Number	Path Descriptor	Waypoint Identifier	Flyover	Course ° M (° T)	Magnetic Variation	Distance (NM)	Turn Direction	Altitude (FT)	Speed (KT)	VPA/TCH	Navigation Specification
LEBIM1C											
TRANSITION GUTSO FROM A464/M751/W19											
010	IF	GUTSO	-	-	+ 0.6	-	-	-	-	-	RNAV 1
020	TF	LEBIM	-	340°(339.4°)	+ 0.6	18.0	-	-FL180	-280	-	RNAV 1
TRANSITION HOTEL FROM G458, W31, Y99											
010	IF	HOTEL	-	-	+ 0.6	-	-	-	-	-	RNAV 1
020	TF	LEBIM	-	059°(058.6°)	+ 0.6	9.8	-	-FL180	-280	-	RNAV 1
TRANSITION SURMA FROM M769/Y98, W42/Y5											
010	IF	SURMA	-	-	+ 0.6	-	-	-	-	-	RNAV 1
020	TF	LEBIM	-	002°(001.4°)	+ 0.6	73.6	-	-FL180	-280	-	RNAV 1
010	IF	LEBIM	-	-	+ 0.6	-	-	-FL180	-280	-	RNAV 1
020	TF	SAGAP	-	036°(035.3°)	+ 0.6	13.2	-	-FL140	-	-	RNAV 1
030	TF	BS521	-	036°(035.3°)	+ 0.6	11.3	-	+11000	-	-	RNAV 1
040	TF	DUDER	-	036°(035.3°)	+ 0.6	9.5	-	-	-250	-	RNAV 1
050	IF	BS520	-	016°(015.0°)	+ 0.6	4.6	-	-11000; +9000	-	-	RNAV 1
060	TF	MUMUP	-	016°(015.0°)	+ 0.6	12.9	-	-	-220	-	RNAV 1
070	TF	BS501	-	016°(015.0°)	+ 0.6	5.0	-	-	-	-	RNAV 1
080	TF	ESGEN	-	016°(015.0°)	+ 0.6	5.0	-	+5000	-	-	RNAV 1
090	VM	-	-	015°(-)	+ 0.6	-	-	-	-	-	RNAV 1

**STANDARD ARRIVAL CHART -
INSTRUMENT (STAR) - ICAO**

**BANGKOK/Suvarnabhumi Intl (VTBS)
RNAV RWY19/20L/20R**

**EASTE1C LEBIM1C NORTA1C
TUMGA1C WILLA1C**

TABULAR DESCRIPTION (3)

RNAV RWY19/20L/20R											
Serial Number	Path Descriptor	Waypoint Identifier	Flyover	Course ° M (° T)	Magnetic Variation	Distance (NM)	Turn Direction	Altitude (FT)	Speed (KT)	VPA/TCH	Navigation Specification
NORTA1C											
TRANSITION ALBOS FROM R474											
010	IF	ALBOS	-	-	+ 0.6	-	-	-	-	-	RNAV 1
020	TF	NORTA	-	267°(266.1°)	+ 0.6	22.7	-	-FL180	-280	-	RNAV 1
TRANSITION NOBER FROM B346/W39, W21											
010	IF	NOBER	-	-	+ 0.6	-	-	-	-	-	RNAV 1
020	TF	NORTA	-	184°(182.9°)	+ 0.6	33.4	-	-FL180	-280	-	RNAV 1
TRANSITION SEMBO FROM A464											
010	IF	SEMBO	-	-	+ 0.6	-	-	-	-	-	RNAV 1
020	TF	NORTA	-	117°(116.3°)	+ 0.6	24.4	-	-FL180	-280	-	RNAV 1
TRANSITION BLAFF FROM W9/Y28, Y7											
010	IF	BLAFF	-	-	+ 0.6	-	-	-	-	-	RNAV 1
020	TF	NORTA	-	150°(149.2°)	+ 0.6	38.7	-	-FL180	-280	-	RNAV 1
010	IF	NORTA	-	-	+ 0.6	-	-	-FL180	-280	-	RNAV 1
020	TF	BS519	-	164°(163.3°)	+ 0.6	8.9	-	+FL160	-	-	RNAV 1
030	TF	BS518	-	164°(163.3°)	+ 0.6	8.1	-	-	-250	-	RNAV 1
040	TF	MEPIN	-	195°(194.4°)	+ 0.6	12.1	-	+11000	-	-	RNAV 1
050	TF	BS515	-	195°(194.4°)	+ 0.6	15.9	-	+9000	-220	-	RNAV 1
060	TF	BS514	-	106°(105.0°)	+ 0.6	7.0	-	-	-	-	RNAV 1
070	TF	ATKIN	-	015°(014.5°)	+ 0.6	5.0	-	+6000	-	-	RNAV 1
080	VM	-	-	015°(-)	+ 0.6	-	-	-	-	-	RNAV 1

CHANGE: BLAFF ADDED.

**STANDARD ARRIVAL CHART -
INSTRUMENT (STAR) - ICAO**

**BANGKOK/Suvarnabhumi Intl (VTBS)
RNAV RWY19/20L/20R**

**EASTE1C LEBIM1C NORTA1C
TUMGA1C WILLA1C**

TABULAR DESCRIPTION (4)

RNAV RWY19/20L/20R											
Serial Number	Path Descriptor	Waypoint Identifier	Flyover	Course ° M (° T)	Magnetic Variation	Distance (NM)	Turn Direction	Altitude (FT)	Speed (KT)	VPA/TCH	Navigation Specification
TUMGA1C											
TRANSITION ALEMI FROM Y12											
010	IF	ALEMI	-	-	+ 0.6	-	-	-	-	-	RNAV 1
020	TF	TUMGA	-	344°(343.1°)	+ 0.6	46.7	-	-FL180	-280	-	RNAV 1
TRANSITION ANREN FROM G474, L880											
010	IF	ANREN	-	-	+ 0.6	-	-	-	-	-	RNAV 1
020	TF	GOMES	-	237°(236.7°)	+ 0.6	50.8	-	-	-	-	RNAV 1
030	TF	TUMGA	-	263°(262.8°)	+ 0.6	22.6	-	-FL180	-280	-	RNAV 1
TRANSITION BUT FROM M904/Y11											
010	IF	BUT	-	-	+ 0.6	-	-	-	-	-	RNAV 1
020	TF	TUMGA	-	017°(015.9°)	+ 0.6	42.7	-	-FL180	-280	-	RNAV 1
TRANSITION DULEM FROM M633											
010	IF	DULEM	-	-	+ 0.6	-	-	-	-	-	RNAV 1
020	TF	GOMES	-	243°(242.2°)	+ 0.6	42.9	-	-	-	-	RNAV 1
030	TF	TUMGA	-	263°(262.8°)	+ 0.6	22.6	-	-FL180	-280	-	RNAV 1
TRANSITION GOMES FROM R468/N506											
010	IF	GOMES	-	-	+ 0.6	-	-	-	-	-	RNAV 1
020	TF	TUMGA	-	263°(262.8°)	+ 0.6	22.6	-	-FL180	-280	-	RNAV 1
TRANSITION NUGPA FROM P629											
010	IF	NUGPA	-	-	+ 0.6	-	-	-	-	-	RNAV 1
020	TF	TUMGA	-	297°(296.4°)	+ 0.6	41.3	-	-FL180	-280	-	RNAV 1
TRANSITION RYN FROM N891											
010	IF	RYN	-	-	+ 0.6	-	-	-	-	-	RNAV 1
020	TF	TUMGA	-	321°(320.9°)	+ 0.6	44.2	-	-FL180	-280	-	RNAV 1

**STANDARD ARRIVAL CHART -
INSTRUMENT (STAR) - ICAO**

**BANGKOK/Suvarnabhumi Intl (VTBS)
RNAV RWY19/20L/20R**

EASTE1C LEBIM1C NORTA1C
TUMGA1C WILLA1C

TABULAR DESCRIPTION (5)

RNAV RWY19/20L/20R

Serial Number	Path Descriptor	Waypoint Identifier	Flyover	Course ° M (° T)	Magnetic Variation	Distance (NM)	Turn Direction	Altitude (FT)	Speed (KT)	VPA/ TCH	Navigation Specification
---------------	-----------------	---------------------	---------	------------------	--------------------	---------------	----------------	---------------	------------	----------	--------------------------

TUMGA1C

010	IF	TUMGA	-	-	+ 0.6	-	-	-FL180	-280	-	RNAV 1
020	TF	ISRAM	-	283°(282.1°)	+ 0.6	18.2	-	+11000	-	-	RNAV 1
030	TF	DUDER	-	328°(327.3°)	+ 0.6	9.5	-	-	-250	-	RNAV 1
040	TF	BS520	-	016°(015.0°)	+ 0.6	4.6	-	-11000; +9000	-	-	RNAV 1
050	TF	MUMUP	-	016°(015.0°)	+ 0.6	12.9	-	-	-220	-	RNAV 1
060	TF	BS501	-	016°(015.0°)	+ 0.6	5.0	-	-	-	-	RNAV 1
070	TF	ESGEN	-	016°(015.0°)	+ 0.6	5.0	-	+5000	-	-	RNAV 1
080	VM	-	-	015°(-)	+ 0.6	-	-	-	-	-	RNAV 1

**STANDARD ARRIVAL CHART -
INSTRUMENT (STAR) - ICAO**

**BANGKOK/Suvarnabhumi Intl (VTBS)
RNAV RWY19/20L/20R**

**EASTE1C LEBIM1C NORTA1C
TUMGA1C WILLA1C**

TABULAR DESCRIPTION (6)

RNAV RWY19/20L/20R											
Serial Number	Path Descriptor	Waypoint Identifier	Flyover	Course ° M (° T)	Magnetic Variation	Distance (NM)	Turn Direction	Altitude (FT)	Speed (KT)	VPA/TCH	Navigation Specification
WILLA1C											
TRANSITION BONVO FROM M502											
010	IF	BONVO	-	-	+ 0.6	-	-	-	-	-	RNAV 1
020	TF	WILLA	-	024°(023.0°)	+ 0.6	43.4	-	-FL180	-280	-	RNAV 1
TRANSITION IBETO FROM L524											
010	IF	IBETO	-	-	+ 0.6	-	-	-	-	-	RNAV 1
020	TF	WILLA	-	068°(067.4°)	+ 0.6	35.6	-	-FL180	-280	-	RNAV 1
TRANSITION IGONI FROM L507											
010	IF	IGONI	-	-	+ 0.6	-	-	-	-	-	RNAV 1
020	TF	WILLA	-	105°(104.3°)	+ 0.6	9.1	-	-FL220	-280	-	RNAV 1
TRANSITION TARED FROM G463/P646											
010	IF	TARED	-	-	+ 0.6	-	-	-	-	-	RNAV 1
020	TF	WILLA	-	094°(093.7°)	+ 0.6	31.2	-	-FL180	-280	-	RNAV 1
010	IF	WILLA	-	-	+ 0.6	-	-	-FL180	-280	-	RNAV 1
020	TF	BAROK	-	105°(104.4°)	+ 0.6	7.9	-	-	-	-	RNAV 1
030	TF	BS517	-	105°(104.4°)	+ 0.6	8.9	-	-FL150; +FL140	-	-	RNAV 1
040	TF	BS516	-	105°(104.4°)	+ 0.6	7.9	-	-	-250	-	RNAV 1
050	TF	MEPIN	-	105°(104.5°)	+ 0.6	12.1	-	+11000	-	-	RNAV 1
060	TF	BS515	-	195°(194.4°)	+ 0.6	15.9	-	+9000	-220	-	RNAV 1
070	TF	BS514	-	106°(105.0°)	+ 0.6	7.0	-	-	-	-	RNAV 1
080	TF	ATKIN	-	015°(014.5°)	+ 0.6	5.0	-	+6000	-	-	RNAV 1
090	VM	-	-	015°(-)	+ 0.6	-	-	-	-	-	RNAV 1

WAYPOINT LIST

RNAV RWY19/20L/20R		RNAV RWY19/20L/20R	
Waypoint Identifier	Coordinates	Waypoint Identifier	Coordinates
ALBOS	14° 44' 41.70" N 101° 01' 41.90" E	GOMES	13° 24' 06.10" N 101° 35' 05.70" E
ALEMI	12° 36' 25.55" N 101° 25' 59.92" E	GUTSO	12° 48' 19.94" N 100° 34' 54.30" E
ANREN	13° 52' 12.48" N 102° 18' 37.95" E	HOTEL	13° 00' 06.20" N 100° 19' 48.30" E
ATKIN	14° 02' 40.10" N 100° 44' 26.59" E	IBETO	14° 10' 36.14" N 099° 29' 45.68" E
BAROK	14° 22' 18.30" N 100° 11' 30.61" E	IGONI	14° 26' 32.73" N 099° 54' 30.29" E
BLAFF	15° 16' 33.45" N 100° 17' 51.11" E	ISRAM	13° 25' 04.96" N 100° 53' 48.03" E
BONVO	13° 44' 10.47" N 099° 46' 06.72" E	LEBIM	13° 05' 14.81" N 100° 28' 24.51" E
BS501	13° 54' 49.86" N 100° 54' 30.27" E	MEPIN	14° 15' 05.00" N 100° 40' 16.00" E
BS505	13° 48' 13.24" N 101° 00' 08.22" E	MUMUP	13° 50' 02.27" N 100° 53' 11.48" E
BS507	13° 53' 00.98" N 101° 01' 27.19" E	NOBER	15° 16' 35.60" N 100° 40' 06.00" E
BS514	13° 57' 48.41" N 100° 43' 09.29" E	NORTA	14° 43' 07.64" N 100° 38' 20.46" E
BS515	13° 59' 37.52" N 100° 36' 12.01" E	NUGPA	13° 02' 54.16" N 101° 49' 59.29" E
BS516	14° 18' 06.73" N 100° 28' 14.21" E	RUKSA	14° 33' 51.00" N 101° 55' 12.34" E
BS517	14° 20' 05.55" N 100° 20' 20.83" E	RYN	12° 46' 48.30" N 101° 40' 41.70" E
BS518	14° 26' 49.05" N 100° 43' 21.68" E	SAGAP	13° 16' 02.07" N 100° 36' 12.59" E
BS519	14° 34' 36.53" N 100° 40' 57.86" E	SEMBO	14° 53' 59.16" N 100° 15' 47.92" E
BS520	13° 37' 30.82" N 100° 49' 45.63" E	SOVKI	14° 03' 29.32" N 101° 04' 19.78" E
BS521	13° 25' 19.78" N 100° 42' 55.54" E	SURMA	11° 51' 22.45" N 100° 26' 32.65" E
BUT	12° 40' 00.02" N 101° 00' 01.71" E	TARED	14° 26' 19.52" N 099° 31' 28.87" E
DUDER	13° 33' 05.42" N 100° 48' 33.04" E	TERIB	13° 57' 57.63" N 101° 02' 48.61" E
DULEM	13° 44' 15.58" N 102° 13' 59.75" E	TUMGA	13° 21' 15.01" N 101° 12' 03.77" E
EASTE	14° 18' 34.80" N 101° 17' 10.48" E	UBLOD	14° 37' 15.43" N 101° 26' 11.66" E
ESGEN	13° 59' 46.52" N 100° 55' 51.74" E	WILLA	14° 24' 16.98" N 100° 03' 35.36" E