

VTCH AD 2.1 AERODROME LOCATION INDICATOR AND NAME

VTCH - MAE HONG SON / MAE HONG SON AIRPORT

VTCH AD 2.2 AERODROME GEOGRAPHICAL AND ADMINISTRATIVE DATA

1	ARP coordinates and site at AD	191806.18N 0975830.20E
2	Direction and distance from (city)	2 KM NE, from city
3	Elevation/Reference temperature	929 FT/30°C
4	Geoid Undulation at AD ELEV PSN	NIL
5	MAG VAR/Annual change	0.75°W (2016)/0.01°E
6	AD Administration, address, telephone, telefax, telex, AFS	Director of Mae Hong Son Airport Mae Hong Son Airports Niwet Pisan Road Amphoe Muang Mae Hong Son 58000 Thailand Tel: +665 361 2057 +665 361 1499 Fax: +665 361 1499 AFS: VTCHYDYX
7	Types of traffic permitted (IFR/VFR)	IFR/VFR
8	Remarks	Operator: Department of Airports

VTCH AD 2.3 OPERATIONAL HOURS

1	Aerodrome Operator	2300-1100
2	Customs and immigration	On request
3	Health and sanitation	On request
4	AIS Briefing Office	NIL
5	ATS Reporting Office (ARO)	2300-1100
6	MET Briefing Office	NIL
7	ATS	2300-1100
8	Fuelling	NIL
9	Handling	NIL
10	Security	NIL
11	De-icing	NIL
12	Remarks	ATS Reporting Office (ARO): Located at Chiang Mai Air Traffic Control Centre (1st floor of tower building) Tel: +669 1818 5798 Fax: +665 327 7897

VTCH AD 2.4 HANDLING SERVICES AND FACILITIES

1	Cargo-handling facilities	NIL
2	Fuel/oil types	NIL
3	Fuelling facilities/capacity	NIL
4	De-icing facilities	NIL
5	Hangar space for visiting aircraft	NIL
6	Repair facilities for visiting aircraft	NIL
7	Remarks	NIL

VTCH AD 2.5 PASSENGER FACILITIES

1	Hotels	In the city
2	Restaurants	In the city
3	Transportation	Taxis
4	Medical facilities	NIL
5	Bank and Post Office	NIL
6	Tourist Office	NIL
7	Remarks	NIL

VTCH AD 2.6 RESCUE AND FIRE FIGHTING SERVICES

1	AD category for fire fighting	Category 6
2	Rescue equipment	Yes
3	Capability for removal of disabled aircraft	NIL
4	Remarks	NIL

VTCH AD 2.7 SEASONAL AVAILABILITY - CLEARING

1	Types of clearing equipment	NIL
2	Clearance priorities	NIL
3	Remarks	The aerodrome is available all seasons.

VTCH AD 2.8 APRONS, TAXIWAYS AND CHECK LOCATIONS/POSITIONS DATA

1	Apron surface and strength	Surface: Asphalt Strength: PCN 41/F/C/X/T (Apron 1) Surface: Concrete Strength: PCN 45/R/C/X/T (Apron 2)
2	Taxiway width, surface and strength	Taxiway A Width: 17.5 M Surface: Asphalt Strength: PCN 41/F/C/X/T Taxiway B Width: 20 M Surface: Asphalt Strength: PCN 41 F/C/X/T Taxiway C Width: 20 M Surface: Asphalt Strength: PCN 41 F/C/X/T

3	Altimeter checkpoint location and elevation	Location: At Apron Elevation: 270.616 M (887.85 FT)
4	VOR checkpoints	NIL
5	INS checkpoints	NIL
6	Remarks	NIL

VTCH AD 2.9 SURFACE MOVEMENT GUIDANCE AND CONTROL SYSTEM AND MARKINGS

1	Use of aircraft stand ID signs, TWY guide lines and visual docking/parking guidance system of aircraft stands	Taxiway centre-line are painted in yellow and illuminated guidance signs are provided at various intersections. TWY edge and TWY holding position are provided. Guide lines at apron.
2	RWY and TWY markings and LGT	RWY and TWY Marked and lighted
3	Stop bars	NIL
4	Remarks	NIL

VTCH AD 2.10 AERODROME OBSTACLES

In approach/TKOF areas			In circling areas and at AD		Remarks
1			2		3
RWY/Area affected	Obstacle type Elevation Markings/LGT	Coordinates	Obstacle type Elevation Markings/LGT	Coordinates	-
a	b	c	a	b	
RWY11/ Approach area	DVOR/DME 1814 FT (553 M) Paint red/white LGTD	191911.11N 0975443.63E	AWOS 960 FT (293 M) Paint red/white LGTD	191756.47N 0975852.13E	NIL
RWY11/ Approach area	Radar 1694 FT (516 M) Paint red/white NIL	191917.72N 0975457.91E	AWOS 956 FT (291 M) Paint red/white LGTD	191756.42N 0975852.33E	NIL
RWY11/ Approach area	Monitor pole 1819 FT (555 M) Paint red/white NIL	191913.03N 0975440.58E	Tree 965 FT (294 M) NIL/NIL	191758.39N 0975843.12E	NIL
RWY29/ Approach area	Mountain 4423 FT (1348 M) NIL/NIL	191742.82N 0980225.29E	Tree 975 FT (297 M) NIL/NIL	191758.09N 0975841.50E	NIL
			Tree 1058 FT (322 M) NIL/NIL	191752.72N 0975908.58E	NIL
			Tree 955 FT (291 M) NIL/NIL	191813.95N 0975827.71E	NIL
			Tree 1036 FT (316 M) NIL/NIL	191812.76N 0975731.75E	NIL
			Tree 1001 FT (305 M) NIL/NIL	191814.01N 0975816.66E	NIL
			Water tank 1001 FT (305 M) NIL/NIL	191818.95N 0975817.69E	NIL

In approach/TKOF areas			In circling areas and at AD		Remarks
1			2		3
RWY/Area affected	Obstacle type Elevation Markings/LGT	Coordinates	Obstacle type Elevation Markings/LGT	Coordinates	-
a	b	c	a	b	
			Mountain 4682 FT (1427 M) NIL/NIL	191549.49N 0980157.50E	NIL
			Radar (MET station) 981 FT (299 M) Painted red/white Red LGT on top	191800.47N 0975831.60E	NIL
			Radio mast 1546 FT (471 M) Paint red/white LGTD	191751.41N 0975728.50E	NIL
			Radio mast 1056 FT (322 M) Paint red/white LGTD	191815.41N 0975839.13E	NIL
			Radio mast 1126 FT (343 M) Paint red/white NIL	191818.40N 0975845.44E	NIL
			Radio mast 1045 FT (318 M) Painted red/white NIL	191724.62N 0975755.20E	NIL
			Electricity pole 1002 FT (306 M) NIL/NIL	191756.81N 0975909.22E	NIL
			Radio mast 1515 FT (462 M) Paint red/white LGTD	191756.10N 0975731.88E	NIL
			Radio mast 1553 FT (473 M) Paint red/white LGTD	191757.05N 0975732.24E	NIL
			Radio mast 1176 FT (358 M) Paint red/white LGTD	191721.62N 0975934.05E	NIL
			Apron flood light pole 971 FT (296 M) Paint red/white LGTD	191803.35N 0975824.07E	NIL
			Apron flood light pole 973 FT (297 M) Paint red/white LGTD	191802.39N 0975827.20E	NIL
			Apron flood light pole 976 FT (297 M) Paint red/white LGTD	191801.40N 0975830.42E	NIL

In approach/TKOF areas			In circling areas and at AD		Remarks
1			2		3
RWY/Area affected	Obstacle type Elevation Markings/LGT	Coordinates	Obstacle type Elevation Markings/LGT	Coordinates	-
a	b	c	a	b	
			Apron flood light pole 978 FT (298 M) Paint red/white LGTD	191800.49N 0975833.35E	NIL
			Lightning rod of building 998 FT (304 M) Paint red/white LGTD	191759.88N 0975831.67E	NIL
			ATC tower (Old) 968 FT (295 M) Paint red/white NIL	191801.84N 0975827.08E	NIL
			ATC tower 1007 FT (307 M) Paint red/white LGTD	191800.60N 0975829.25E	NIL

VTCH AD 2.11 METEOROLOGICAL INFORMATION PROVIDED

1	Associated MET Office	Aeronautical Meteorological Station-Mae Hong Son, Northern Meteorological Center, Thai Meteorological Department (TMD)
2	Hours of service MET Office outside hours	2200-1100 NIL
3	Office responsible for TAF preparation Periods of validity	Supply TAF from Northern Meteorological Center 24 HR
4	Type of landing forecast Interval of issuance	TREND 1 HR
5	Briefing/consultation provided	Personal Consultation Tel: +665 361 2903 ext. 4210
6	Flight documentation Language(s) used	NIL
7	Charts and other information available for briefing or consultation	S, U85, Daily Weather Forecast, satellite and radar images
8	Supplementary equipment available for providing information	Automated Weather Observation System (AWOS), Weather Radar
9	ATS units provided with information	Mae Hong Son TWR
10	Additional information (limitation of service, etc.)	NIL

VTCH AD 2.12 RUNWAY PHYSICAL CHARACTERISTICS

Designations RWY NR	TRUE BRG	Dimensions of RWY(M)	Strength (PCN) and surface of RWY and SWY	THR coordinates RWY end coordinates THR geoid undulation	THR elevation and highest elevation of TDZ of precision APP RWY
1	2	3	4	5	6
11	108.75°	2000x30	PCN 41/F/C/X/T Asphalt	191815.29N 0975800.56E	THR 865 FT TDZ 872 FT
29	288.75°	2000x30	PCN 41/F/C/X/T Asphalt	191755.28N 0975905.72E	THR 929 FT TDZ 929 FT

Slope of RWY-SWY	SWY dimensions (M)	CWY dimensions (M)	Strip dimensions (M)	OFZ	Remarks
7	8	9	10	11	12
NIL	NIL	NIL	2060x80	NIL	NIL
NIL	NIL	NIL	2060x80	NIL	NIL

VTCH AD 2.13 DECLARED DISTANCES

RWY Designator	TORA (M)	TODA (M)	ASDA (M)	LDA (M)	Remarks
1	2	3	4	5	6
11	NIL	NIL	NIL	1850	NIL
29	1910	1910	1910	NIL	NIL

VTCH AD 2.14 APPROACH AND RUNWAY LIGHTING

RWY Designator	APCH LGT type LEN INTST	THR LGT colour WBAR	VASIS (MEHT) PAPI	TDZ, LGT LEN	RWY Centre Line LGT Length, spacing, colour, INTST	RWY edge LGT LEN, spacing, colour INTST	RWY End LGT colour WBAR	SWY LGT LEN (M) colour	Remarks
1	2	3	4	5	6	7	8	9	10
11	NIL	Green NIL	PAPI Both 3° (44.63 FT)	NIL	NIL	2000 M 50 M FM 0 M - 1400 M White, FM 1400 M - 2000 M Yellow, LIH	Red NIL	NIL	RTIL
29	NIL	NIL	NIL	NIL	NIL	2000 M 50 M FM 0 M - 1400 M White, Yellow, LIH	Red NIL	NIL	NIL

VTCH AD 2.15 OTHER LIGHTING, SECONDARY POWER SUPPLY

1	ABN/IBN location, characteristics and hours of operation	ABN: At Tower Building FLG W G EV 3 SEC
2	LDI location and LGT Anemometer location and LGT	LDI: NIL Anemometer: NIL WDI: 1. Wind cone at 145 M from THR 11 offset to the side 60 M from RCL, illuminated 2. Wind cone at 800 M from THR 29 offset to the side 95.5 M from RCL, illuminated
3	TWY edge and centre line lighting	TWY edge: All TWY TWY centre line: NIL
4	Secondary power supply/switch-over time	Secondary power supply to all lighting at the airfield lighting (AFL) building. Switch-over time: 15 SEC
5	Remarks	NIL

VTCH AD 2.16 HELICOPTER LANDING AREA

1	Coordinates TLOF or THR of FATO Geoid undulation	NIL
2	TLOF and/or FATO elevation M/FT	NIL
3	TLOF and FATO area dimensions, surface, strength, marking	NIL
4	True and MAG BRG of FATO	NIL
5	Declared distance available	NIL
6	APP and FATO lighting	NIL
7	Remarks	NIL

VTCH AD 2.17 ATS AIRSPACE

1	Designation and lateral limits	A circle of 5 NM radius centred on MHS DVOR/DME (191910.73N 0975443.50E). Excluding the Myanmar territory.
2	Vertical limits	2000 FT/AGL
3	Airspace classification	D
4	ATS unit call sign Language(s)	Mae Hong Son Tower English, Thai
5	Transition altitude	11000 FT
6	Remarks	NIL

VTCH AD 2.18 ATS COMMUNICATION FACILITIES

Service designation	Call sign	Frequency	Hours of operation	Remarks
1	2	3	4	5
APP	Mae Hong Son Approach	126.2 MHZ 121.5 MHZ ¹⁾	As AD OPR HR	¹⁾ Emergency frequency
TWR	Mae Hong Son Tower	122.3 MHZ 236.6 MHZ 121.5 MHZ ¹⁾	As AD OPR HR	
ATIS	Mae Hong Son Airport	384 KHZ	As AD OPR HR	

VTCH AD 2.19 RADIO NAVIGATION AND LANDING AIDS

Type of aid, MAG VAR CAT of ILS/MLS (For VOR/ILS/ MLS, give declination)	ID	Frequency	Hours of operation	Position of transmitting antenna coordinates	Elevation of DME transmitting antenna	Remarks
1	2	3	4	5	6	7
NDB	MH	384 KHZ	H24	191755.84N 0975830.59E	NIL	<ol style="list-style-type: none"> Data refer to commissioning checked as follows: <ol style="list-style-type: none"> 40 NM orbit flown from bearing 071°-180° clockwise orbit at altitude 8 500 FT. Result found satisfactory. Bearing 181°-070° clockwise unable to performed due to border limited. Facility performance classified as "Restricted" due to item b) above as per commissioning checked.
DVOR/DME	MHS	115.5 MHZ CH102X	H24	191911.1N 0975443.6E		<p>DVOR/DME restrictions,</p> <ol style="list-style-type: none"> Unusable due to roughness out of tolerance <ul style="list-style-type: none"> Radial 040° distance between 10.5-12.5 DME altitude 5 500 FT Radial 085° distance between 5.5-7.5 DME altitude 7 000 FT Radial 100° distance between 9.0-10.0 DME altitude 7 000 FT Radial 120° distance between 9.5 - 10.5 DME altitude 7 500 FT Due to mountainous terrain surround DVOR/DME station, coverage check does not provide adequate signal to 40 NM at the required altitude in various areas as follows: <ul style="list-style-type: none"> Radial 060°-080° altitude should not below 8 500 FT Radial 081°-140° altitude should not below 13 000 FT Radial 141°-190° altitude should not below 9 000 FT Radial 191°-059° unable to perform due to border limited

VTCH AD 2.20 LOCAL AERODROME REGULATIONS

1. The declared distances of Runway 11/29 at Mae Hong Son Airport are as indicated below:

RWY	TORA	TODA	ASDA	LDA
11	NIL	NIL	NIL	1850
29	1910	1910	1910	NIL

1.1 Aircraft landing on RWY 11 shall stop before 150 meters from the threshold of RWY29.

1.2 Aircraft taking off from RWY 29 shall be airborne before 150 meters from the threshold of RWY 11.

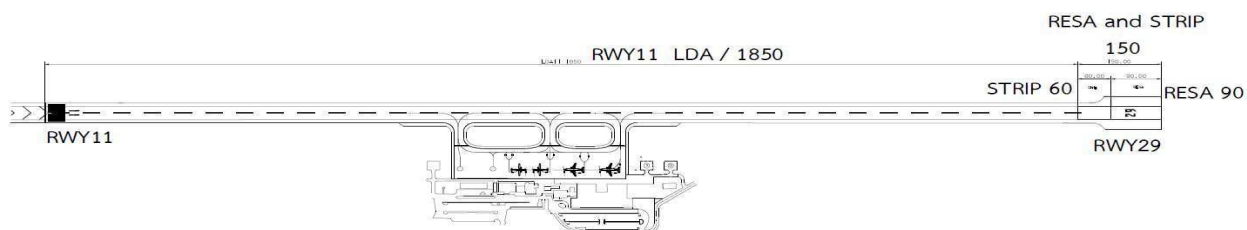
1.3 All Code C aircraft are not allowed to make a 180-degree turn on the runway, but shall make the turn on the turn pad at the threshold of RWY 29 before takeoff.

2. The local aerodrome regulations for airlines operating ATR72 aircraft are as indicated below:

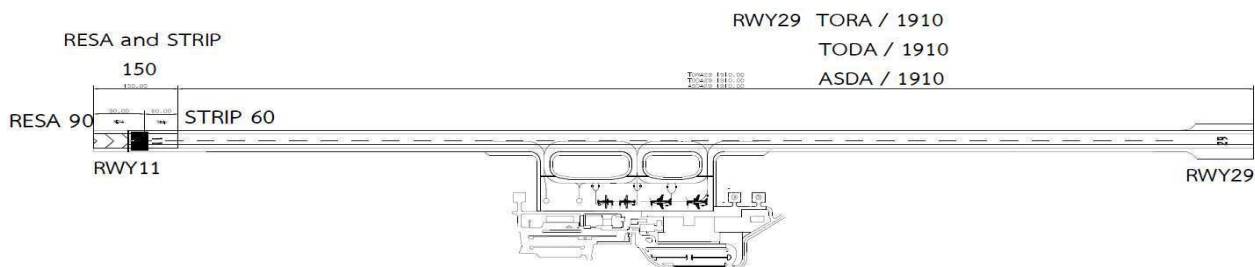
2.1 All ATR72 aircraft are not allowed to take off and land at the airport under conditions of low visibility, low aircraft performance or reduced aircraft directional control.

- 2.2 Pilots of ATR72 aircraft shall reduce the maximum crosswind by 10 knots (from 35 knots to 25 knots).
- 2.3 Pilots shall not conduct takeoff and landing operations if the runway surface has contaminants and its condition assessment is lower than GRF Code 3.
- 2.4 Pilots shall have training in flight simulator to operate at Mae Hong Son Airport.
- 2.5 Only the pilot- in- command shall conduct takeoff and landing operations at Mae Hong Son Airport.
- 2.6 Pilots shall check the actual takeoff wind and temperature before takeoff in order to calculate the maximum speed and weight of aircraft in takeoff.
- 2.7 Pilots shall exercise caution when landing on RWY11 and only under good visibility conditions.
- 2.8 In the event that landing is not feasible, pilots shall execute a go-around procedure or divert to an alternate aerodrome.
- 3. **The chart related to the declared distances and local aerodrome regulations of Mae Hong Son Airport is attached herewith.**

DECLARED DISTANCES OF RUNWAY11/29 AND LOCAL AERODROME REGULATIONS OF MAE HONG SON AIRPORT
(not to scale)



DECLARED DISTANCES OF RUNWAY11/29 AND LOCAL AERODROME REGULATIONS OF MAE HONG SON AIRPORT
(Not to scale)



VTCH AD 2.21 NOISE ABATEMENT PROCEDURES

NIL

VTCH AD 2.22 FLIGHT PROCEDURES

NIL

VTCH AD 2.23 ADDITIONAL INFORMATION

NIL

VTCH AD 2.24 CHARTS RELATED TO AN AERODROME

Chart name	Page
Aerodrome Chart - ICAO	AD 2-VTCH-2-1
Standard Departure Chart - Instrument (SID) - ICAO - RNAV RWY 29 - BOKIB1L BOKIB1R DOMKA1L DOMKA1R	AD 2-VTCH-6-1
Standard Departure Chart - Instrument (SID) - ICAO - RNAV RWY 29 - BOKIB1L BOKIB1R DOMKA1L DOMKA1R (Tabular description)	AD 2-VTCH-6-2
Instrument Approach Chart - ICAO - RNP a RWY 11	AD 2-VTCH-8-1
Instrument Approach Chart - ICAO - RNP a RWY 11 (Tabular description)	AD 2-VTCH-8-3

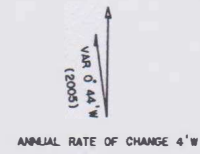
AERODROME CHART-ICAO

19° 18' 06" N
97° 58' 30" E
ELEV 929 ft
283 m

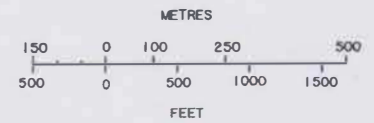
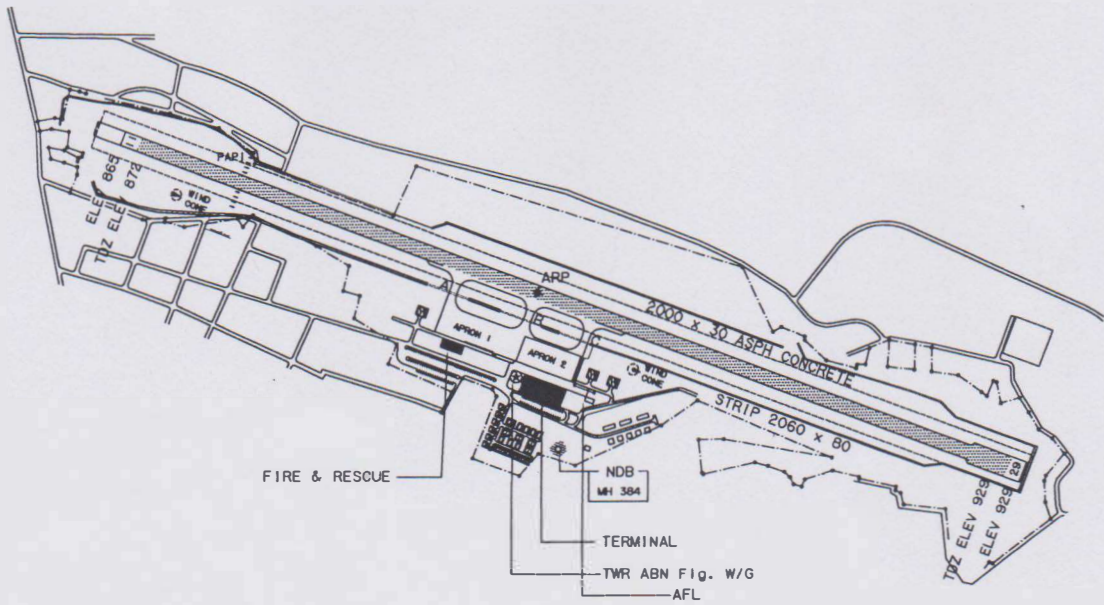
TWR 122.3
236.6

MAE HONG SON/Mae Hong Son

RWY	DIRECTION	THR	BEARING STRENGTH
11	108.26°	19° 18' 15.29" N 97° 58' 00.56" E	PCN 41/F/C/X/T
29	288.26°	19° 18' 55.28" N 97° 58' 05.72" E	
APRON 1			PCN 41/F/C/X/T
APRON 2			PCN 45/R/C/X/T



ELEVATIONS IN FEET AND DIMENSIONS IN METRES
BEARINGS ARE MAGNETIC



MARKING AIDS RWY 11/29 AND EXIT TWY



LIGHTING AIDS RWY 11/29 AND EXIT TWY



Remark : COORDINATE ARE WGS-84

INTENTIONALLY BLANK

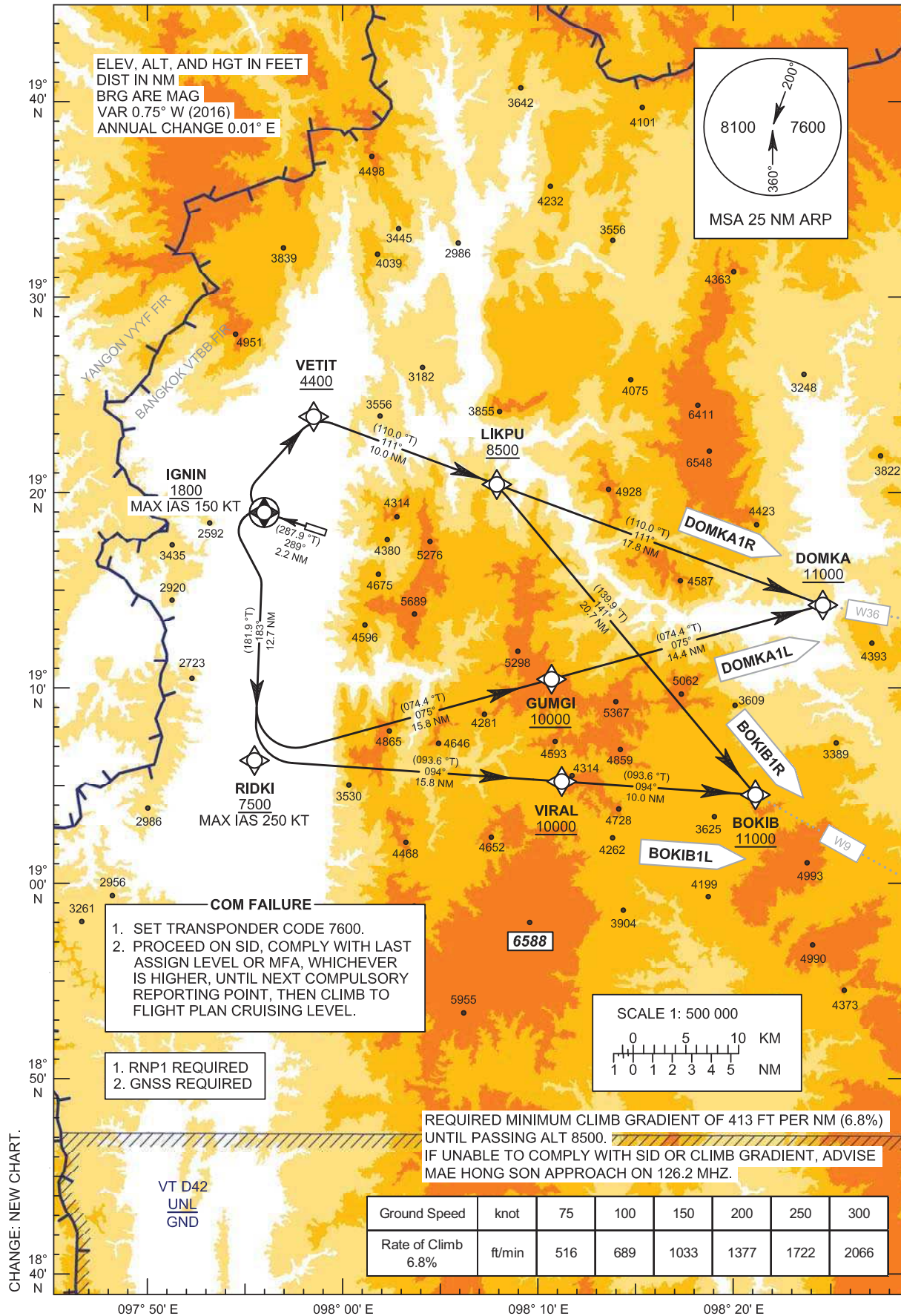
STANDARD DEPARTURE CHART-
INSTRUMENT (SID) - ICAO

TRANSITION ALTITUDE
11000 FT

APP : 126.2 MHZ
TWR : 122.3 , 236.6 MHZ
ATIS : 384 KHZ

MAE HONG SON / Mae Hong Son (VTCH)
RNAV RWY29

BOKIB1L BOKIB1R
DOMKA1L DOMKA1R



STANDARD DEPARTURE CHART-
INSTRUMENT (SID) - ICAO

MAE HONG SON / Mae Hong Son (VTCH)

RNAV RWY29

BOKIB1L BOKIB1R
DOMKA1L DOMKA1R

TABULAR DESCRIPTION

RNAV RWY29											
Serial Number	Path Descriptor	Waypoint Identifier	Flyover	Course °M (°T)	Magnetic Variation	Distance (NM)	Turn Direction	Altitude (FT)	Speed (KT)	VPA/TCH	Navigation Specification
010	-	DER RWY29	-	-	+0.71	-	-	-	-	-	RNP 1
020	CF	IGNIN	Y	289°(287.9°)	+0.71	2.2	L	+1800	-150	-	RNP 1
030	TF	RIDKI	-	183°(181.9°)	+0.71	12.7	L	+7500	-250	-	RNP 1
040	TF	VIRAL	-	094°(093.6°)	+0.71	15.8	-	+10000	-	-	RNP 1
050	TF	BOKIB	-	094°(093.6°)	+0.71	10.0	-	+11000	-	-	RNP 1
010	-	DER RWY29	-	-	+0.71	-	-	-	-	-	RNP 1
020	CF	IGNIN	Y	289°(287.9°)	+0.71	2.2	-	+1800	-150	-	RNP 1
030	DF	VETIT	-	-	+0.71	-	R	+4400	-	-	RNP 1
040	TF	LIKPU	-	111°(110.0°)	+0.71	10.0	R	+8500	-	-	RNP 1
050	TF	BOKIB	-	141°(139.9°)	+0.71	20.7	-	+11000	-	-	RNP 1
010	-	DER RWY29	-	-	+0.71	-	-	-	-	-	RNP 1
020	CF	IGNIN	Y	289°(287.9°)	+0.71	2.2	L	+1800	-150	-	RNP 1
030	TF	RIDKI	-	183°(181.9°)	+0.71	12.7	L	+7500	-250	-	RNP 1
040	TF	GUMGI	-	075°(074.4°)	+0.71	15.8	-	+10000	-	-	RNP 1
050	TF	DOMKA	-	075°(074.4°)	+0.71	14.4	-	+11000	-	-	RNP 1
010	-	DER RWY29	-	-	+0.71	-	-	-	-	-	RNP 1
020	CF	IGNIN	Y	289°(287.9°)	+0.71	2.2	-	+1800	-150	-	RNP 1
030	DF	VETIT	-	-	+0.71	-	R	+4400	-	-	RNP 1
040	TF	LIKPU	-	111°(110.0°)	+0.71	10.0	-	+8500	-	-	RNP 1
050	TF	DOMKA	-	111°(110.0°)	+0.71	17.8	-	+11000	-	-	RNP 1

WAYPOINT LIST

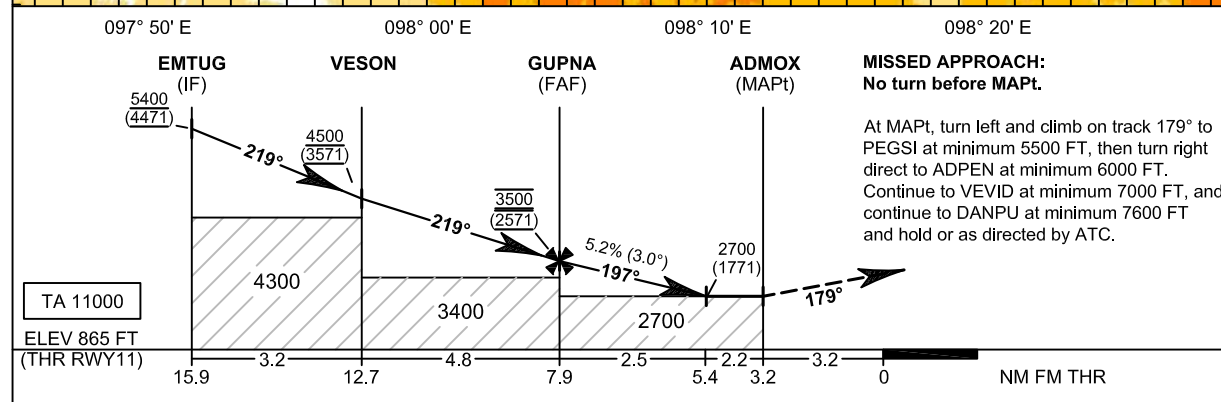
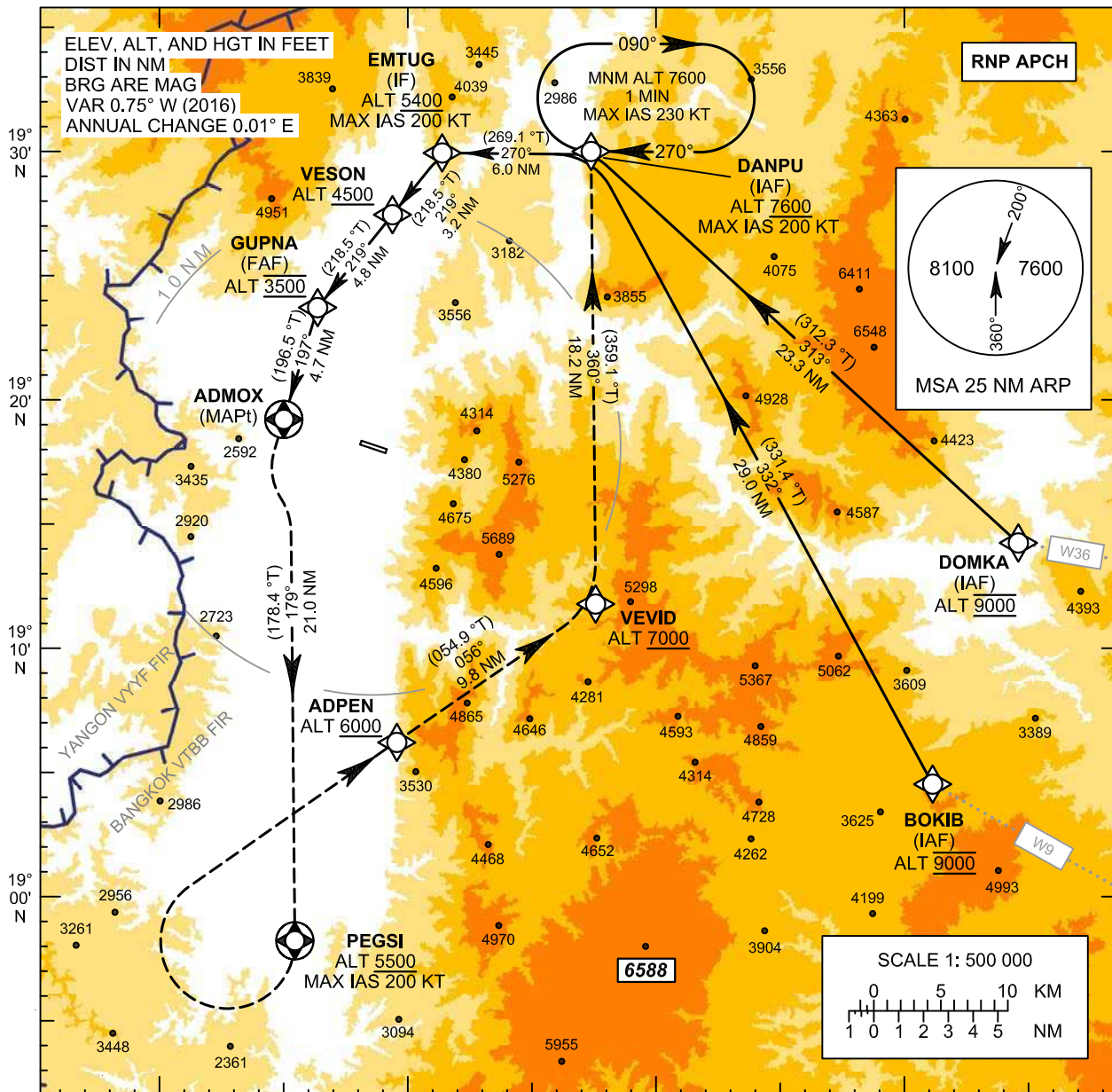
RNAV RWY29		
Waypoint Identifier	Coordinates	Pronunciation
DER RWY29	19° 18' 15.29" N 097° 58' 00.56" E	-
BOKIB	19° 04' 33.60" N 098° 22' 25.20" E	BO - KIB
DOMKA	19° 14' 19.38" N 098° 26' 01.88" E	DOM - KA
GUMGI	19° 10' 27.38" N 098° 11' 21.92" E	GUM - GI
IGNIN	19° 18' 56.58" N 097° 55' 46.03" E	IG - NIN
LIKPU	19° 20' 27.15" N 098° 08' 20.95" E	LIK - PU
RIDKI	19° 06' 12.00" N 097° 55' 19.20" E	RID - KI
VETIT	19° 23' 52.95" N 097° 58' 24.52" E	VIT - TIT
VIRAL	19° 05' 12.13" N 098° 11' 56.46" E	VI - RAL

**INSTRUMENT
APPROACH
CHART - ICAO**

**AERODROME ELEV 929 FT
HEIGHTS RELATED TO
AERODROME ELEV**

APP : 126.2 MHZ
TWR : 122.3 , 236.6 MHZ
ATIS : 384 KHZ

MAE HONG SON / Mae Hong Son (VTCH)
RNP a RWY11



CHANGE: CHART TITLE.

OCA/H	A	B	C	NM to NEXT WPT	FAF	7 NM	6 NM	5.4 NM			
LNAV	NOT AUTHORIZED			Altitude (Height)	3500 (2571)	3190 (2261)	2875 (1946)	2700 (1771)			
Circling (OCH AAL)	2700 (1771)			Ground Speed	knot	70	90	100	120	140	160
* FOR CIRCLING RESTRICTIONS SEE VERSO				Rate of Descent FAF-MAPt 5.2%	ft/min	369	474	527	632	737	843

INTENTIONALLY BLANK

**INSTRUMENT
APPROACH
CHART - ICAO**

**AERODROME ELEV 929 FT
HEIGHTS RELATED TO
AERODROME ELEV**

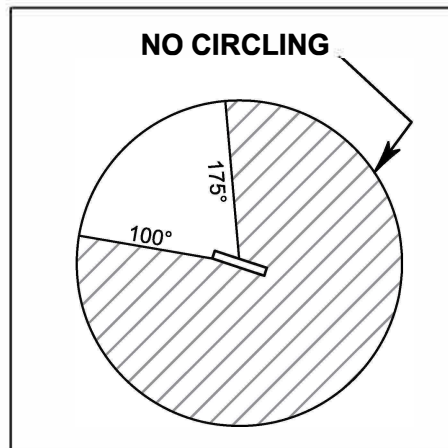
**MAE HONG SON / Mae Hong Son (VTCH)
RNP a RWY11**

TABULAR DESCRIPTION

RNP a RWY11											
Serial Number	Path Descriptor	Waypoint Identifier	Flyover	Course °M (°T)	Magnetic Variation	Distance (NM)	Turn Direction	Altitude (FT)	Speed (KT)	VPA/TCH	Navigation Specification
010	IF	BOKIB (IAF)	-	-	+0.71	-	-	@9000	-	-	RNP APCH
020	TF	DANPU	-	332°(331.4°)	+0.71	29.0	L	+7600	-200	-	RNP APCH
030	TF	EMTUG (IF)	-	270°(269.1°)	+0.71	6.0	-	+5400	-200	-	RNP APCH
010	IF	DOMKA (IAF)	-	-	+0.71	-	-	@9000	-	-	RNP APCH
020	TF	DANPU	-	313°(312.3°)	+0.71	23.3	L	+7600	-200	-	RNP APCH
030	TF	EMTUG (IF)	-	270°(269.1°)	+0.71	6.0	-	+5400	-200	-	RNP APCH
010	IF	DANPU (IAF)	-	-	+0.71	-	-	+7600	-200	-	RNP APCH
020	TF	EMTUG (IF)	-	270°(269.1°)	+0.71	6.0	-	+5400	-200	-	RNP APCH
010	IF	EMTUG (IF)	-	-	+0.71	-	-	+5400	-200	-	RNP APCH
020	TF	VESON	-	219°(218.5°)	+0.71	3.2	-	+4500	-	-	RNP APCH
030	TF	GUPNA (FAF)	-	219°(218.5°)	+0.71	4.8	L	@3500	-	-	RNP APCH
040	TF	ADMOX (MAPt)	Y	197°(196.5°)	+0.71	4.7	L	@1998	-	-	RNP APCH
050	CF	PEGSI	Y	179°(178.4°)	+0.71	21.0	-	+5500	-200	-	RNP APCH
060	DF	ADPEN	-	-	+0.71	-	R	+6000	-	-	RNP APCH
070	TF	VEVD	-	056°(054.9°)	+0.71	9.8	-	+7000	-	-	RNP APCH
080	TF	DANPU (IAF)	-	360°(359.1°)	+0.71	18.2	-	+7600	-200	-	RNP APCH
090	HM	DANPU (IAF)	Y	270°(269.1°)	+0.71	1 minute	R	+7600	-230	-	RNP APCH

WAYPOINT LIST

RNP a RWY11			
Waypoint Identifier	Coordinates		Pronunciation
ADMOX	19° 19' 10.73" N	097° 54' 43.50" E	ADD - MOX
ADPEN	19° 06' 08.78" N	097° 59' 37.25" E	ADD - PEN
BOKIB	19° 04' 33.60" N	098° 22' 25.20" E	BO - KIB
DANPU	19° 30' 04.72" N	098° 07' 45.48" E	DAN - PU
DOMKA	19° 14' 19.38" N	098° 26' 01.88" E	DOM - KA
EMTUG	19° 29' 59.22" N	098° 01' 24.44" E	EM - TUK
GUPNA	19° 23' 42.15" N	097° 56' 08.21" E	GUP - NA
PEGSI	18° 58' 06.16" N	097° 55' 19.99" E	PEG - SI
VESON	19° 27' 28.72" N	097° 59' 18.17" E	VE - SON
VEVD	19° 11' 46.96" N	098° 08' 03.48" E	VE - VID



CHANGE: CHART TITLE.

INTENTIONALLY BLANK