

**STANDARD ARRIVAL CHART -  
INSTRUMENT (STAR) - ICAO**

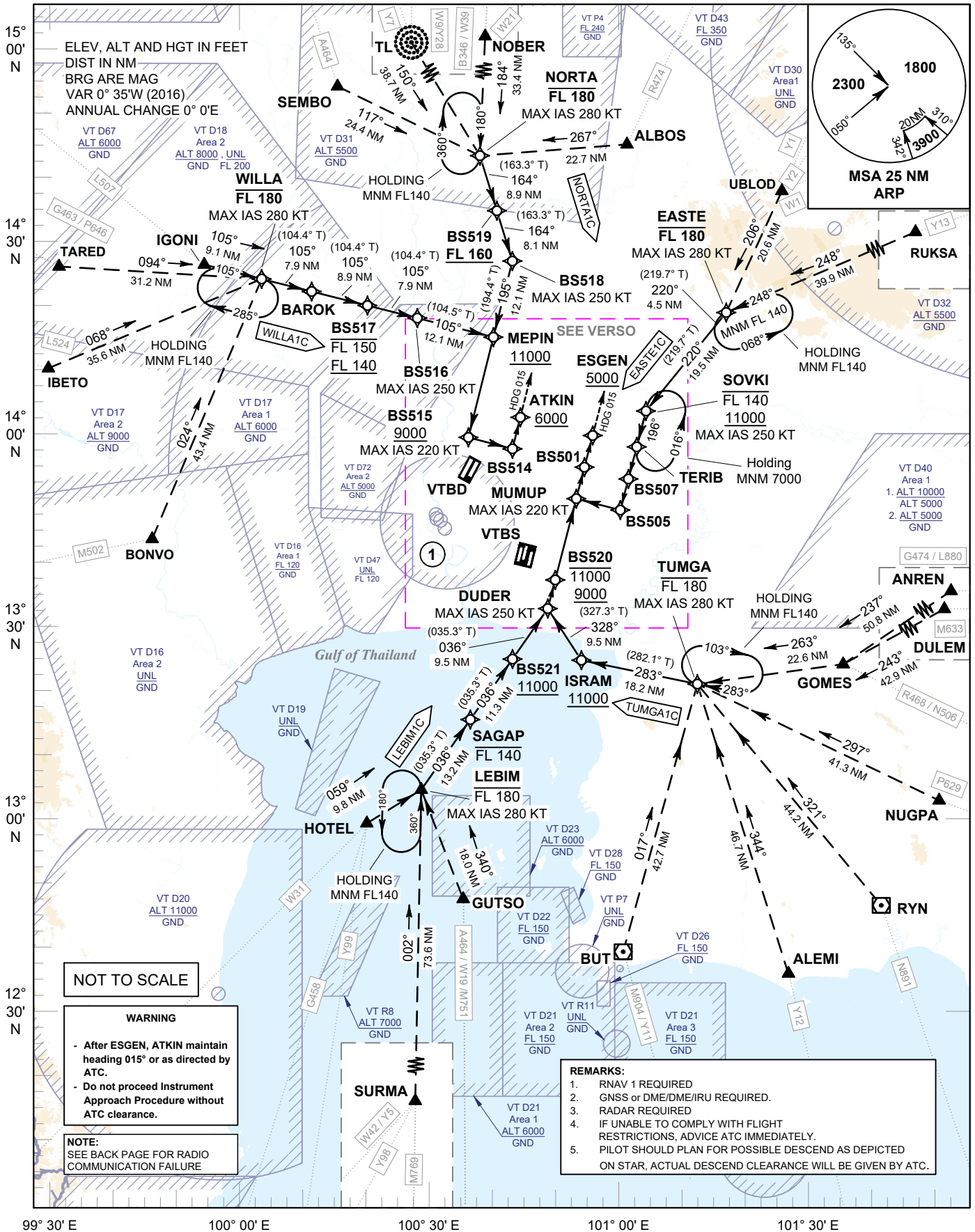
TRANSITION ALTITUDE  
11000 FT

**SPEED RESTRICTION**  
MAX IAS 250 KT AT OR  
BELOW ALT 10000 FT  
UNLESS OTHERWISE  
AUTHORIZED BY ATC.

APP : 119.1, 262.5  
: 120.3, 262.5  
: 133.4, 262.5  
: 122.35, 262.5  
: 124.35, 262.5  
: 125.2, 262.5  
ARR : 121.1, 262.5  
: 126.3, 262.5  
TWR : 118.2, 274.5  
: 119.0  
ARR ATIS : 133.6, 278.6

**BANGKOK/Suvarnabhumi Intl (VTBS)  
RNAV RWY19/20L/20R**

EASTE1C LEBIM1C NORTA1C  
TUMGA1C WILLA1C



CHANGE: Y28 ADDED.

99° 30' E      100° 00' E      100° 30' E      101° 00' E      101° 30' E