

**STANDARD ARRIVAL CHART -  
INSTRUMENT (STAR) - ICAO**

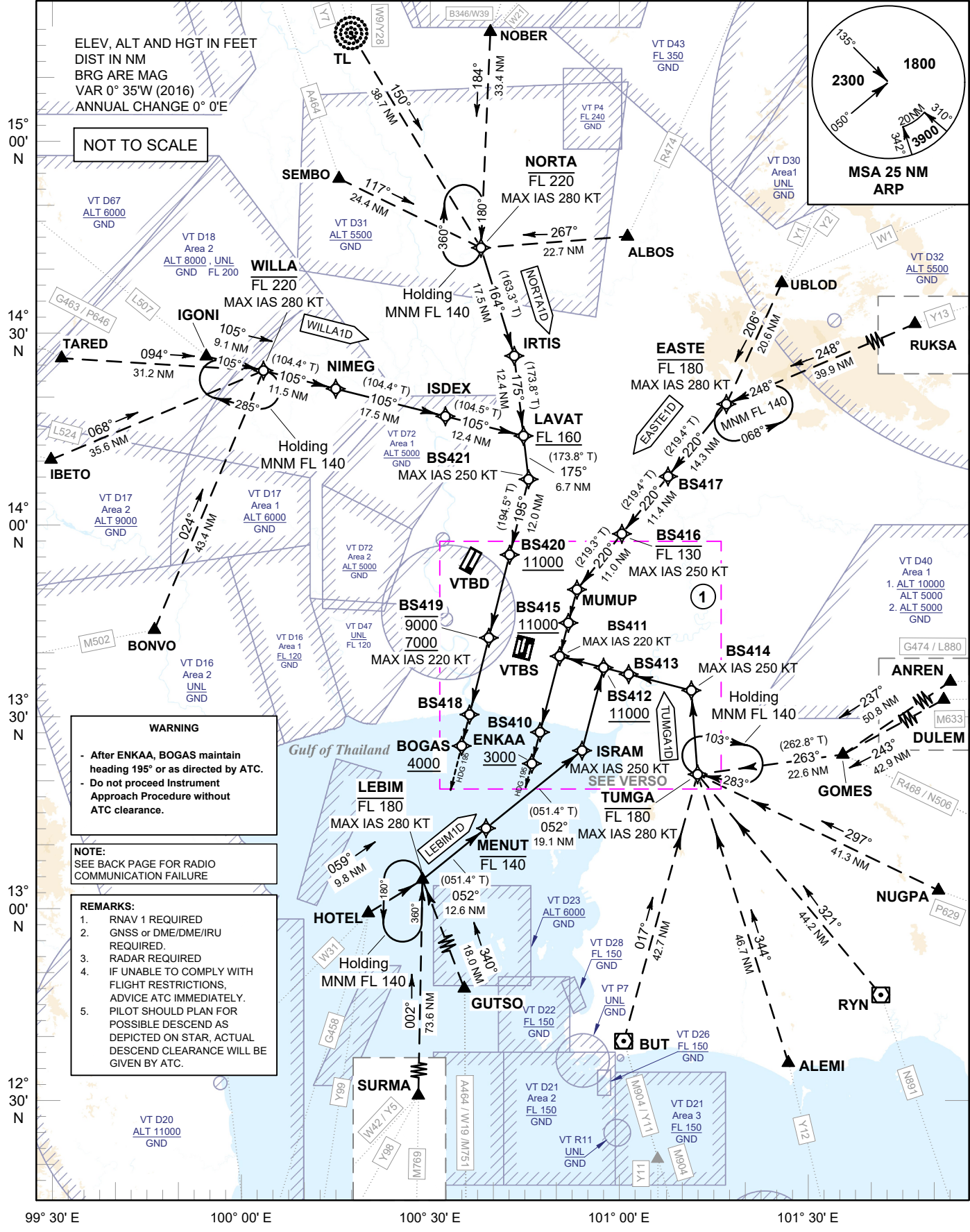
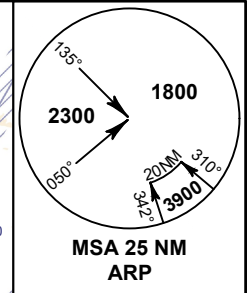
TRANSITION ALTITUDE  
11000 FT

**SPEED RESTRICTION**  
MAX IAS 250 KT AT OR  
BELOW ALT 10000 FT  
UNLESS OTHERWISE  
AUTHORIZED BY ATC.

APP	: 119.1, 274.5
	: 120.3, 274.5
	: 133.4, 274.5
	: 122.35, 274.5
	: 124.35, 274.5
	: 125.2, 274.5
ARR	: 121.1, 274.5
	: 126.3, 274.5
TWR	: 118.2, 262.5
	: 119.0
ARR ATIS	: 133.6, 278.6

**BANGKOK/Suvarnabhumi Intl (VTBS)  
RNAV RWY01/02L/02R**

EASTE1D LEBIM1D NORTA1D  
TUMGA1D WILLA1D



CHANGE: Y28 ADDED.

99° 30' E      100° 00' E      100° 30' E      101° 00' E      101° 30' E