

STANDARD DEPARTURE CHART - INSTRUMENT (SID) - ICAO

TRANSITION ALTITUDE
11000 FT

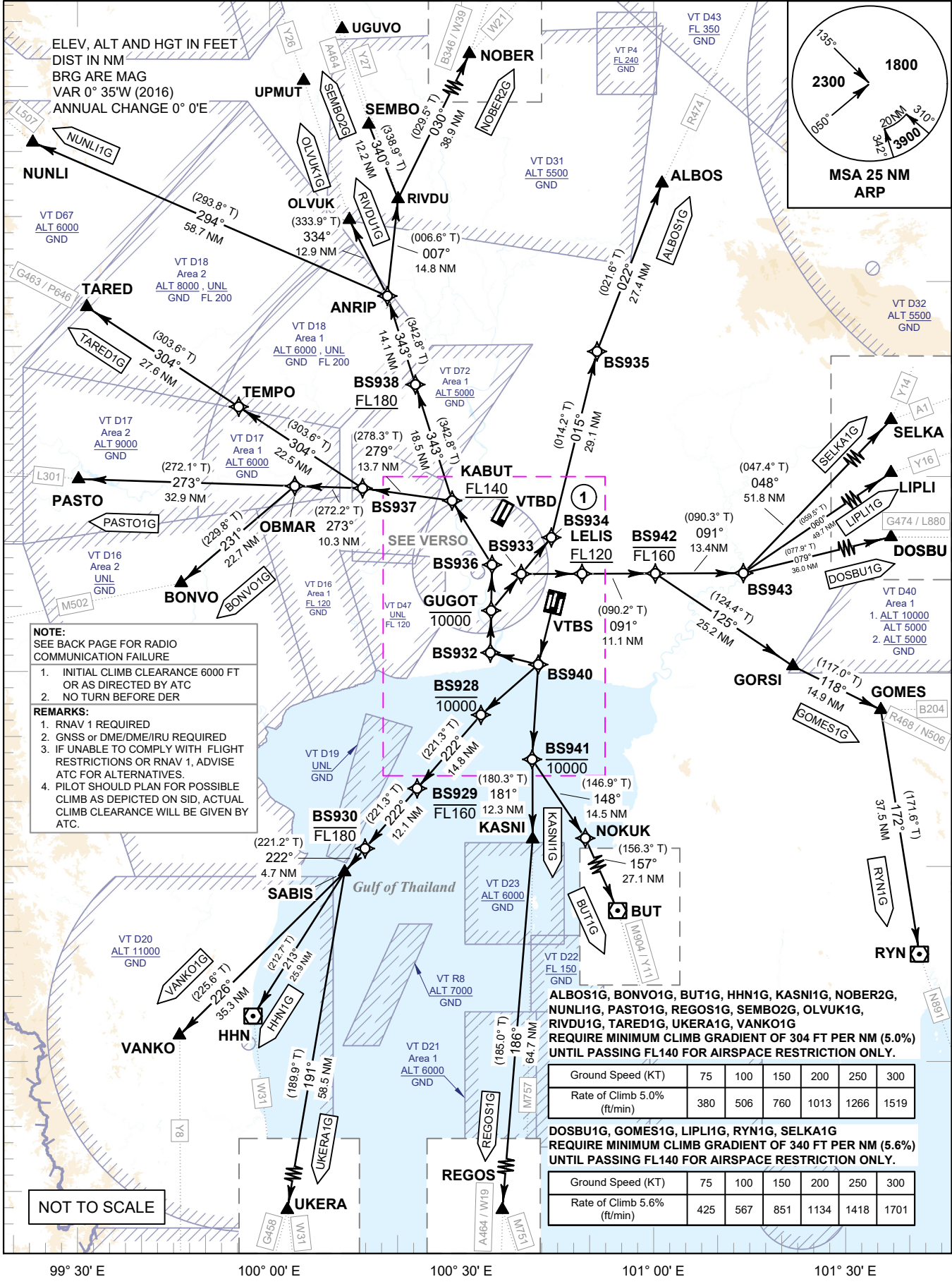
SPEED RESTRICTION
MAX IAS 250 KT AT OR BELOW ALT 10000 FT UNLESS OTHERWISE AUTHORIZED BY ATC.

APP : 119.1, 262.5
: 120.3, 262.5
: 133.4, 262.5
: 122.35, 262.5
: 124.35, 262.5
: 125.2, 262.5
ARR : 121.1, 262.5
: 126.3, 262.5
TWR : 118.2, 274.5
: 119.0
DEP ATIS : 127.65

**BANGKOK/Suvarnabhumi Intl (VTBS)
RNAV RWY20L**

ALBOS1G BONVO1G BUT1G DOSBU1G
GOMES1G HHN1G KASNI1G LIPLI1G
NOBER2G NUNLI1G OLVUK1G PASTO1G
REGOS1G RIVDU1G RYN1G SELKA1G
SEMBO2G TARED1G UKERA1G VANKO1G

CHANGE: CHART TITLE, REVISED SID NOBER2G AND SEMBO2G, SID OLVUK1G AND RIVDU1G ADDED, Y26 AND Y27 ADDED, CANCEL TL1G.



NOTE:
SEE BACK PAGE FOR RADIO COMMUNICATION FAILURE

- INITIAL CLIMB CLEARANCE 6000 FT OR AS DIRECTED BY ATC
- NO TURN BEFORE DER

REMARKS:

- RNAV 1 REQUIRED
- GNSS or DME/DME/IRU REQUIRED
- IF UNABLE TO COMPLY WITH FLIGHT RESTRICTIONS OR RNAV 1, ADVISE ATC FOR ALTERNATIVES.
- PILOT SHOULD PLAN FOR POSSIBLE CLIMB AS DEPICTED ON SID, ACTUAL CLIMB CLEARANCE WILL BE GIVEN BY ATC.

Ground Speed (KT)	75	100	150	200	250	300
Rate of Climb 5.0% (ft/min)	380	506	760	1013	1266	1519

DOSBU1G, GOMES1G, LIPLI1G, RYN1G, SELKA1G
REQUIRE MINIMUM CLIMB GRADIENT OF 340 FT PER NM (5.6%) UNTIL PASSING FL140 FOR AIRSPACE RESTRICTION ONLY.

Ground Speed (KT)	75	100	150	200	250	300
Rate of Climb 5.6% (ft/min)	425	567	851	1134	1418	1701

NOT TO SCALE