

**STANDARD DEPARTURE CHART - INSTRUMENT (SID) - ICAO**

TRANSITION ALTITUDE  
11000 FT

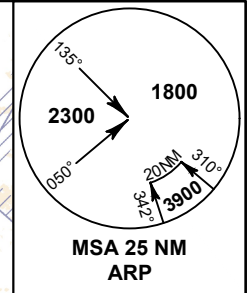
**SPEED RESTRICTION**  
MAX IAS 250 KT AT OR BELOW ALT 10000 FT UNLESS OTHERWISE AUTHORIZED BY ATC.

APP : 119.1, 262.5  
: 120.3, 262.5  
: 133.4, 262.5  
: 122.35, 262.5  
: 124.35, 262.5  
: 125.2, 262.5  
ARR : 121.1, 262.5  
: 126.3, 262.5  
TWR : 118.2, 274.5  
: 119.0  
DEP ATIS : 127.65

**BANGKOK/Suvarnabhumi Intl (VTBS)**

**RNAV RWY02L**

ALBOS1F BONVO1F BUT1F DOSBU1F  
GOMES1F HHN1F KASNI1F LIPL1F  
NOBER2F NUNLI1F OLVUK1F PASTO1F  
REGOS1F RIVDU1F RYN1F SELKA1F  
SEMBO2F TARED1F UKERA1F VANKO1F



NOT TO SCALE

ELEV, ALT AND HGT IN FEET  
DIST IN NM  
BRG ARE MAG  
VAR 0° 35'W (2016)  
ANNUAL CHANGE 0° 0'E

**NOTE:**  
SEE BACK PAGE FOR RADIO COMMUNICATION FAILURE

- INITIAL CLIMB CLEARANCE 6000 FT OR AS DIRECTED BY ATC
- NO TURN BEFORE DER

**REMARKS:**

- RNAV 1 REQUIRED
- GNSS or DME/DME/IRU REQUIRED
- IF UNABLE TO COMPLY WITH FLIGHT RESTRICTIONS OR RNAV 1, ADVISE ATC FOR ALTERNATIVES.
- PILOT SHOULD PLAN FOR POSSIBLE CLIMB AS DEPICTED ON SID, ACTUAL CLIMB CLEARANCE WILL BE GIVEN BY ATC.

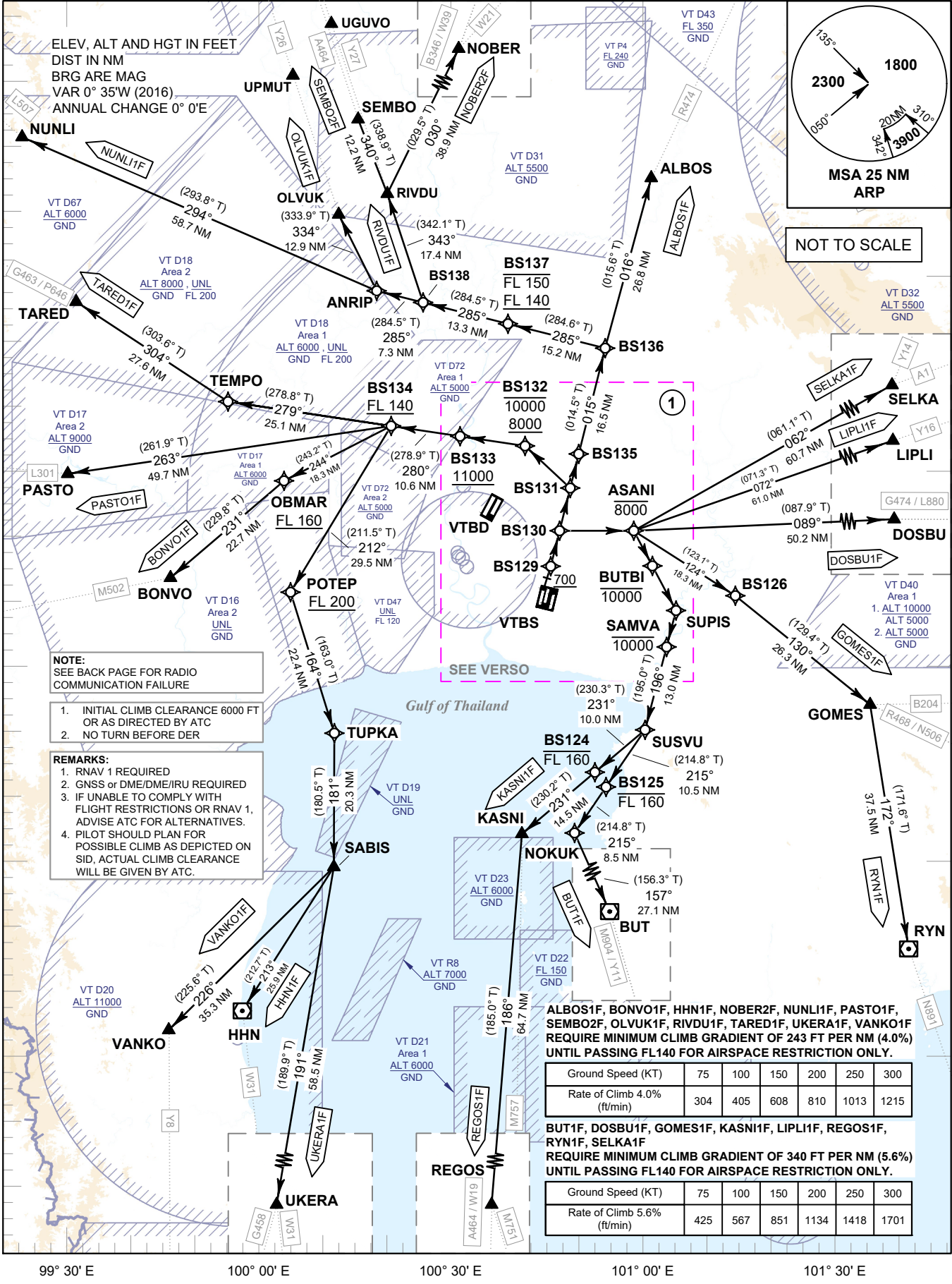
ALBOS1F, BONVO1F, HHN1F, NOBER2F, NUNLI1F, PASTO1F, SEMBO2F, OLVUK1F, RIVDU1F, TARED1F, UKERA1F, VANKO1F REQUIRE MINIMUM CLIMB GRADIENT OF 243 FT PER NM (4.0%) UNTIL PASSING FL140 FOR AIRSPACE RESTRICTION ONLY.

Ground Speed (KT)	75	100	150	200	250	300
Rate of Climb 4.0% (ft/min)	304	405	608	810	1013	1215

BUT1F, DOSBU1F, GOMES1F, KASNI1F, LIPL1F, REGOS1F, RYN1F, SELKA1F REQUIRE MINIMUM CLIMB GRADIENT OF 340 FT PER NM (5.6%) UNTIL PASSING FL140 FOR AIRSPACE RESTRICTION ONLY.

Ground Speed (KT)	75	100	150	200	250	300
Rate of Climb 5.6% (ft/min)	425	567	851	1134	1418	1701

CHANGE: CHART TITLE, REVISED SID NOBER2F AND SEMBO2F, SID OLVUK1F AND RIVDU1F ADDED, Y26 AND Y27 ADDED, CANCEL TL1F.



99° 30' E      100° 00' E      100° 30' E      101° 00' E      101° 30' E