

**STANDARD DEPARTURE CHART - INSTRUMENT (SID) - ICAO**

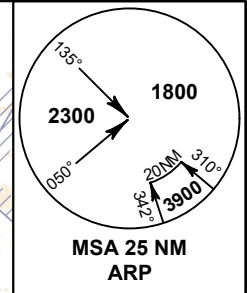
TRANSITION ALTITUDE  
11000 FT

**SPEED RESTRICTION**  
MAX IAS 250 KT AT OR BELOW ALT 10000 FT UNLESS OTHERWISE AUTHORIZED BY ATC.

APP : 119.1, 262.5  
: 120.3, 262.5  
: 133.4, 262.5  
: 122.35, 262.5  
: 124.35, 262.5  
: 125.2, 262.5  
ARR : 121.1, 262.5  
: 126.3, 262.5  
TWR : 118.2, 274.5  
: 119.0  
DEP ATIS : 127.65

**BANGKOK/Suvarnabhumi Intl (VTBS)  
RNAV RWY01**

ALBOS1K BONVO1K BUT1K DOSBU1K  
GOMES1K HHN1K KASNI1K LIPLI1K  
NOBER2K NUNLI1K OLVUK1K PASTO1K  
REGOS1K RIVDU1K RYN1K SELKA1K  
SEMBO2K TARED1K UKERA1K VANKO1K



NOT TO SCALE

ELEV, ALT AND HGT IN FEET  
DIST IN NM  
BRG ARE MAG  
VAR 0° 35'W (2016)  
ANNUAL CHANGE 0° 0'E

**NOTE:**  
SEE BACK PAGE FOR RADIO COMMUNICATION FAILURE

INITIAL CLIMB CLEARANCE 6000 FT OR AS DIRECTED BY ATC

**REMARKS:**  
1. RNAV 1 REQUIRED  
2. GNSS or DME/DME/IRU REQUIRED  
3. IF UNABLE TO COMPLY WITH FLIGHT RESTRICTIONS OR RNAV 1, ADVISE ATC FOR ALTERNATIVES.  
4. PILOT SHOULD PLAN FOR POSSIBLE CLIMB AS DEPICTED ON SID, ACTUAL CLIMB CLEARANCE WILL BE GIVEN BY ATC.

ALBOS1K, BONVO1K, HHN1K, NOBER2K, NUNLI1K, PASTO1K, SEMBO2K, OLVUK1K, RIVDU1K, TARED1K, UKERA1K, VANKO1K  
REQUIRE MINIMUM CLIMB GRADIENT OF 243 FT PER NM (4.0%) UNTIL PASSING FL140 FOR AIRSPACE RESTRICTION ONLY.

Ground Speed (KT)	75	100	150	200	250	300
Rate of Climb 4.0% (ft/min)	304	405	608	810	1013	1215

BUT1K, DOSBU1K, GOMES1K, KASNI1K, LIPLI1K, REGOS1K, RYN1K, SELKA1K  
REQUIRE MINIMUM CLIMB GRADIENT OF 340 FT PER NM (5.6%) UNTIL PASSING FL140 FOR AIRSPACE RESTRICTION ONLY.

Ground Speed (KT)	75	100	150	200	250	300
Rate of Climb 5.6% (ft/min)	425	567	851	1134	1418	1701

CHANGE: CHART TITLE, REVISED SID NOBER2K AND SEMBO2K, SID OLVUK1K AND RIVDU1K ADDED. Y26 AND Y27 ADDED. CANCEL TL1K.

