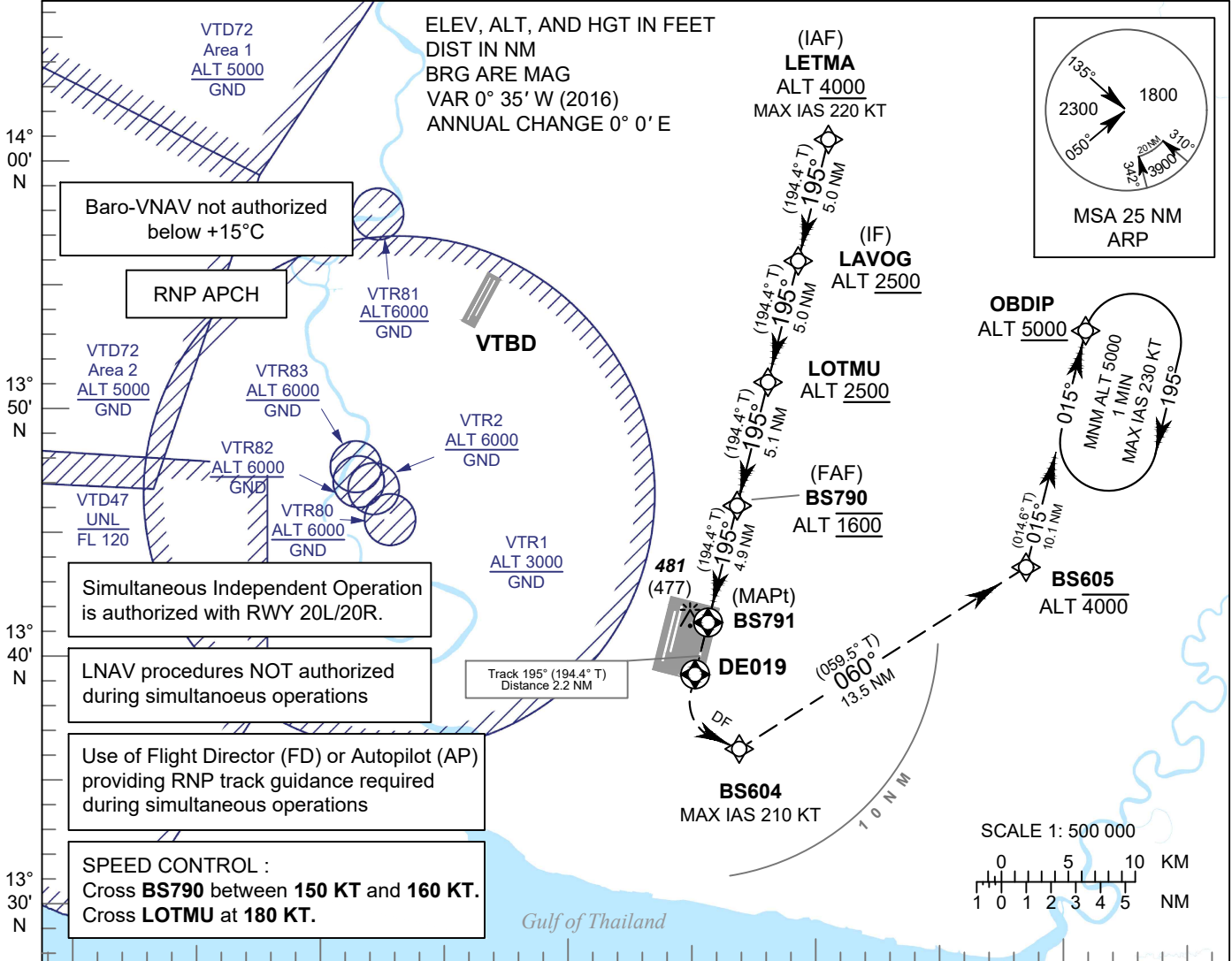


INSTRUMENT APPROACH CHART - ICAO **AERODROME ELEV 8 FT**
 HEIGHTS RELATED TO
 THR RWY19 - ELEV 4 FT

APP	: 119.1, 262.5
	: 120.3, 262.5
	: 133.4, 262.5
	: 122.35, 262.5
	: 124.35, 262.5
	: 125.2, 262.5
ARR	: 121.1, 262.5
	: 126.3, 262.5
TWR	: 118.2, 274.5
	: 119.0
ARR ATIS	: 133.6, 278.6

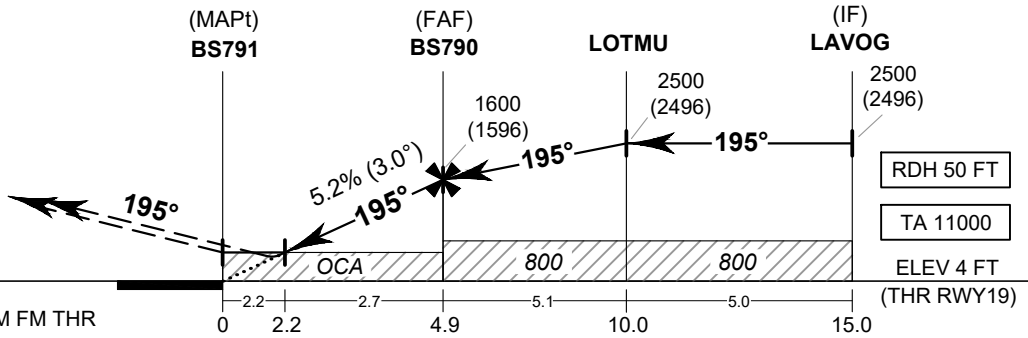
BANGKOK / Suvarnabhumi Intl (VTBS)

RNP RWY19



MISSED APPROACH:
No turn before MAPt.

At MAPt, climb to DE019, then turn left to BS604, turn left climb up to 4000 FT at BS605, then turn left and proceed to OBDIP at minimum 5000 FT and hold or as directed by ATC.



OCA/H	A	B	C	D	NM to NEXT WPT	2.2 NM	3 NM	4 NM	FAF			
LNAV / VNAV	600 (596)				Altitude (Height)	750 (746)	1005 (1001)	1320 (1316)	1600 (1596)			
LNAV	750 (746)				Ground speed	knot	70	90	100	120	140	160
Circling (OCH AAL)	800 (792)		900 (892)		Rate of descent FAF-MAPT 5.2%	ft/min	369	474	527	632	737	843

CHANGE: REVISED MISSED APPROACH INSTRUCTION.