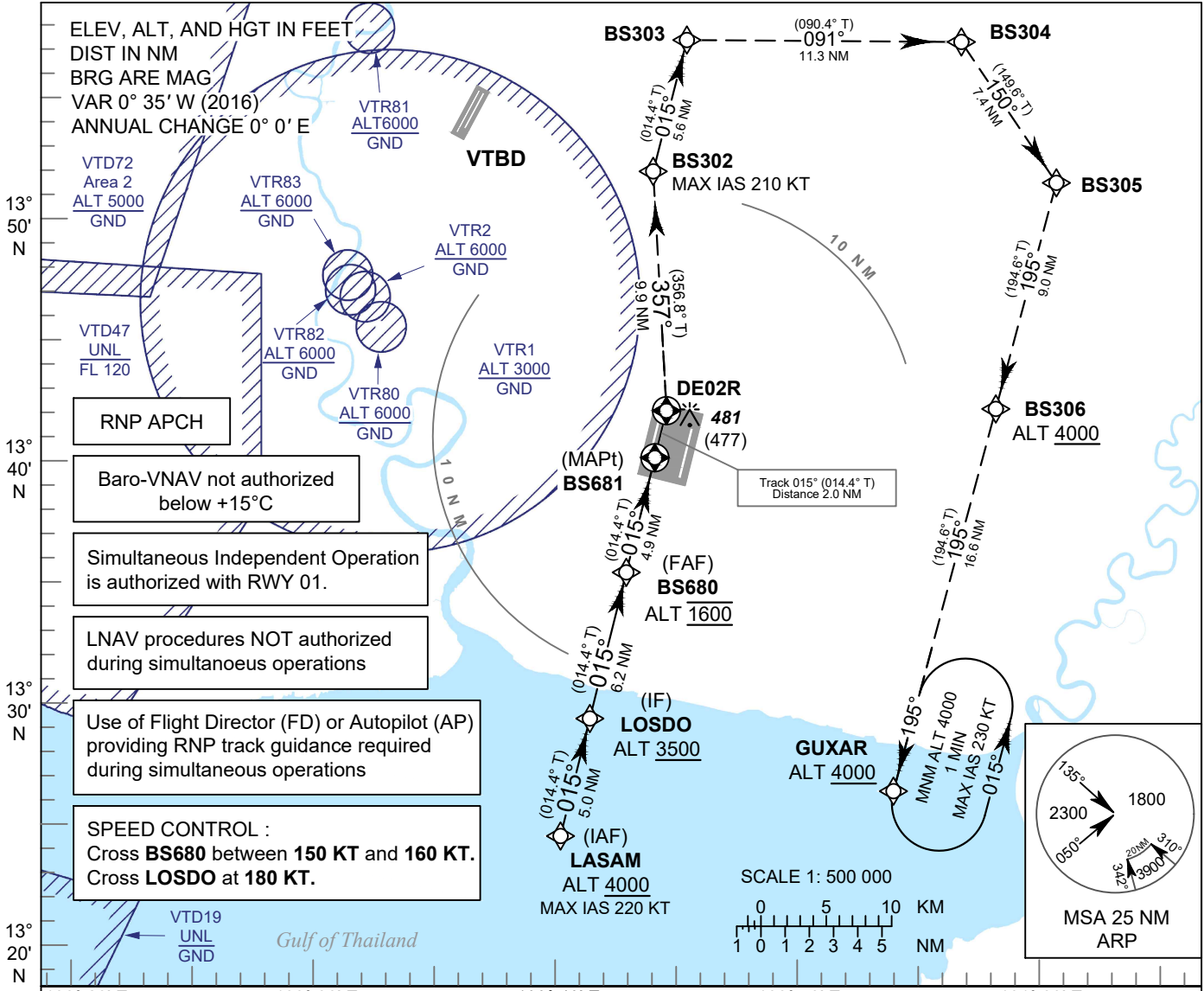


INSTRUMENT APPROACH CHART - ICAO **AERODROME ELEV 8 FT**
 HEIGHTS RELATED TO
 THR RWY02R - ELEV 4 FT

BANGKOK / Suvarnabhumi Intl (VTBS)
RNP RWY02R

APP	: 119.1, 262.5
	: 120.3, 262.5
	: 133.4, 262.5
	: 122.35, 262.5
	: 124.35, 262.5
	: 125.2, 262.5
ARR	: 121.1, 262.5
	: 126.3, 262.5
TWR	: 118.2, 274.5
	: 119.0
ARR ATIS	: 133.6, 278.6



RNP APCH

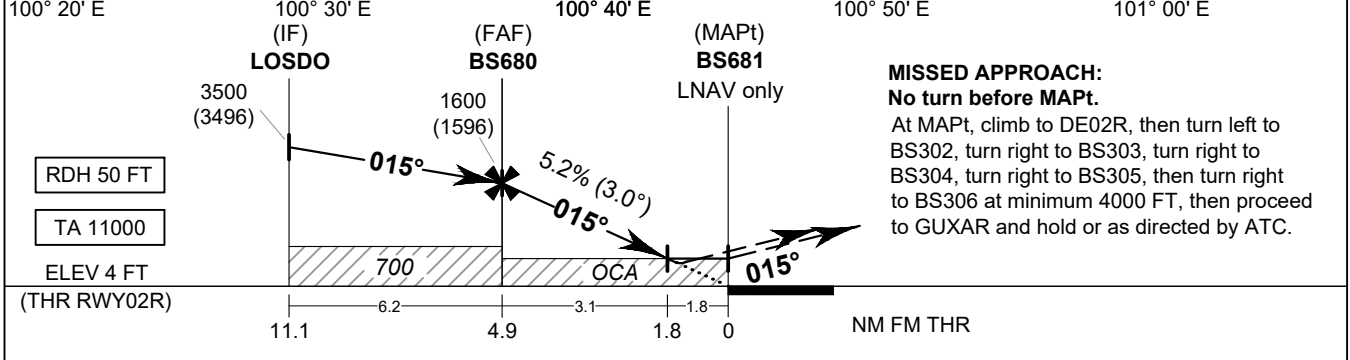
Baro-VNAV not authorized below +15°C

Simultaneous Independent Operation is authorized with RWY 01.

LNAV procedures NOT authorized during simultaneous operations

Use of Flight Director (FD) or Autopilot (AP) providing RNP track guidance required during simultaneous operations

SPEED CONTROL :
 Cross **BS680** between **150 KT** and **160 KT**.
 Cross **LOSDO** at **180 KT**.



OCA/H	A	B	C	D	NM to NEXT WPT	FAF	4 NM	3 NM	2 NM	1.8 NM		
LNAV / VNAV	540 (536)				Altitude (Height)	1600 (1596)	1320 (1316)	1005 (1001)	690 (686)	620 (616)		
LNAV	620 (616)				Ground speed	knot	70	90	100	120	140	160
Circling (OCH AAL)	800 (792)		900 (892)		Rate of descent FAF-MAPt 5.2%	ft/min	369	474	527	632	737	843

CHANGE: CORRECTED PROFILE VIEW WPT NAME, LOSDO.