

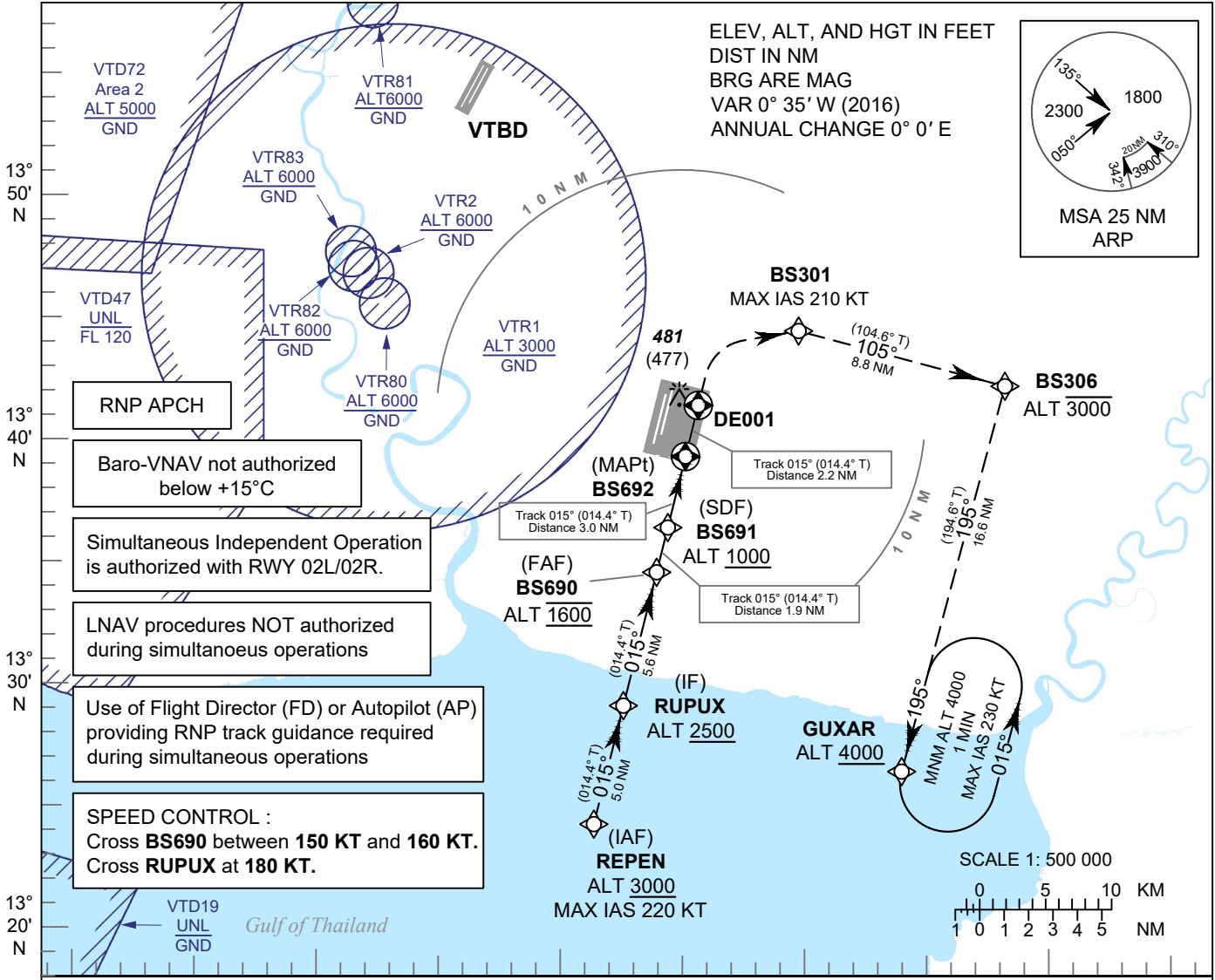
**INSTRUMENT
APPROACH
CHART - ICAO**

**AERODROME ELEV 8 FT
HEIGHTS RELATED TO
THR RWY01 - ELEV 4 FT**

APP	: 119.1, 262.5
	: 120.3, 262.5
	: 133.4, 262.5
	: 122.35, 262.5
	: 124.35, 262.5
ARR	: 125.2, 262.5
	: 121.1, 262.5
	: 126.3, 262.5
TWR	: 118.2, 274.5
	: 119.0
ARR ATIS	: 133.6, 278.6

BANGKOK / Suvarnabhumi Intl (VTBS)

RNP RWY01



RNP APCH

Baro-VNAV not authorized below +15°C

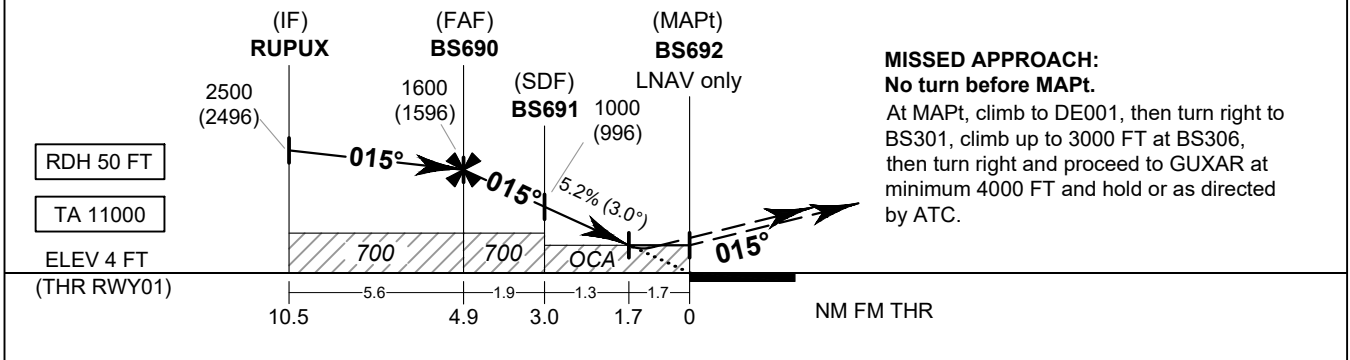
Simultaneous Independent Operation is authorized with RWY 02L/02R.

LNAV procedures NOT authorized during simultaneous operations

Use of Flight Director (FD) or Autopilot (AP) providing RNP track guidance required during simultaneous operations

SPEED CONTROL :
Cross **BS690** between **150 KT** and **160 KT**.
Cross **RUPUX** at **180 KT**.

100° 20' E 100° 30' E 100° 40' E 100° 50' E 101° 00' E



OCA/H	A	B	C	D	NM to NEXT WPT	FAF	4 NM	3 NM	2 NM	1.7 NM		
LNAV / VNAV	540 (536)				Altitude (Height)	1600 (1596)	1320 (1316)	1005 (1001)	690 (686)	600 (596)		
LNAV	600 (596)				Ground speed	knot	70	90	100	120	140	160
Circling (OCH AAL)	800 (792)		900 (892)		Rate of descent FAF-MAPT 5.2%	ft/min	369	474	527	632	737	843

CHANGE: REVISED MISSED APPROACH INSTRUCTION.