

**STANDARD DEPARTURE CHART - INSTRUMENT (SID) - ICAO**

TRANSITION ALTITUDE  
11000 FT

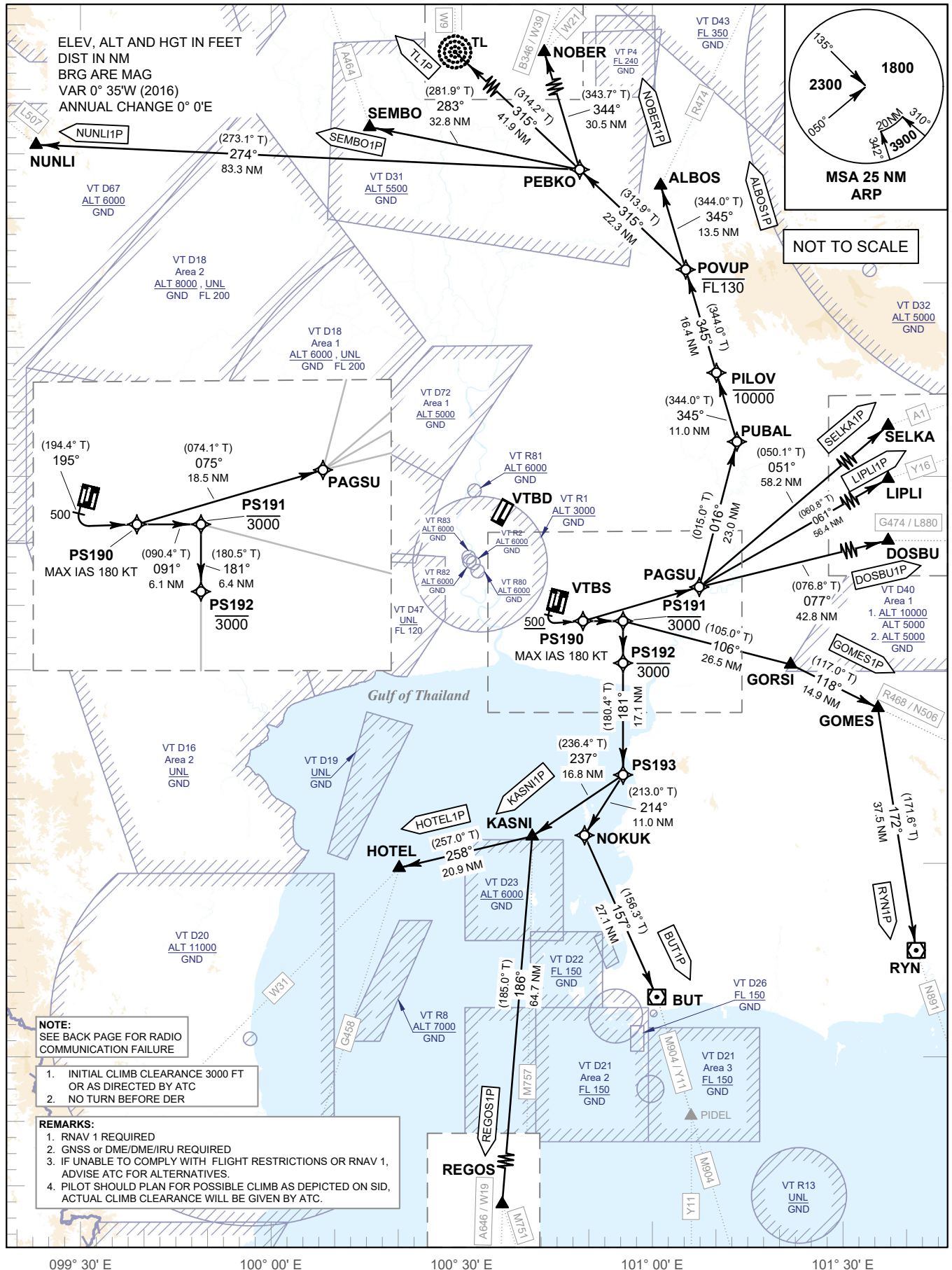
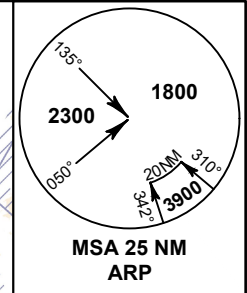
**SPEED RESTRICTION**  
MAX IAS 250 KT AT OR BELOW ALT 10000 FT UNLESS OTHERWISE AUTHORIZED BY ATC.

APP	: 119.1, 262.5
	: 119.25, 262.5
	: 120.3, 262.5
	: 133.4, 262.5
	: 122.35, 262.5
	: 124.35, 262.5
	: 125.2, 262.5
ARR	: 121.1, 262.5
	: 126.3, 262.5
TWR	: 118.2, 274.5
	: 119.0
DEP ATIS	: 127.65

**BANGKOK/Suvarnabhumi Intl (VTBS)**

**RNAV RWY20R (PROPELLER)**

- ALBOS1P BUT1P DOSBU1P GOMES1P
- HOTEL1P KASNI1P LIPLI1P NOBER1P
- NUNLI1P REGOS1P RYN1P SELKA1P
- SEMBO1P TL1P



CHANGE: NEW PROCEDURES.