

STANDARD DEPARTURE CHART - INSTRUMENT (SID) - ICAO

TRANSITION ALTITUDE
11000 FT

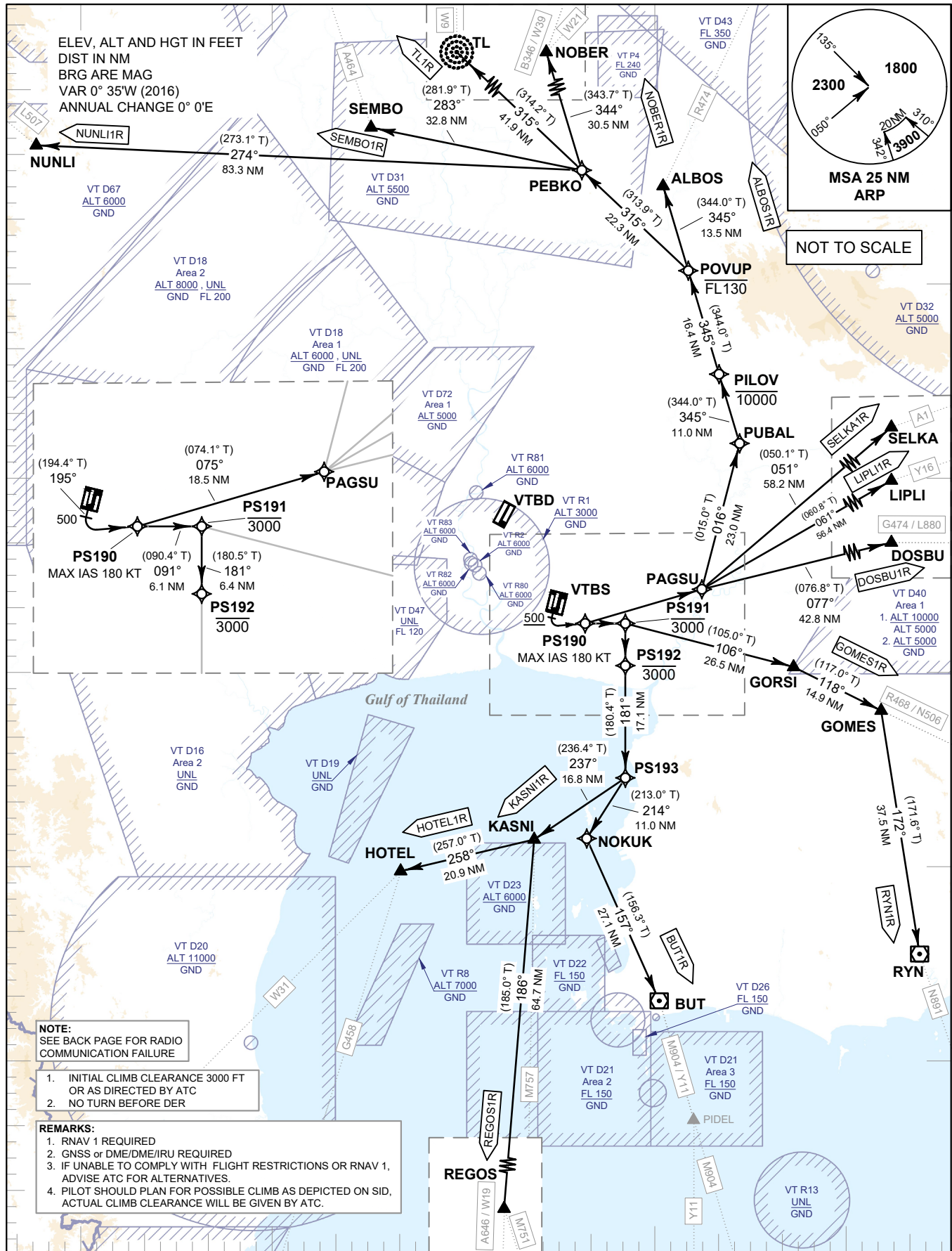
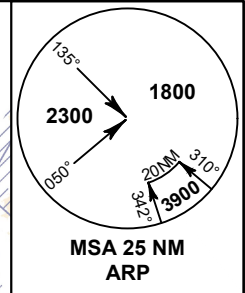
SPEED RESTRICTION
MAX IAS 250 KT AT OR BELOW ALT 10000 FT UNLESS OTHERWISE AUTHORIZED BY ATC.

APP	: 119.1, 262.5
	: 119.25, 262.5
	: 120.3, 262.5
	: 133.4, 262.5
	: 122.35, 262.5
	: 124.35, 262.5
	: 125.2, 262.5
ARR	: 121.1, 262.5
	: 126.3, 262.5
TWR	: 118.2, 274.5
	: 119.0
DEP ATIS	: 127.65

BANGKOK/Suvarnabhumi Intl (VTBS)

RNAV RWY20L (PROPELLER)

ALBOS1R BUT1R DOSBU1R GOMES1R
HOTEL1R KASNI1R LIPLI1R NOBER1R
NUNLI1R REGOS1R RYN1R SELKA1R
SEMBO1R TL1R



NOTE:
SEE BACK PAGE FOR RADIO COMMUNICATION FAILURE

1. INITIAL CLIMB CLEARANCE 3000 FT OR AS DIRECTED BY ATC
2. NO TURN BEFORE DER

REMARKS:

1. RNAV 1 REQUIRED
2. GNSS or DME/DME/IRU REQUIRED
3. IF UNABLE TO COMPLY WITH FLIGHT RESTRICTIONS OR RNAV 1, ADVISE ATC FOR ALTERNATIVES.
4. PILOT SHOULD PLAN FOR POSSIBLE CLIMB AS DEPICTED ON SID, ACTUAL CLIMB CLEARANCE WILL BE GIVEN BY ATC.

CHANGE: NEW PROCEDURES.

099° 30' E 100° 00' E 100° 30' E 101° 00' E 101° 30' E