

**STANDARD DEPARTURE CHART - INSTRUMENT (SID) - ICAO**

TRANSITION ALTITUDE  
11000 FT

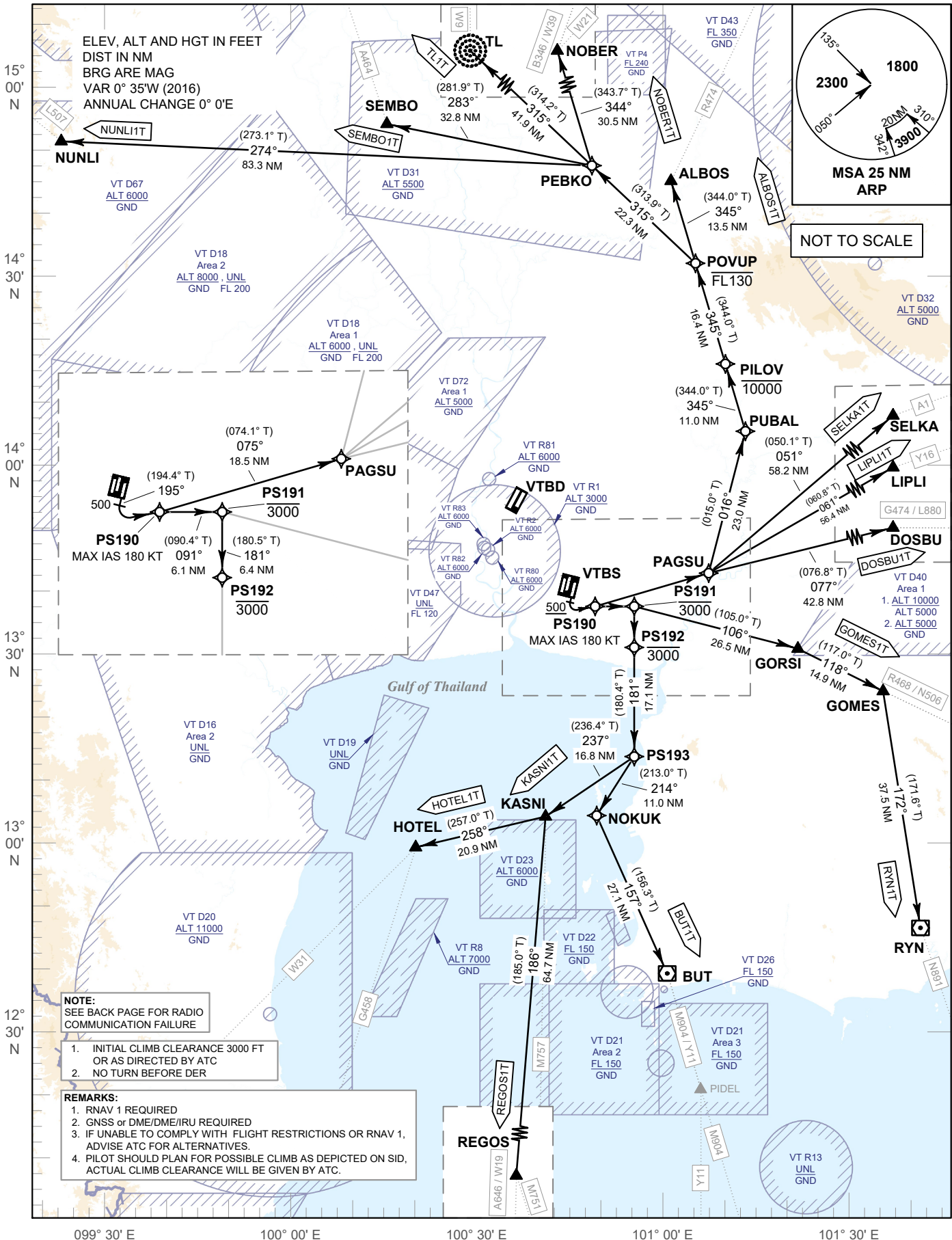
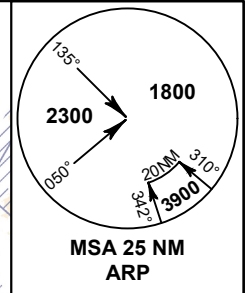
**SPEED RESTRICTION**  
MAX IAS 250 KT AT OR BELOW ALT 10000 FT UNLESS OTHERWISE AUTHORIZED BY ATC.

APP	: 119.1, 262.5
	: 119.25, 262.5
	: 120.3, 262.5
	: 133.4, 262.5
	: 122.35, 262.5
	: 124.35, 262.5
	: 125.2, 262.5
ARR	: 121.1, 262.5
	: 126.3, 262.5
TWR	: 118.2, 274.5
	: 119.0
DEP ATIS	: 127.65

**BANGKOK/Suvarnabhumi Intl (VTBS)**

**RNAV RWY19 (PROPELLER)**

ALBOS1T BUT1T DOSBU1T GOMES1T  
HOTEL1T KASNI1T LIPLI1T NOBER1T  
NUNLI1T REGOS1T RYN1T SELKA1T  
SEMBO1T TL1T



**NOTE:**  
SEE BACK PAGE FOR RADIO COMMUNICATION FAILURE

1. INITIAL CLIMB CLEARANCE 3000 FT OR AS DIRECTED BY ATC
2. NO TURN BEFORE DER

**REMARKS:**

1. RNAV 1 REQUIRED
2. GNSS or DME/IRU REQUIRED
3. IF UNABLE TO COMPLY WITH FLIGHT RESTRICTIONS OR RNAV 1, ADVISE ATC FOR ALTERNATIVES.
4. PILOT SHOULD PLAN FOR POSSIBLE CLIMB AS DEPICTED ON SID, ACTUAL CLIMB CLEARANCE WILL BE GIVEN BY ATC.

CHANGE: NEW PROCEDURES.

099° 30' E      100° 00' E      100° 30' E      101° 00' E      101° 30' E