

STANDARD DEPARTURE CHART - INSTRUMENT (SID) - ICAO

TRANSITION ALTITUDE
11000 FT

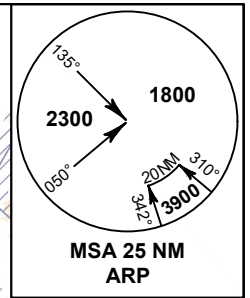
SPEED RESTRICTION
MAX IAS 250 KT AT OR BELOW ALT 10000 FT UNLESS OTHERWISE AUTHORIZED BY ATC.

APP	: 119.1, 262.5
	: 119.25, 262.5
	: 120.3, 262.5
	: 133.4, 262.5
	: 122.35, 262.5
	: 124.35, 262.5
	: 125.2, 262.5
ARR	: 121.1, 262.5
	: 126.3, 262.5
TWR	: 118.2, 274.5
	: 119.0
DEP ATIS	: 127.65

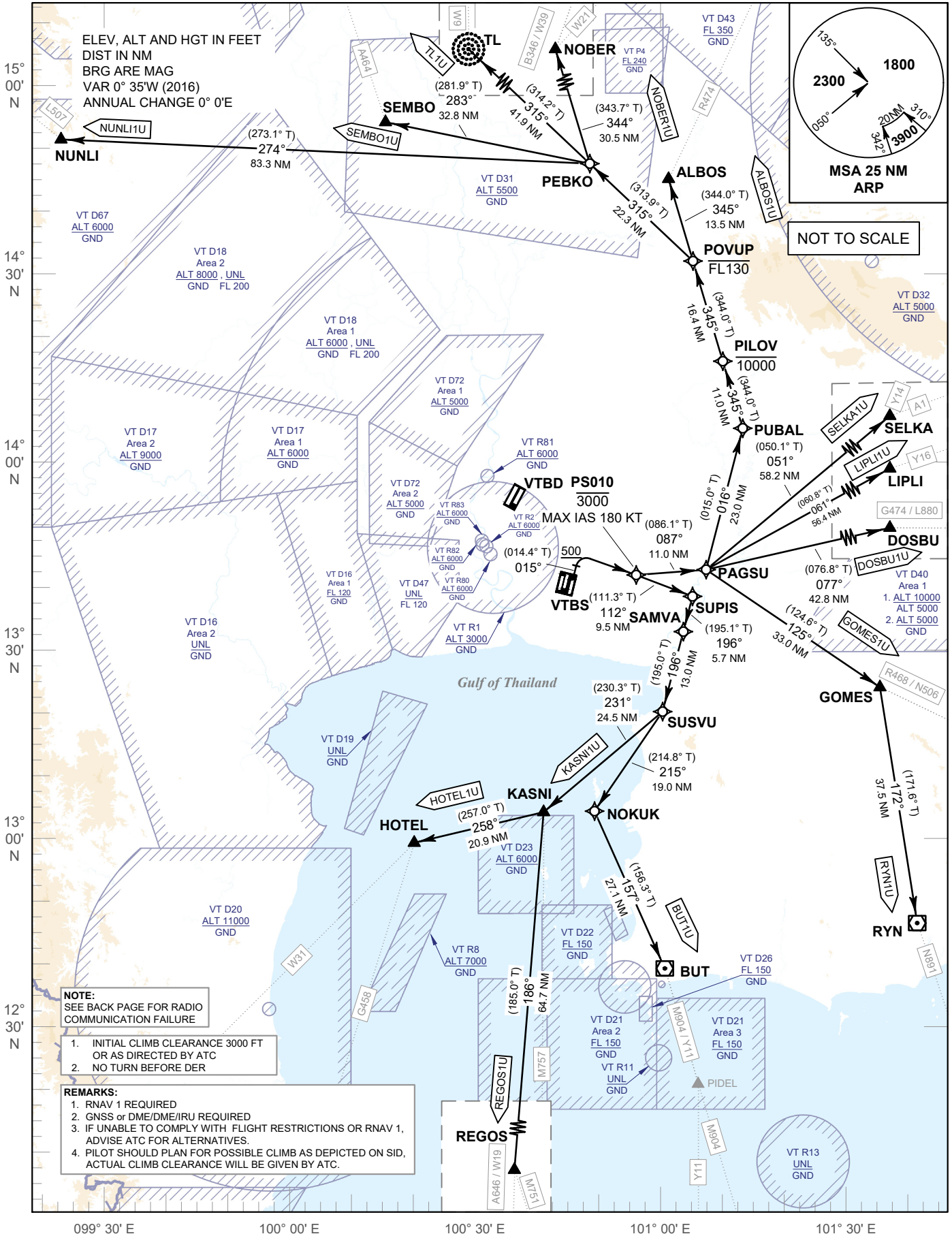
BANGKOK/Suvarnabhumi Intl (VTBS)

RNAV RWY01 (PROPELLER)

ALBOS1U BUT1U DOSBU1U GOMES1U
HOTEL1U KASNI1U LIPL1U NOBER1U
NUNLI1U REGOS1U RYN1U SELKA1U
SEMBO1U TL1U



NOT TO SCALE



ELEV, ALT AND HGT IN FEET
DIST IN NM
BRG ARE MAG
VAR 0° 35'W (2016)
ANNUAL CHANGE 0° 0'E

NOTE:
SEE BACK PAGE FOR RADIO COMMUNICATION FAILURE

1. INITIAL CLIMB CLEARANCE 3000 FT OR AS DIRECTED BY ATC
2. NO TURN BEFORE DER

REMARKS:

1. RNAV 1 REQUIRED
2. GNSS or DME/DME/IRU REQUIRED
3. IF UNABLE TO COMPLY WITH FLIGHT RESTRICTIONS OR RNAV 1, ADVISE ATC FOR ALTERNATIVES.
4. PILOT SHOULD PLAN FOR POSSIBLE CLIMB AS DEPICTED ON SID, ACTUAL CLIMB CLEARANCE WILL BE GIVEN BY ATC.

CHANGE: NEW PROCEDURES.

099° 30' E 100° 00' E 100° 30' E 101° 00' E 101° 30' E