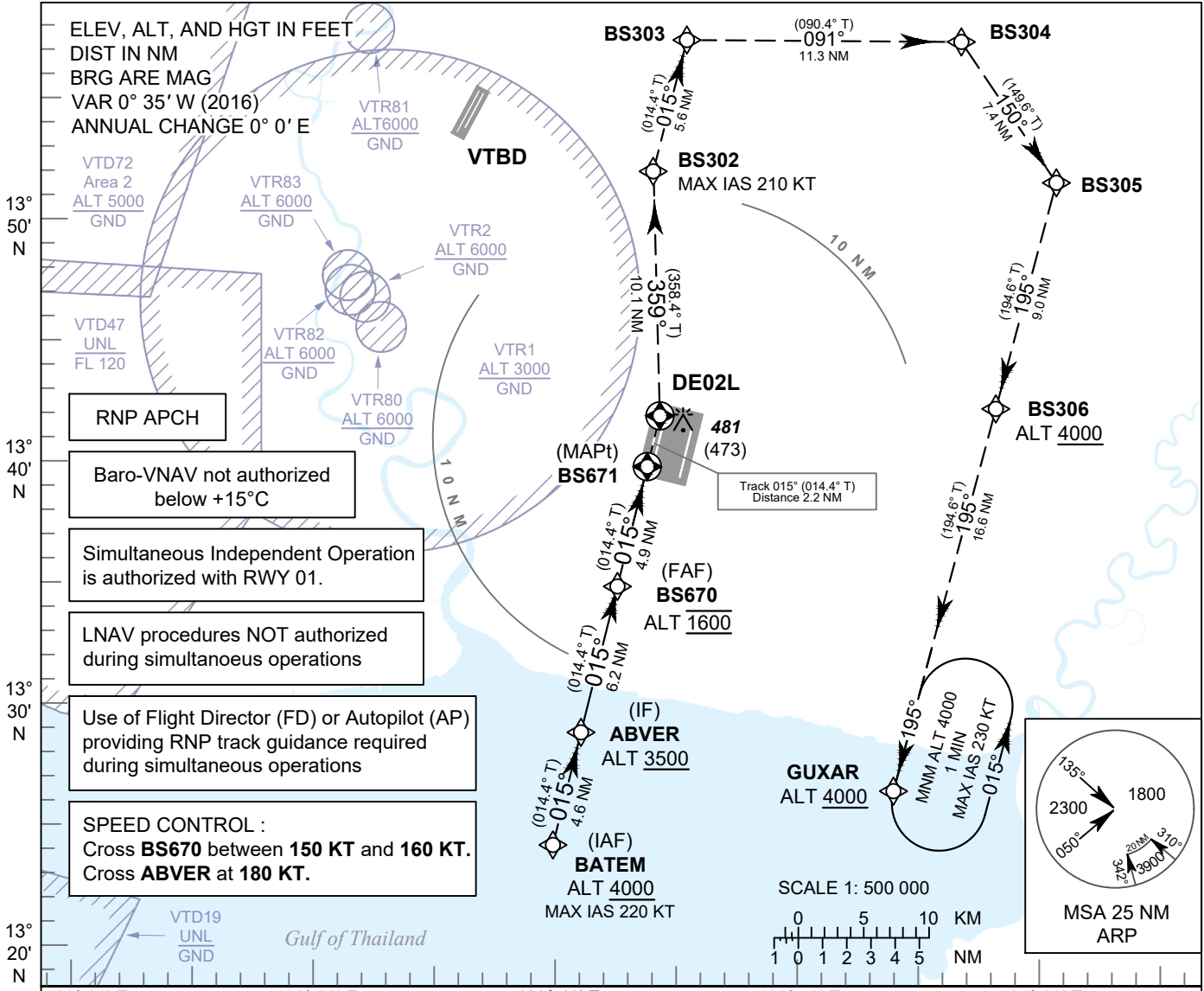


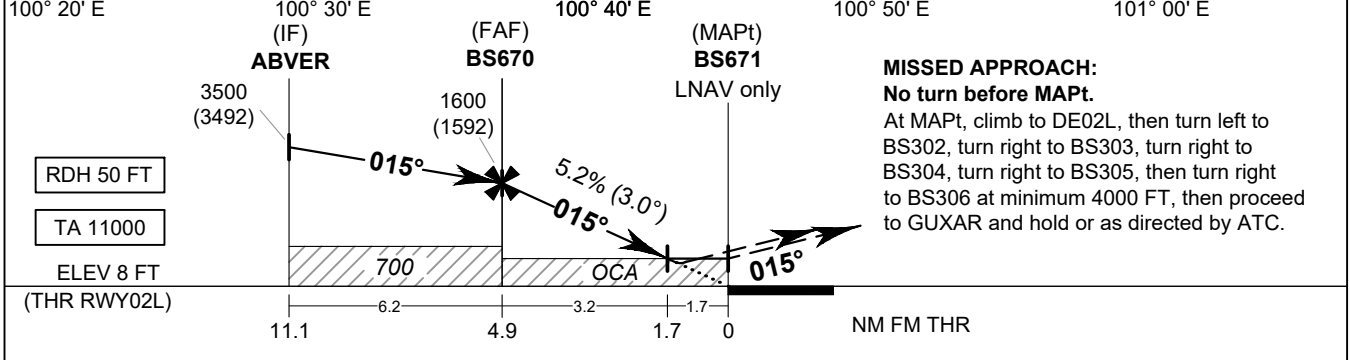
INSTRUMENT APPROACH CHART - ICAO **AERODROME ELEV 8 FT**
 HEIGHTS RELATED TO
 THR RWY02L - ELEV 8 FT

APP	: 119.1, 262.5
	: 120.3, 262.5
	: 133.4, 262.5
	: 122.35, 262.5
	: 124.35, 262.5
	: 125.2, 262.5
ARR	: 121.1, 262.5
	: 126.3, 262.5
TWR	: 118.2, 274.5
	: 119.0
ARR ATIS	: 133.6, 278.6

BANGKOK / Suvarnabhumi Intl (VTBS)
RNP RWY02L



- RNP APCH
- Baro-VNAV not authorized below +15°C
- Simultaneous Independent Operation is authorized with RWY 01.
- LNAV procedures NOT authorized during simultaneous operations
- Use of Flight Director (FD) or Autopilot (AP) providing RNP track guidance required during simultaneous operations
- SPEED CONTROL :
 Cross **BS670** between **150 KT** and **160 KT**.
 Cross **ABVER** at **180 KT**.



OCA/H	A	B	C	D	NM to NEXT WPT	FAF	4 NM	3 NM	2 NM	1.7 NM
LNAV / VNAV	540 (532)				Altitude (Height)	1600 (1592)	1320 (1312)	1005 (997)	690 (682)	600 (592)
LNAV	600 (592)				Ground speed	knot	70	90	100	120
Circling (OCH AAL)	800 (792)		900 (892)		Rate of descent FAF-MAPT 5.2%	ft/min	369	474	527	632

CHANGE: NEW CHART.