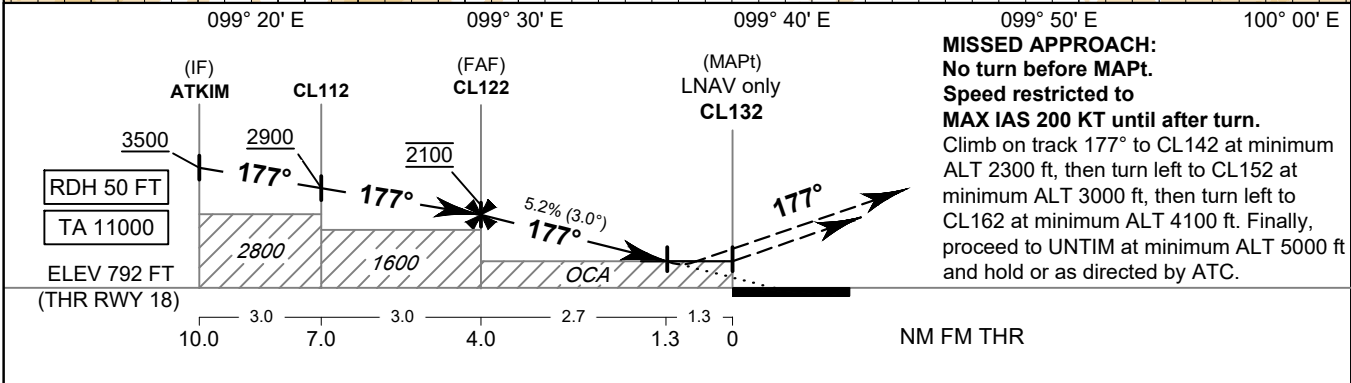
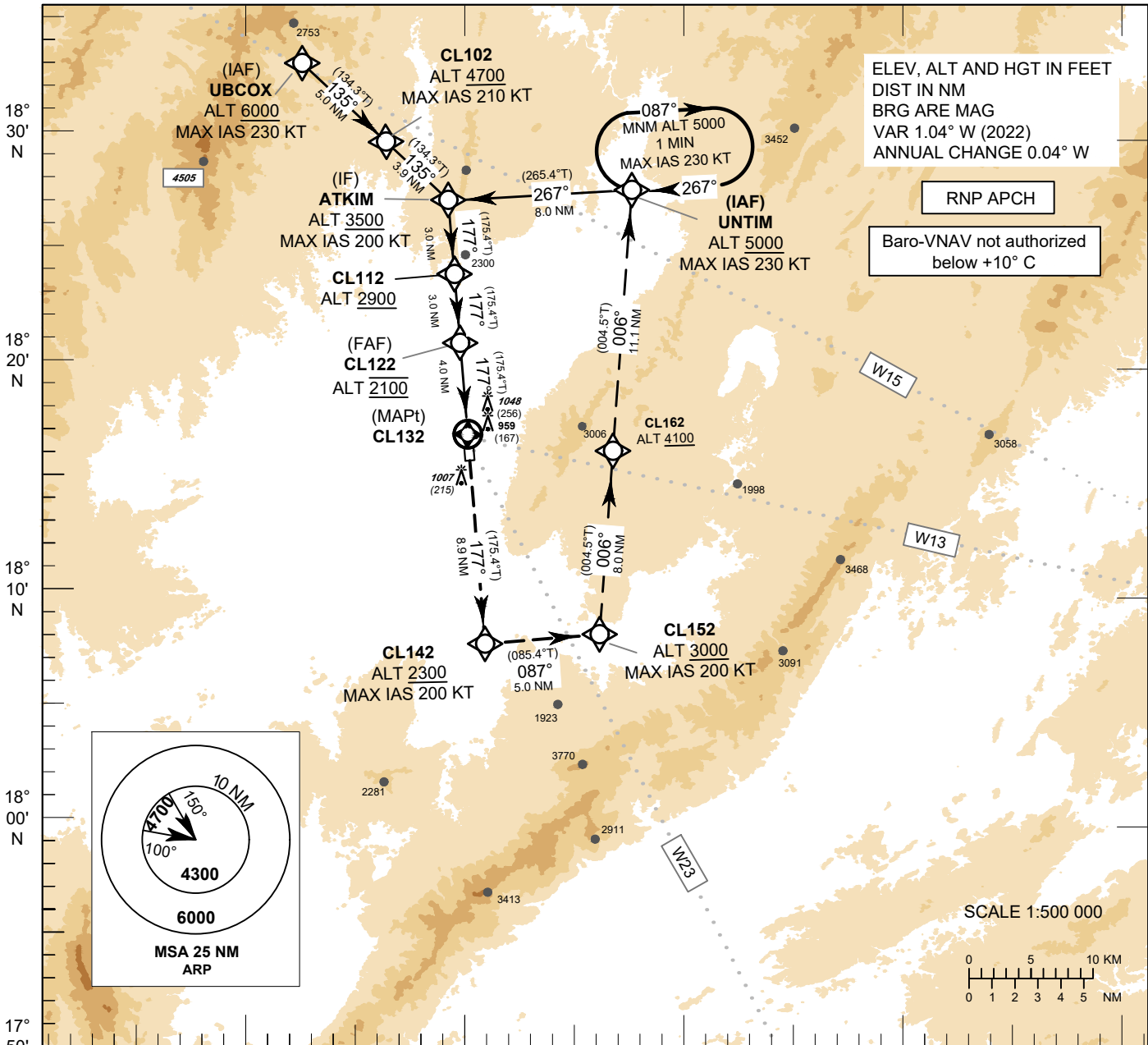


INSTRUMENT
APPROACH
CHART - ICAO

AERODROME ELEV 815 FT
HEIGHTS RELATED TO
THR RWY 18 ELEV 792 FT

APP : 119.3 MHz
TWR : 122.3, 236.6 MHz
ATIS : 395 kHz

LAMPANG / Lampang (VTCL)
RNP RWY18



MISSED APPROACH:
No turn before MAPt.
Speed restricted to
MAX IAS 200 KT until after turn.
Climb on track 177° to CL142 at minimum
ALT 2300 ft, then turn left to CL152 at
minimum ALT 3000 ft, then turn left to
CL162 at minimum ALT 4100 ft. Finally,
proceed to UNTIM at minimum ALT 5000 ft
and hold or as directed by ATC.

OCA/H	A	B	C	D	NM to NEXT WPT	FAF		3NM		2NM		1.3NM	
LNAV/VNAV	1250 (458)				Altitude (Height)	2100 (1308)		1790 (998)		1475 (683)		1250 (685)	
LNAV					Ground speed		knot	70	90	100	120	140	160
Circling* (OCH AAL)	1500 (685)				Rate of descent FAF-MAPT 5.2%	ft/min	369	474	527	632	737	843	
* FOR CIRCLING RESTRICTIONS SEE VERSO.													