

**STANDARD DEPARTURE CHART-
INSTRUMENT (SID) - ICAO**

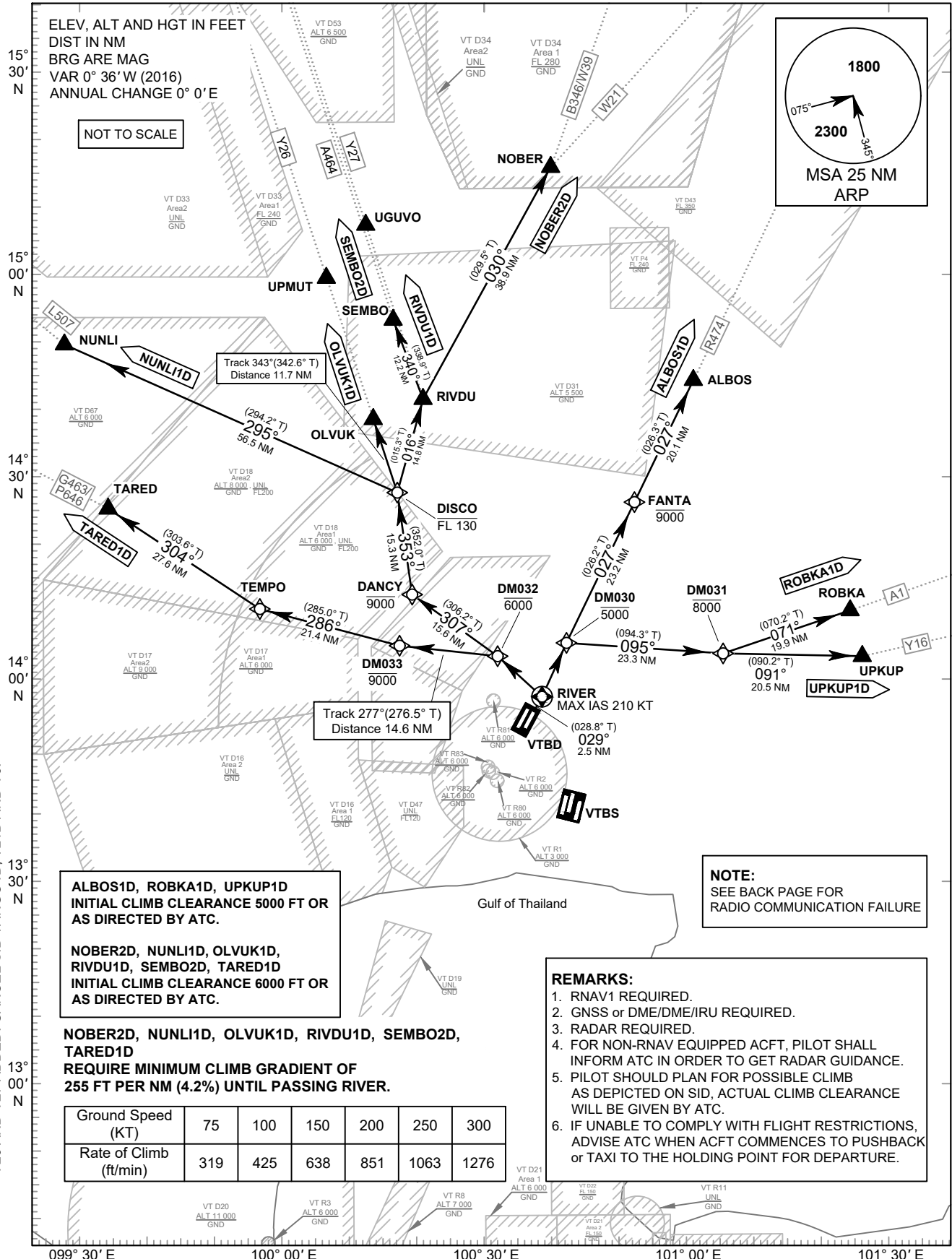
TRANSITION ALTITUDE
11000 FT

SPEED RESTRICTION
MAX IAS 250 KT AT OR
BELOW ALT 10000 FT
UNLESS OTHERWISE
AUTHORIZED BY ATC.

APP : 119.1, 262.5
: 119.4, 262.5
: 120.3, 262.5
: 133.4, 262.5
: 122.35, 262.5
: 124.35, 262.5
: 125.2, 262.5
DAR : 133.0, 262.5
TWR : 118.1, 236.6
DEP ATIS : 118.55

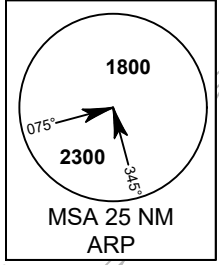
**BANGKOK/Don Mueang Intl (VTBD)
RNAV RWY03R**

ALBOS1D NOBER2D NUNLI1D
OLVUK1D RIVDU1D ROBKA1D
SEMBO2D TARED1D UPKUP1D



ELEV, ALT AND HGT IN FEET
DIST IN NM
BRG ARE MAG
VAR 0° 36' W (2016)
ANNUAL CHANGE 0° 0' E

NOT TO SCALE



ALBOS1D, ROBKA1D, UPKUP1D
INITIAL CLIMB CLEARANCE 5000 FT OR
AS DIRECTED BY ATC.

NOBER2D, NUNLI1D, OLVUK1D,
RIVDU1D, SEMBO2D, TARED1D
INITIAL CLIMB CLEARANCE 6000 FT OR
AS DIRECTED BY ATC.

NOBER2D, NUNLI1D, OLVUK1D, RIVDU1D, SEMBO2D,
TARED1D
REQUIRE MINIMUM CLIMB GRADIENT OF
255 FT PER NM (4.2%) UNTIL PASSING RIVER.

Ground Speed (KT)	75	100	150	200	250	300
Rate of Climb (ft/min)	319	425	638	851	1063	1276

NOTE:
SEE BACK PAGE FOR
RADIO COMMUNICATION FAILURE

REMARKS:

1. RNAV1 REQUIRED.
2. GNSS or DME/DME/IRU REQUIRED.
3. RADAR REQUIRED.
4. FOR NON-RNAV EQUIPPED ACFT, PILOT SHALL INFORM ATC IN ORDER TO GET RADAR GUIDANCE.
5. PILOT SHOULD PLAN FOR POSSIBLE CLIMB AS DEPICTED ON SID, ACTUAL CLIMB CLEARANCE WILL BE GIVEN BY ATC.
6. IF UNABLE TO COMPLY WITH FLIGHT RESTRICTIONS, ADVISE ATC WHEN ACFT COMMENCES TO PUSHBACK or TAXI TO THE HOLDING POINT FOR DEPARTURE.

CHANGE : CHART TITLE, REVISED SID NOBER2D AND SEMBO2D, SID OLVUK1D AND RIVDU1D ADDED.
Y26 AND Y27 ADDED. CANCEL SID TANGO1D, TL1D AND Y6.