

STANDARD ARRIVAL CHART - INSTRUMENT (STAR) - ICAO

TRANSITION ALTITUDE
11000 FT

APP : 123.35 , 240.0
TWR : 122.7 , 274.5
GND : 121.9 , 275.8
ATIS : 125.95

SURAT THANI / Surat Thani (VTSB)

RNAV RWY04

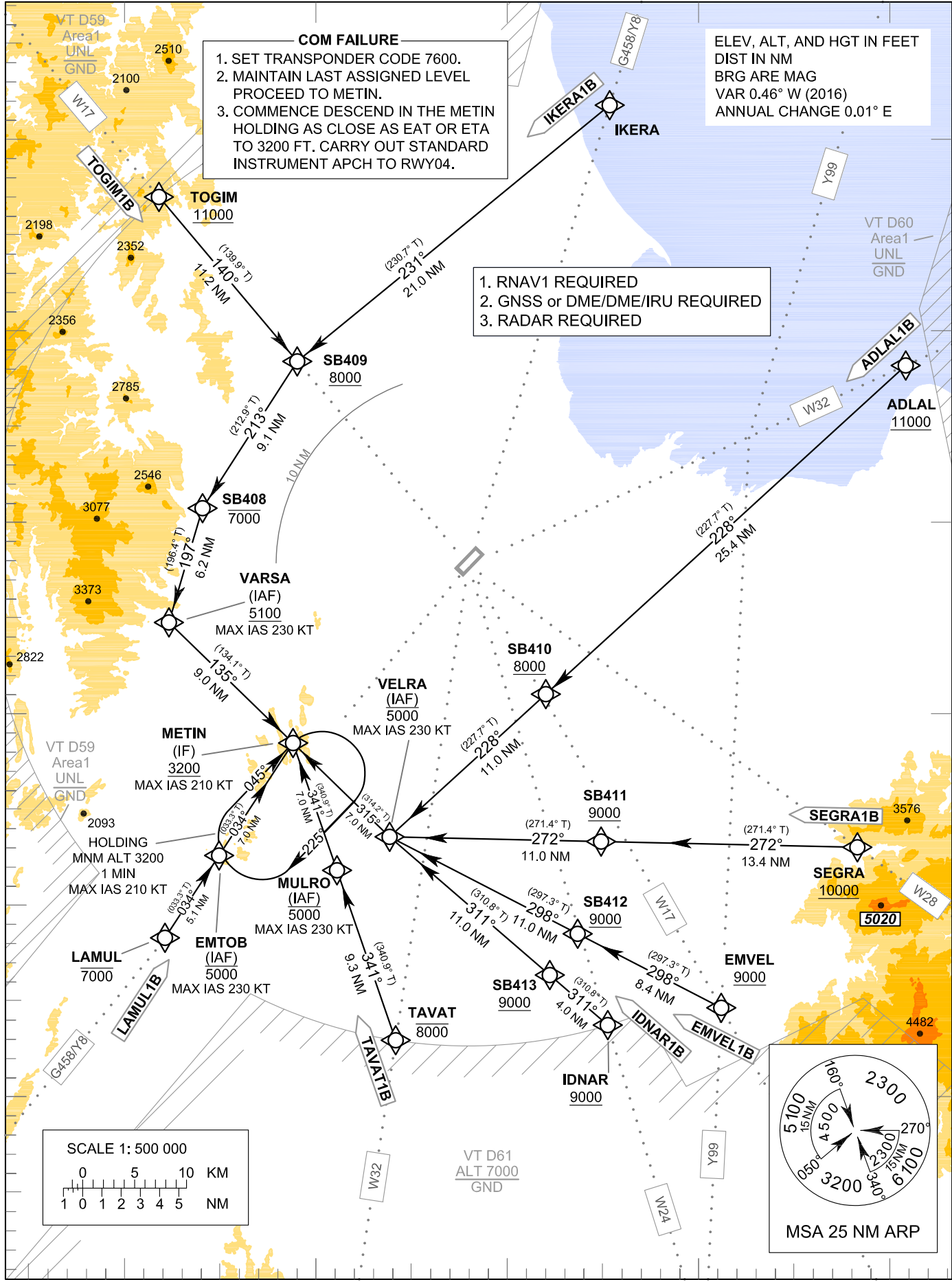
ADLAL1B EMVEL1B IDNAR1B IKERA1B

LAMUL1B SEGRA1B TAVAT1B TOGIM1B

ELEV, ALT, AND HGT IN FEET
DIST IN NM
BRG ARE MAG
VAR 0.46° W (2016)
ANNUAL CHANGE 0.01° E

COM FAILURE
1. SET TRANSPONDER CODE 7600.
2. MAINTAIN LAST ASSIGNED LEVEL
PROCEED TO METIN.
3. COMMENCE DESCEND IN THE METIN
HOLDING AS CLOSE AS EAT OR ETA
TO 3200 FT. CARRY OUT STANDARD
INSTRUMENT APCH TO RWY04.

1. RNAV1 REQUIRED
2. GNSS or DME/DME/IRU REQUIRED
3. RADAR REQUIRED



CHANGE: NEW CHART.