

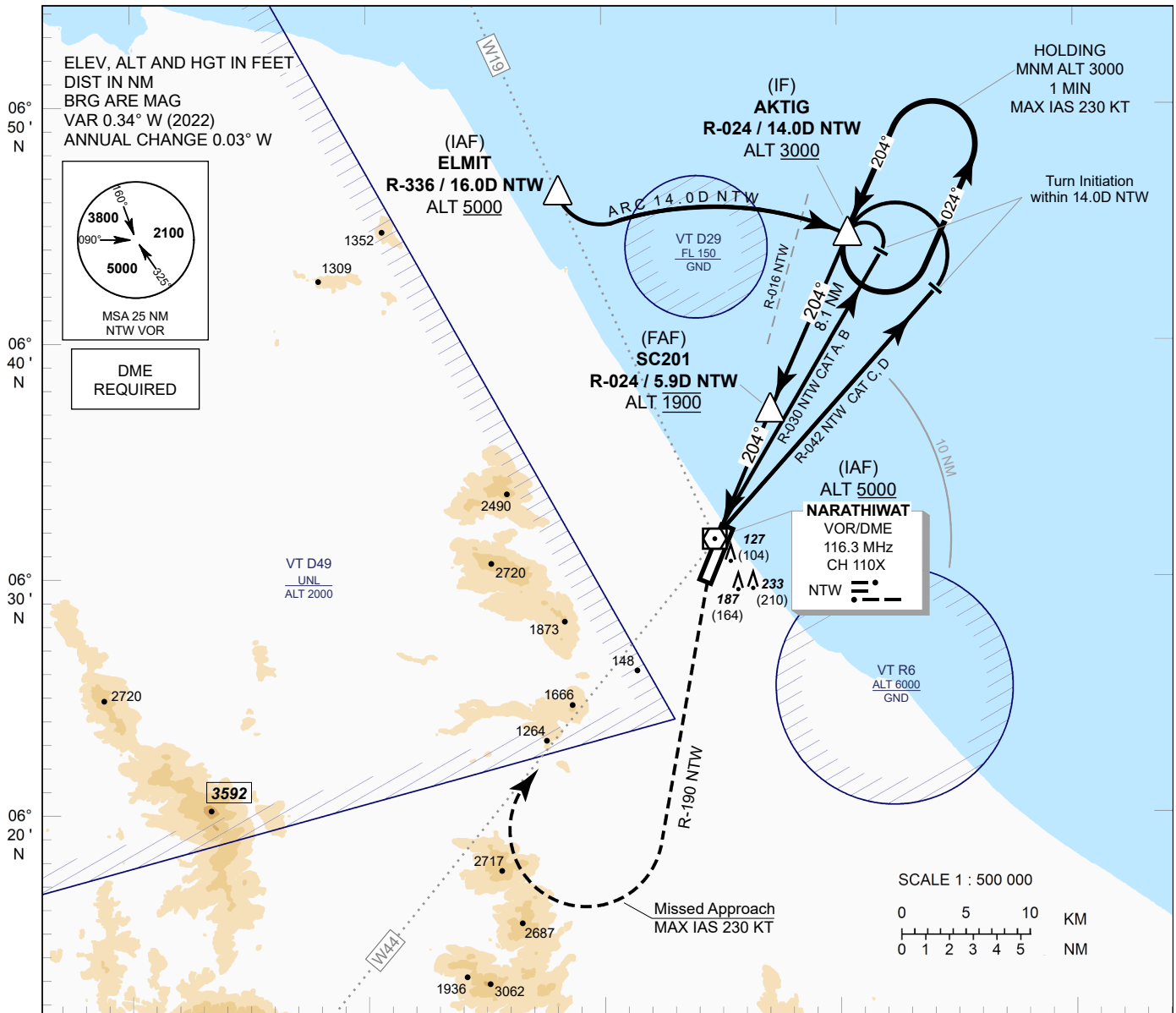
**INSTRUMENT APPROACH CHART - ICAO**

**AERODROME ELEV 23 FT**  
**HEIGHTS RELATED TO AERODROME ELEV**

APP : 125.55 MHz  
 TWR : 122.7, 236.6 MHz  
 GND : 121.9 MHz  
 ATIS : 383.0 kHz

**NARATHIWAT / Narathiwat (VTSC)**

**VOR RWY20**



**MISSED APPROACH:**  
 No turn before MAPt.  
 Speed restricted to **MAX IAS 230 KT until after turn.**  
 At MAPt, Climb and turn left to intercept outbound R-190 NTW VOR to 2100 FT, then turn right to intercept outbound R-024 NTW VOR and proceed to AKTIG at minimum 3000 FT and hold or as directed by ATC.

(MAPt) **SC202** (FAF) **SC201** (IF) **AKTIG**

1900 (1877) 3000 (2977)

VOR/DME NTW

190°

204°

5.2% (3.0°)

OCA 500

TA 11000

ELEV 23 FT (THR RWY 20)

DME FM VOR 0 0.1 1.3 5.9 14.0  
 NM FM THR 0 1.2 5.8 13.9

CHANGE : REVISED CHART.

OCA/H	A	B	C	D	Distance (NTW)	1.3D	2D	3D	4D	5D	FAF		
Straight - in Approach	450 (427)				Altitude (Height)	450 (427)	675 (652)	990 (967)	1305 (1282)	1620 (1597)	1900 (1877)		
					Ground Speed	knot	70	90	100	120	140	160	
Circling (OCH AAL)	900 (877)				Rate of Decent	5.2%	ft/min	369	474	527	632	737	843