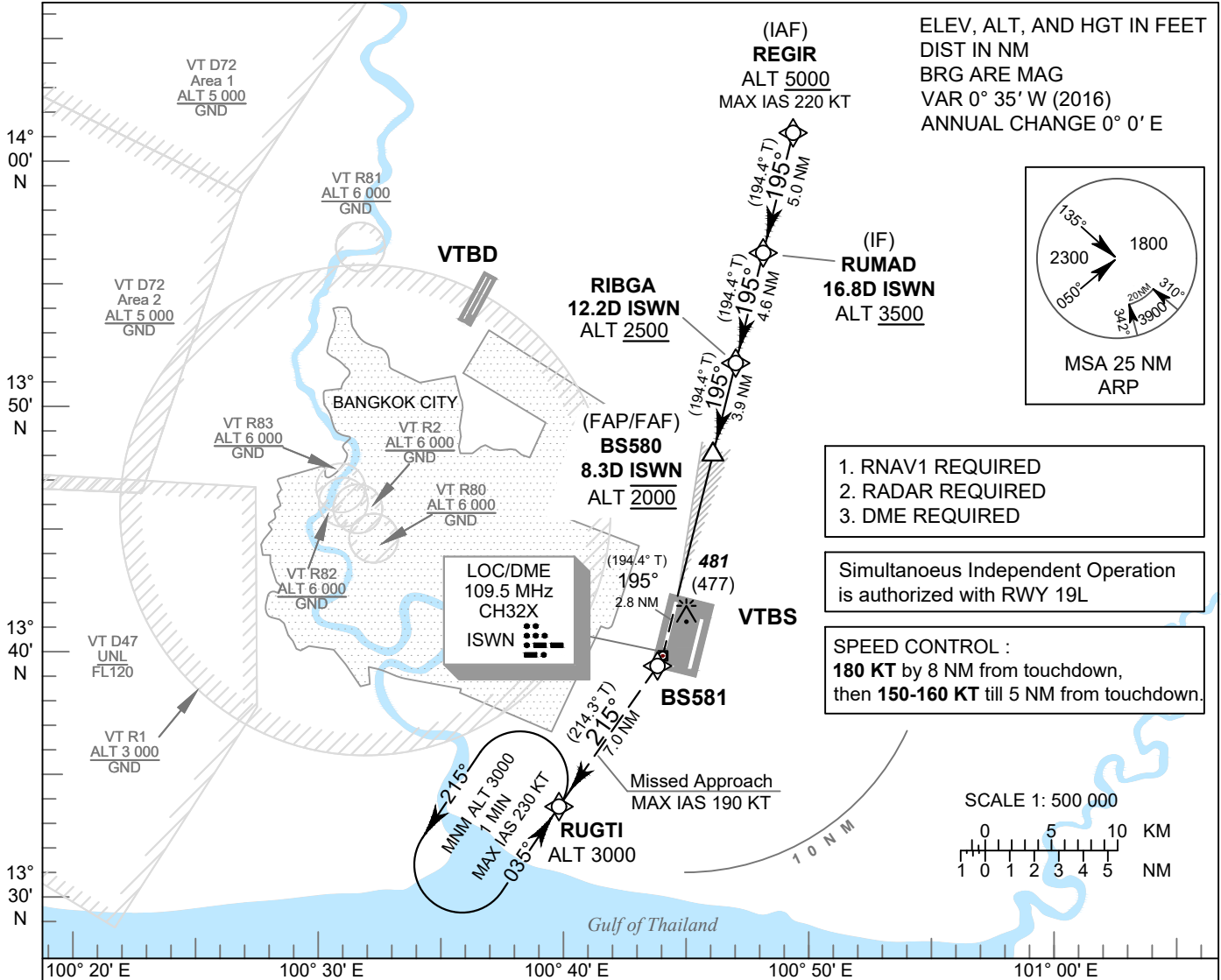


INSTRUMENT APPROACH CHART - ICAO **AERODROME ELEV 4 FT**
 HEIGHTS RELATED TO
 THR RWY19R - ELEV 4 FT

APP	: 119.1, 262.5
	: 120.3, 262.5
	: 133.4, 262.5
	: 122.35, 262.5
	: 124.35, 262.5
	: 125.2, 262.5
ARR	: 121.1, 262.5
	: 126.3, 262.5
TWR	: 118.2, 274.5
	: 119.0
ARR ATIS	: 133.6, 278.6

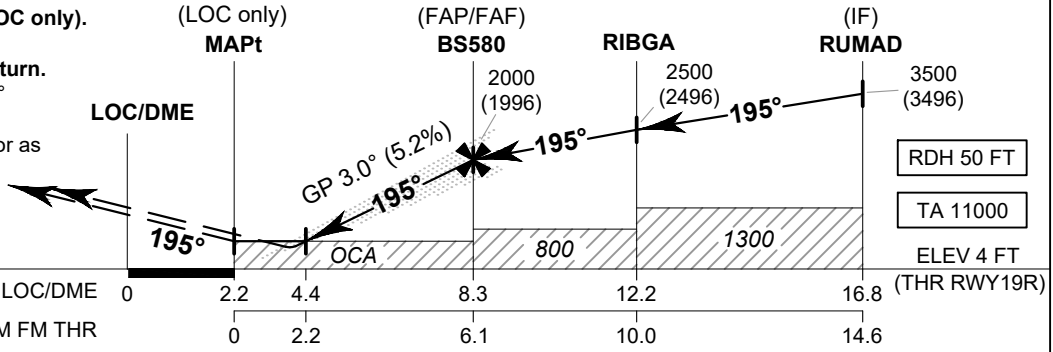
BANGKOK / Suvarnabhumi Intl (VTBS)

ILS or LOC z RWY19R
CAT II



MISSED APPROACH:

No turn before MAPt (for LOC only).
Speed restricted to MAX IAS 190 KT until after turn.
 Climb to BS581 on track 195° then climbing right turn to RUGTI at 3000 FT and hold or as directed by ATC.
 (If unable to reach 3000 FT at RUGTI, continue climb in the holding pattern.)



CHANGE: CORRECTED BS581 SYMBOL.

OCA/H		A	B	C	D	GS OUT	Distance (ISWN)	4.4 D	5 D	6 D	7 D	8 D	FAF	
Straight-in Approach	CAT I	290 (286)						750	940	1255	1570	1890	2000	
	CAT II	220 (216)					(746)	(936)	(1251)	(1566)	(1886)	(1996)		
LOC only		750 (746)					Ground speed	knot	70	90	100	120	140	160
Circling (OCH AAL)		800 (796)	900 (896)				Rate of descent (5.2%)	ft/min	369	474	527	632	737	843