

**AIRCRAFT PARKING/
DOCKING CHART - ICAO**

**APRON ELEV
590 FT**

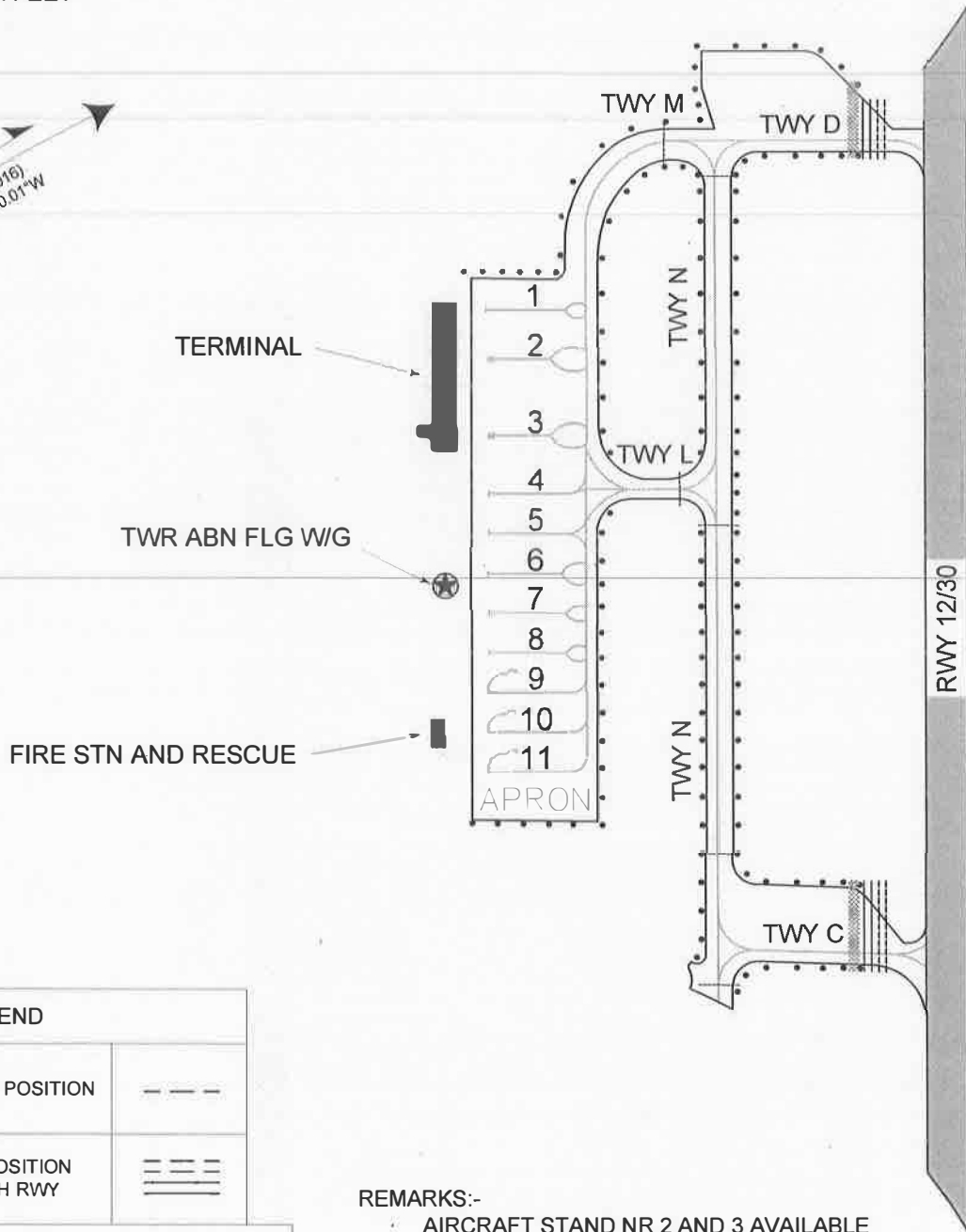
TWR 122.5, 355.4

GND 121.9, 275.8

UDON THANI / Udon Thani

ELEVATIONS IN FEET

MAG VAR 0.87°W (2016)
ANNUAL CHANGE 0.01°W



LEGEND

INTERMEDIATE HOLDING POSITION



RUNWAY - HOLDING POSITION
NON-PRECISION APCH RWY



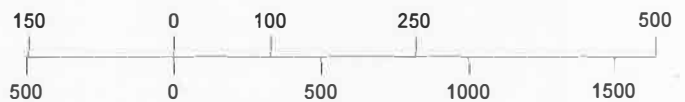
INS COORDINATES FOR AIRCRAFT STANDS

STAND NR	COORDINATES	
1	17 23 15.91N	102 46 30.19E
2	17 23 15.19N	102 46 31.87E
3	17 23 13.95N	102 46 34.44E
4	17 23 12.98N	102 46 36.41E
5	17 23 12.32N	102 46 37.74E
6	17 23 11.67N	102 46 39.07E
7	17 23 11.02N	102 46 40.39E
8	17 23 10.37N	102 46 41.72E
9	17 23 09.72N	102 46 43.05E
10	17 23 09.07N	102 46 44.37E
11	17 23 08.42N	102 46 45.70E

REMARKS:-

- AIRCRAFT STAND NR 2 AND 3 AVAILABLE WITH AVIATION BRIDGES
- TAXIWAY WIDTH 23 m.
- APRON PCN 61/R/C/X/T
- TAXIWAY A - TAXIWAY N PCN 61/R/C/X/T
- DETAILS OF HOT SPOTS ARE SHOWN IN AERODROME GROUND MOVEMENT CHART

METRES



FEET

CHANGE: APRON ELEV. and INS COORDINATES FOR AIRCRAFT STANDS (4, 5, 6, 7, 8, 10 and 11).