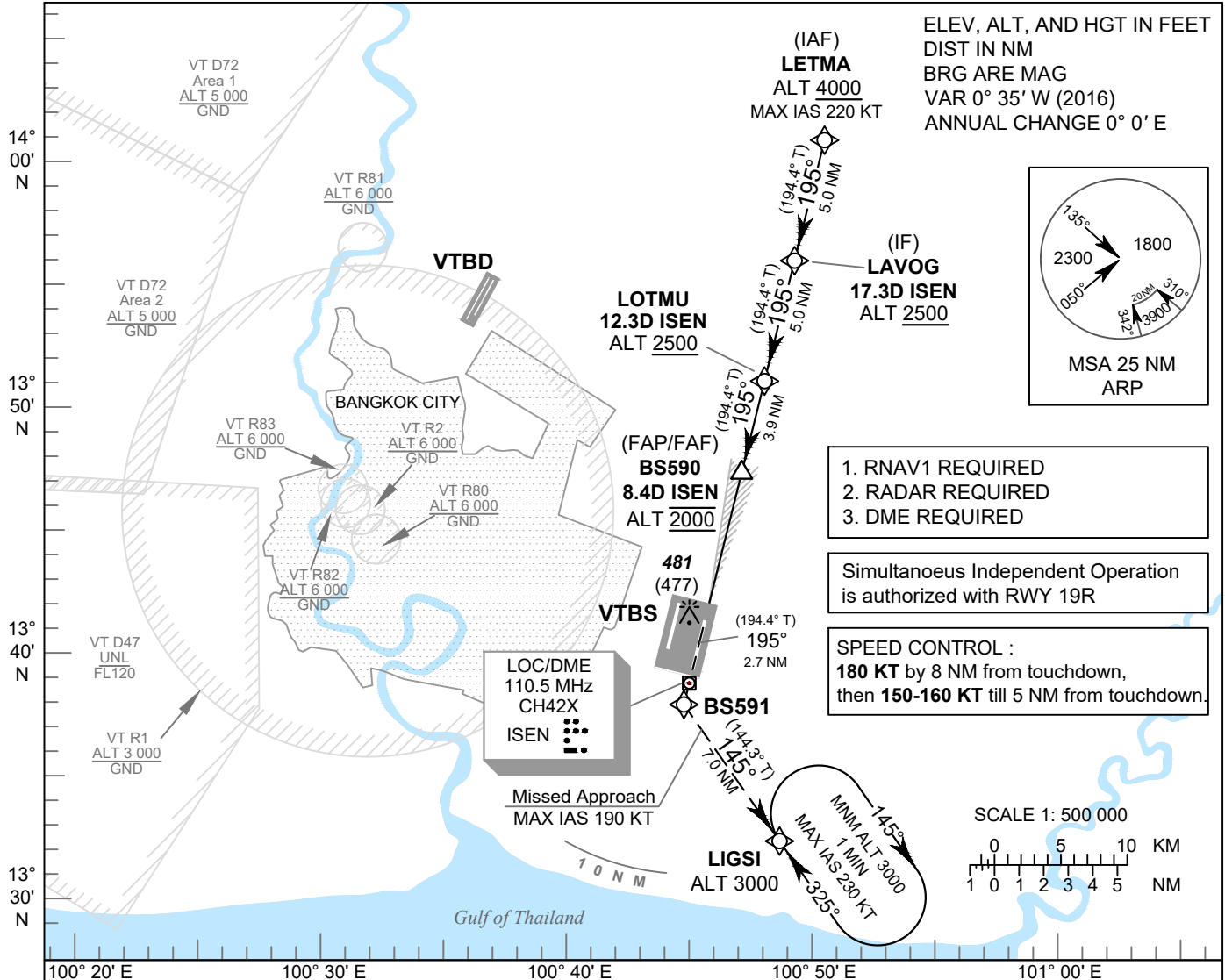


**INSTRUMENT APPROACH CHART - ICAO**      **AERODROME ELEV 4 FT**  
**HEIGHTS RELATED TO THR RWY19L - ELEV 4 FT**

APP	: 119.1, 262.5
	: 120.3, 262.5
	: 133.4, 262.5
	: 122.35, 262.5
	: 124.35, 262.5
	: 125.2, 262.5
ARR	: 121.1, 262.5
	: 126.3, 262.5
TWR	: 118.2, 274.5
	: 119.0
ARR ATIS	: 133.6, 278.6

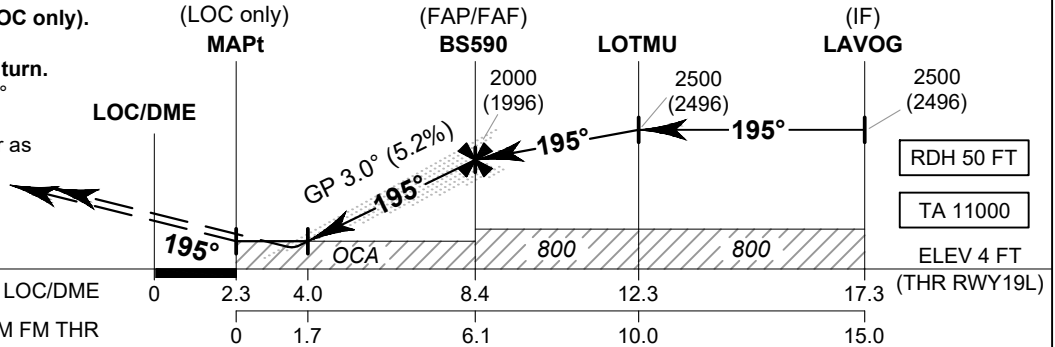
**BANGKOK / Suvarnabhumi Intl (VTBS)**

**ILS or LOC z RWY19L**  
**CAT II**



**MISSED APPROACH:**

**No turn before MAPt (for LOC only).**  
**Speed restricted to MAX IAS 190 KT until after turn.**  
Climb to BS591 on track 195° then climbing left to LIGSI at 3000 FT and hold or as directed by ATC.  
(If unable to reach 3000 FT at LIGSI, continue climb in the holding pattern.)



CHANGE: REVISED CHART.

OCA/H		A	B	C	D	GS OUT	Distance (ISEN)	4 D	5 D	6 D	7 D	8 D	FAF
Straight-in Approach	CAT I	250 (246)					Distance (ISEN)	4 D	5 D	6 D	7 D	8 D	FAF
	CAT II	140 (136)				Altitude (Height)		590 (586)	910 (906)	1225 (1221)	1540 (1536)	1855 (1851)	2000 (1996)
LOC only		590 (586)				Ground speed	knot	70	90	100	120	140	160
Circling (OCH AAL)		800 (796)		900 (896)		Rate of descent (5.2%)	ft/min	369	474	527	632	737	843