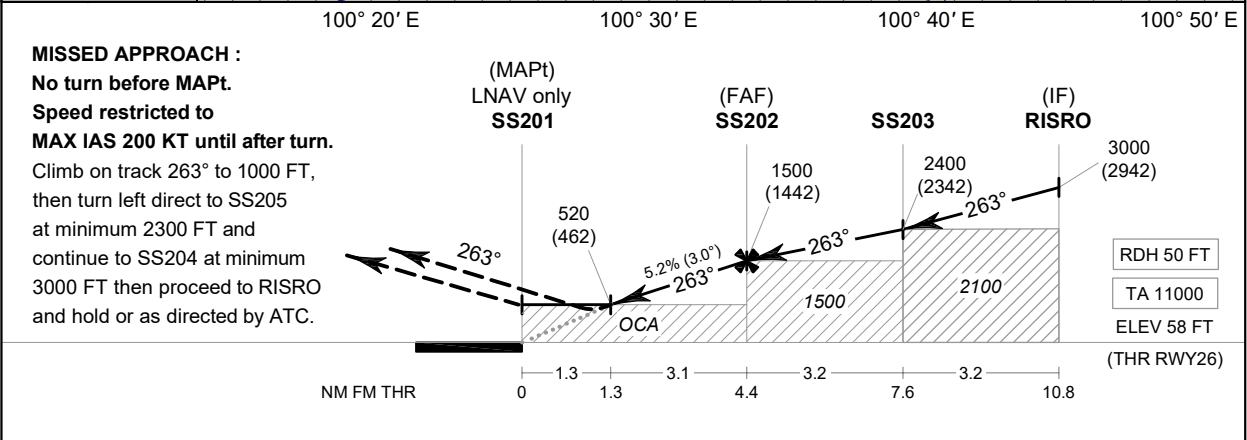
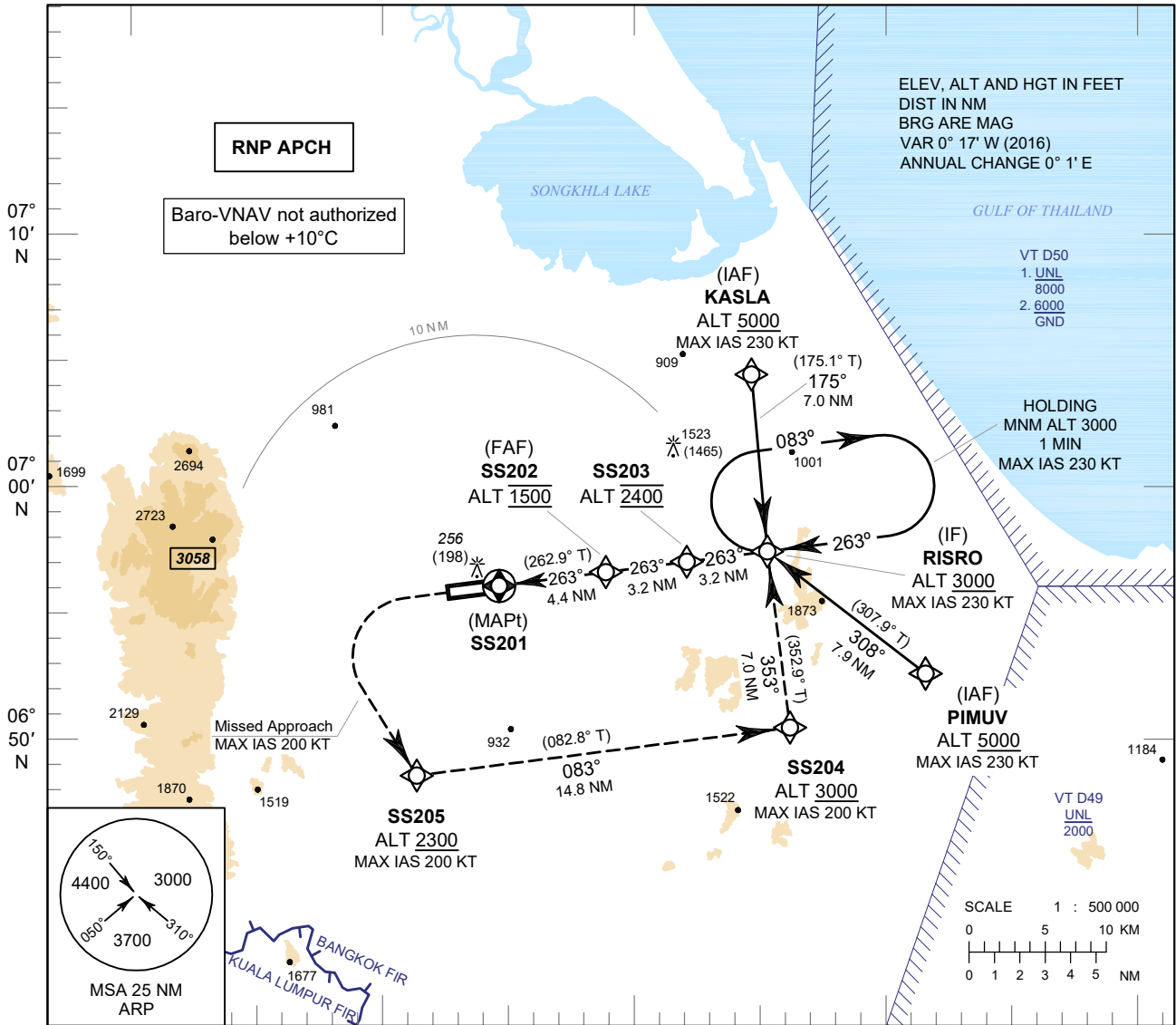


**INSTRUMENT**      **AERODROME ELEV 90 FT**  
**APPROACH**        HEIGHTS RELATED TO  
**CHART - ICAO**     THR RWY26 - ELEV 58 FT

APP : 126.7, 301.5  
TWR : 118.1, 275.8  
GND : 121.9, 257.8  
ATIS : 128.8

**SONGKHLA / Hat Yai Intl (VTSS)**

**RNP RWY26**



OCA/H	A	B	C	D	NM to NEXT WPT	1.3 NM	2 NM	3 NM	4 NM	FAF
LNAV/VNAV	420 (362)				Altitude (Height)	520 (462)	740 (682)	1055 (997)	1370 (1312)	1500 (1442)
LNAV	520 (462)				Ground Speed	knot	70	90	100	120
Circling (OCH AAL)	900 (810)		1500 (1410)		Rate of Descent	5.2%	369	474	527	632

CHANGE : REVISED CHART.